

Clerk

UNDER THE ILLINOIS HIGHWAY CODE

BE IT RESOLVED, by the \_\_\_\_\_ Council  
 Council or President and Board of Trustees  
 City \_\_\_\_\_ of Urbana \_\_\_\_\_, Illinois

that the following described street(s) be improved under the Illinois Highway Code:

Name of Thoroughfare	Route	From	To
1. Busey Avenue		Main	Clark
2. Cole Place		Eastern	Philo
3. Cottage Grove Avenue		Pennsylvania	Florida
4. Delaware Avenue		Cottage Grove	Linden
5. Eastern Drive		Cole Place	Fairlawn
6. Elm Street		Busey	Cedar
7. Mumford Drive		West of Zuppke	Anderson
8. Nevada Avenue		Mathews	Lincoln
9. Oregon Avenue		Mathews	Goodwin

BE IT FURTHER RESOLVED,

- That the proposed improvement consist of Storm sewer construction on Elm between Birch and Cedar, combination concrete curb and gutter removal and replacement, bituminous concrete surface course or plasticized bitumen hot mix seal on various streets, and other related work, and shall be designated as Section 82-00228-00-RS.
- That there is hereby appropriated the sum of one hundred eighty thousand and no hundredths Dollars (\$180,000.00) for the improvement of said section from the municipality's allotment of Motor Fuel Tax funds.
- That said work shall be done by Contract (Specify Contract or Day Labor); and,

BE IT FURTHER RESOLVED, that the Clerk is hereby directed to transmit two certified copies of this resolution to the district/regional office of the Department of Transportation.

APPROVED

6-10 1982  
 Department of Transportation

Robert E. Kromt  
 District \_\_\_\_\_ Engineer

I,      Ruth S. Brookens \_\_\_\_\_ City Clerk  
 Mrs. \_\_\_\_\_ (City, Town, or Village)

in and for the \_\_\_\_\_ City \_\_\_\_\_ of Urbana  
 (City, Town, or Village)

County of Champaign, hereby certify the foregoing to be a true, perfect and complete copy of a resolution adopted by the \_\_\_\_\_

Council CITY OF \_\_\_\_\_ at a meeting on  
 (Council or President and Board of Trustees)  
May 3 1982

IN TESTIMONY WHEREOF, I have hereunto set my hand and seal this  
10th day of May, A.D. 1982.

(SEAL) Ruth S. Brookens  
 City Clerk.  
 (City, Town, or Village)

## ESTIMATE OF COST

(Rd. Dist.)

Municipality Urbana

Page 1 of 2

Section 82-00228-00-RS

Location (Sta. and land description of beginning; Sta. only for end for county and road district; street limits for municipality.)  
Busey: Main-Clark, Cole: Eastern-Philo, Cottage Grove: Pennsylvania-Florida, Delaware: Cottage  
Grove-Linden, Eastern: Cole-Fairlawn, Elm: Busey-Cedar, Mumford: West of Zuppke-Anderson,  
Neyada: Mathews-Lincoln, and Oregon: Mathews-Goodwin,

a total distance of 7.454 feet, of which 7.454 feet (1.41 miles) are to be improved.

Station \_\_\_\_\_ is approximately \_\_\_\_\_ miles by road from the \_\_\_\_\_  
 railroad siding at \_\_\_\_\_

Type Resurfacing and Sewer Const. Width Variable Thickness Variable Shoulders \_\_\_\_\_

Average Length of Haul \_\_\_\_\_

QUANTITY	UNIT	ITEM	UNIT PRICE	COST
455	C.Y.	Trench Backfill	14.25	6,483.75
8570	S.Y.	Profile Leveling	2.00	17,140.00
230	S.Y.	P.C.C. Base Course, 7"	21.00	4,830.00
1700	GAL	Bituminous Materials (Prime Coat)	1.75	2,975.00
34	TON	Aggregate (Prime Coat)	21.00	714.00
30	TON	Mixture for cracks, joints, and flangeways	100.00	3,000.00
695	TON	Leveling Binder (Machine Method)	43.00	29,885.00
4	TON	Leveling Binder (Hand Method)	105.00	420.00
25	TON	Bituminous Concrete Binder Course, 2"	50.00	1,250.00
760	TON	Bituminous Concrete Surface Course, Class I	43.00	32,680.00
535	TON	Plasticized Bitumen Hot Mix Seal	49.00	26,215.00
6	L.F.	Storm Sewers, Type 1, 8"	20.00	120.00
25	L.F.	Storm Sewers, Type 1, 12"	27.50	687.50
27	L.F.	Storm Sewers, Type 1, 15"	35.00	945.00
360	L.F.	Storm Sewers, Type 2, 15"	30.00	10,800.00
1	EACH	Manholes, Type A, 4' Diameter, Type 1 Frame, Open Lid	1500.00	1,500.00
1	EACH	Manholes, Type A, Special, 4' Diameter, Type 1 Frame, Open Lid	1050.00	1,050.00
1	EACH	Manholes, Type A, Special, 4' Diameter, With Salvaged Frame & Grate	950.00	950.00
1	EACH	Inlets, Type A, Type 3 Frame & Grate	625.00	625.00
Total Estimated Cost				

Made by RS Date 4/5/82  
 Checked by WVC Date 4/6/82

ESTIMATE OF COST

(Rd. Dist.)

Municipality Urbana

Section 82-00228-00-RS

Location (Sta. and land description of beginning; Sta. only for end for county and road district; street limits for municipality.)

a total distance of \_\_\_\_\_ feet, of which \_\_\_\_\_ feet (\_\_\_\_\_ miles) are to be improved.

Station \_\_\_\_\_ is approximately \_\_\_\_\_ miles by road from the \_\_\_\_\_

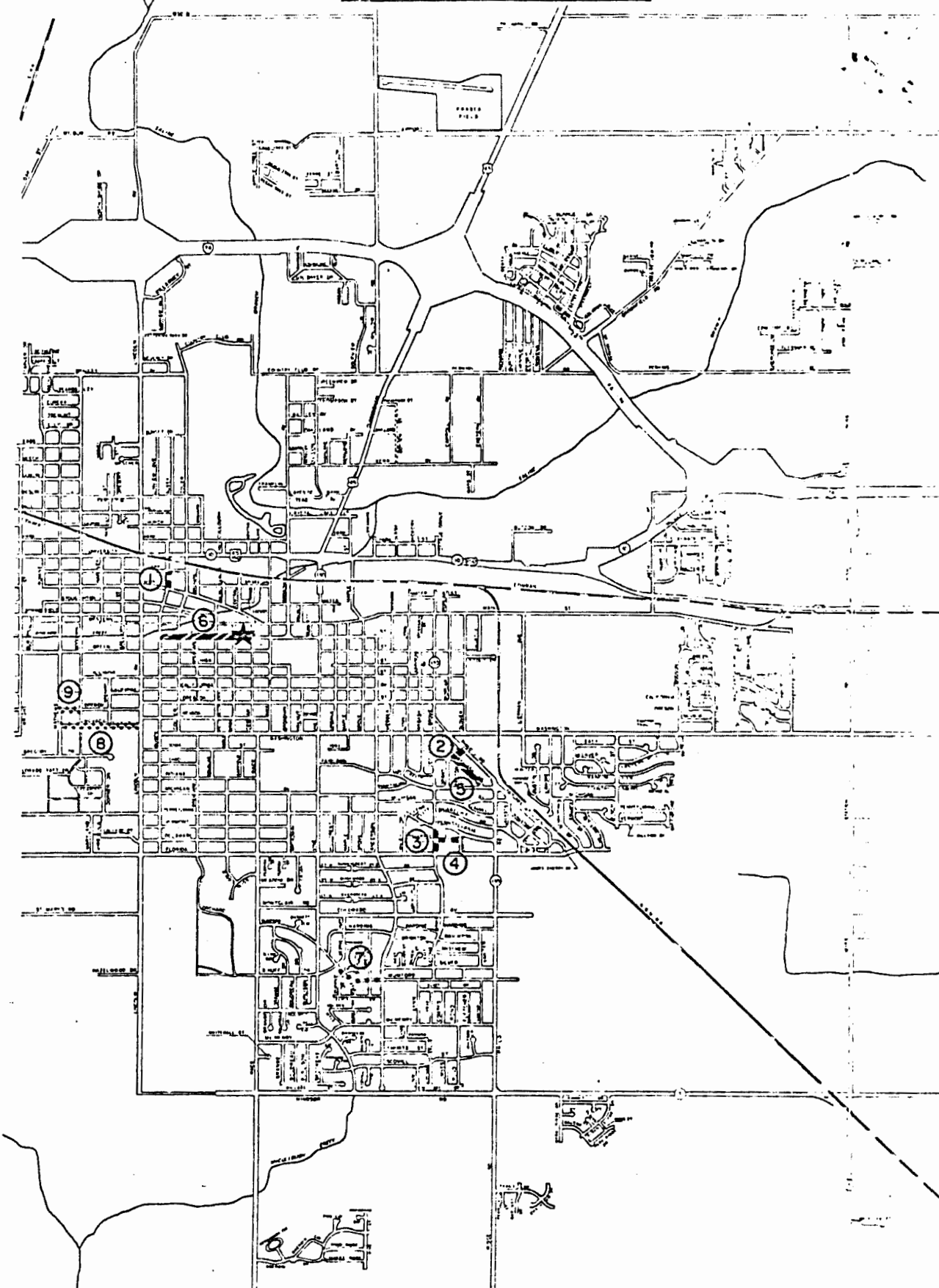
railroad siding at \_\_\_\_\_

Type \_\_\_\_\_ Width \_\_\_\_\_ Thickness \_\_\_\_\_ Shoulders \_\_\_\_\_

Average Length of Haul \_\_\_\_\_

QUANTITY	UNIT	ITEM	UNIT PRICE	COST
1	EACH	Inlets, Type B, Type 1 Frame, Open Lid	800.00	800.00
2	EACH	Filling Existing Manholes	100.00	200.00
410	L.F.	Combination Concrete Curb and Gutter Removal and Replacement	21.00	8,610.00
		Subtotal for Resurfacing		121,639.00
		Subtotal for Sewer Work		30,241.25
		Contract Subtotal		151,880.25
27,927	S.Y.	Preparation of Base (Cost Plus)	N.A.	2,800.00
1	L.S.	Proportioning Engineer's cost	4,000.00	4,000.00
52	C.Y.	Concrete for Pavement Patching (by City)	48.00	2,496.00
12	EACH	Frame and Grate Removal and Type 1 Replacement (by City)	150	1,800.00
4	EACH	Manholes to be adjusted (by City)	100	400.00
			Total Estimated Cost \$163,376.25	

Made by RS Date 4/5/82  
Checked by WWC Date 4/6/82



**PROPOSED 1982 MFT OVERLAYS & SEWER CONSTRUCTION**

.....	BITUMINOUS CONCRETE SURFACE COURSE
- - - - -	BITUMINOUS CONCRETE SURFACE WITH PROFILE LEVELING
//////	PLASTICIZED BITUMEN HOT MIX SEAL ON EXISTING BITUMINOUS CONCRETE SURFACE
	ON EXISTING OIL & CHIP SURFACE WITH CURBS
★	STORM SEWER CONSTRUCTION



PREPARED BY  
**ENGINEERING DEPARTMENT**  
 CITY OF URBANA, ILLINOIS