

ORDINANCE NO. 8889-84ORDINANCE ANNEXING CERTAIN TERRITORY
TO THE CITY OF URBANA

WHEREAS, the hereinafter described territory is situated in unincorporated territory adjacent to and contiguous to the City of Urbana, Illinois, and is part of the Eastern Prairie Fire Protection District and includes certain highways within the Urbana Township, and notice was given to the Trustees of said Fire Protection District, the Board of Township Trustees, and the Township Commissioner of Highways, said notices being mailed on May 24, 1989, that this Ordinance would be voted upon at the regular meeting of this Council on Monday, June 5, 1989, at 7:30 p.m., and the Affidavit of mailing such notices was duly recorded with the Recorder of Deeds of Champaign County, Illinois, on the 31st day of May, 1989; and

WHEREAS, a written petition signed by all of the owners of record and all electors residing therein, of all land within such territory, has been filed with the City Clerk of the City of Urbana, Illinois, requesting annexation thereof to the City of Urbana; and

WHEREAS, it has been determined that said petition complies with all requirements of the law therefore; and

WHEREAS, the majority of the members of the Council are of the opinion that it would be for the best interests of the people of the City of Urbana, Illinois, that said territory be annexed to and made a part of the said City.

THEREFORE, BE IT ORDAINED BY THE CITY COUNCIL OF THE CITY OF URBANA, ILLINOIS:

Section 1. That the following described real estate, viz:

Lot 25 of Beverly Hills in Champaign County, Illinois, encompassing 0.21 acres, more or less:

Together with the adjacent portion of W. Bradley Avenue right-of-way, encompassing 0.10 acres, more or less;

All situated in Sections 5 and 8, Township 19 North, Range 9 East of the Third Principal Meridian, Champaign County, Illinois.

commonly known for reference as 704 W. Bradley Avenue, Urbana, Illinois, be and the same is hereby annexed to the City of Urbana, Illinois. The above-described parcel, prior to annexation, has the permanent index number 30-21-05-353-016, and following annexation the said parcel shall bear the permanent index number 91-21-05-353-018.

Faint, illegible text at the top of the page, possibly a header or introductory paragraph.



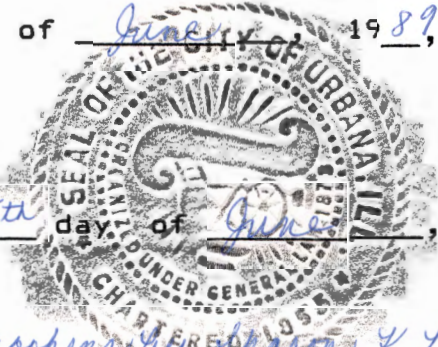
Faint, illegible text at the bottom of the page, possibly a signature block or concluding paragraph.

Section 2. That the City Clerk be authorized and directed to file, for record, a certified copy of this Ordinance together with an accurate map of the territory hereinabove described in the Office of the Recorder of Deeds for Champaign County, Illinois.

Section 3. This Ordinance shall be in full force and effect from after its passage and recording as provided by law.

This Ordinance is hereby passed by the affirmative vote, the "ayes" and "nays" being called, of a majority of the members of the Council of the City of Urbana, Illinois, at a regular meeting of said Council on the 5th day of June, 1989, A.D.

PASSED by the City Council this 5th day of June, 1989.



Ruth S. Brookens by Sharon K. Menges
Ruth S. Brookens, City Clerk Deputy Clerk

APPROVED by the Mayor this 13th day of June, 1989.
Jeffrey T. Markland
Jeffrey T. Markland, Mayor

Prepared by: Jack Waaler, Corporation Counsel
Waaler & Evans Law Offices
2503 S. Neil Street
Champaign, IL 61820

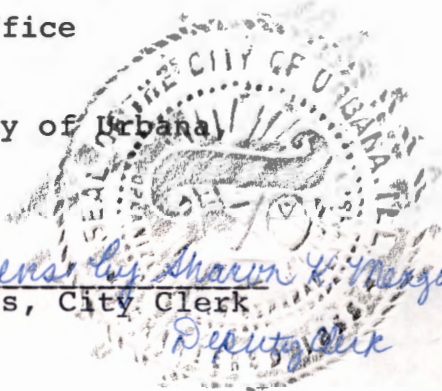
CLERK'S CERTIFICATE

STATE OF ILLINOIS)
) SS
COUNTY OF CHAMPAIGN)

I, Ruth S. Brookens, City Clerk of the City of Urbana, Illinois, and keeper of the records, files and seal of said City, do hereby certify that the foregoing is a true and exact copy of an ordinance entitled "An Ordinance Annexing Certain Territory To The City Of Urbana" adopted by the City Council of the City of Urbana, Illinois on the 5th day of June, A.D. 1989, as appears in the records and files in my office remaining.

Given under my hand and seal of said City of Urbana, Illinois, this 26th day of June, A.D. 1989.

Ruth S. Brookens
Ruth S. Brookens, City Clerk
Sharon K. Meigs
Deputy Clerk



FILED

JUN 27 1989

Dennis R. Bing
COUNTY CLERK

89R11735

INDEXED

DOC # _____
CHAMPAIGN COUNTY, ILL.

1642-0387

CLERK'S CERTIFICATE

'89 JUN 27 PM 2 12

Deanna J. Johnson

RECORDER

STATE OF ILLINOIS)
) SS
COUNTY OF CHAMPAIGN)

I, Ruth S. Brookens, City Clerk of the City of Urbana, Illinois, and keeper of the records, files and seal of said City, do hereby certify that the foregoing is a true and exact copy of an ordinance entitled "An Ordinance Annexing Certain Territory To The City Of Urbana" adopted by the City Council of the City of Urbana, Illinois on the 5th day of June, A.D. 1989, as appears in the records and files in my office remaining.

Given under my hand and seal of said City of Urbana, Illinois, this 26th day of June, A.D. 1989.

Ruth S. Brookens
Ruth S. Brookens, City Clerk
Sharon H. Margus
Deputy Clerk



THIS IS THE ATTACHMENT WHICH IS REFERRED TO IN ORDINANCE
NO. 8889-84 AND IS INCORPORATED THEREIN BY REFERENCE.

Ruth S. Brookens *by Sharon K. Meigs*
Ruth S. Brookens, City Clerk
Deputy Clerk

June 23, 1989
DATE



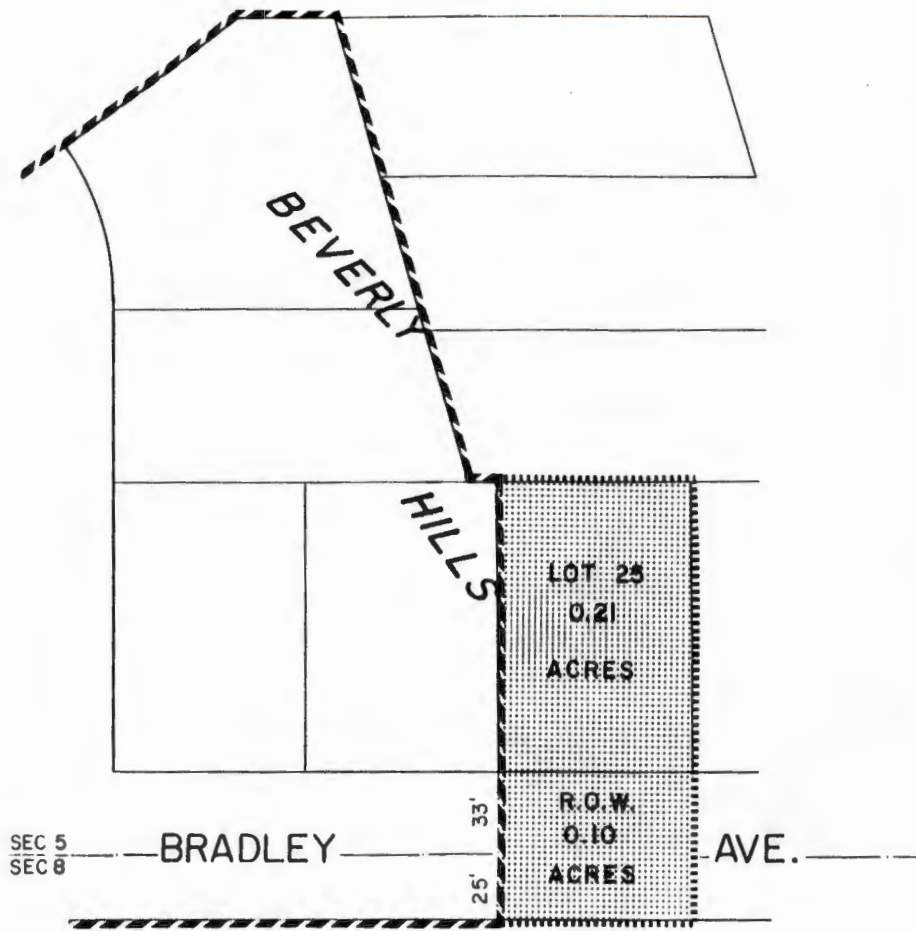
MEMORANDUM FOR THE DIRECTOR

FROM: SAC, NEW YORK (100-100000)

SUBJECT: [Illegible]

RE: [Illegible]





Lot 25 of Beverly Hills in Champaign County, Illinois, encompassing 0.21 acres, more or less;

Together with the adjacent portion of Bradley Avenue right-of-way, encompassing 0.10 acres, more or less;

All situated in Sections 5 and 8, Township 19 North, Range 9 East of the Third Principal Meridian, Champaign County, Illinois.

MAP SHOWING AREA
ANNEXED BY
CITY ORDINANCE NO. 8889-84
CITY OF URBANA, ILLINOIS
CHAMPAIGN COUNTY
DATE: JUNE 5, 1989

SCALE:
50' 25' 0 50'

AREA OF ANNEXATION [stippled pattern]

EXISTING CITY LIMITS [dashed line]

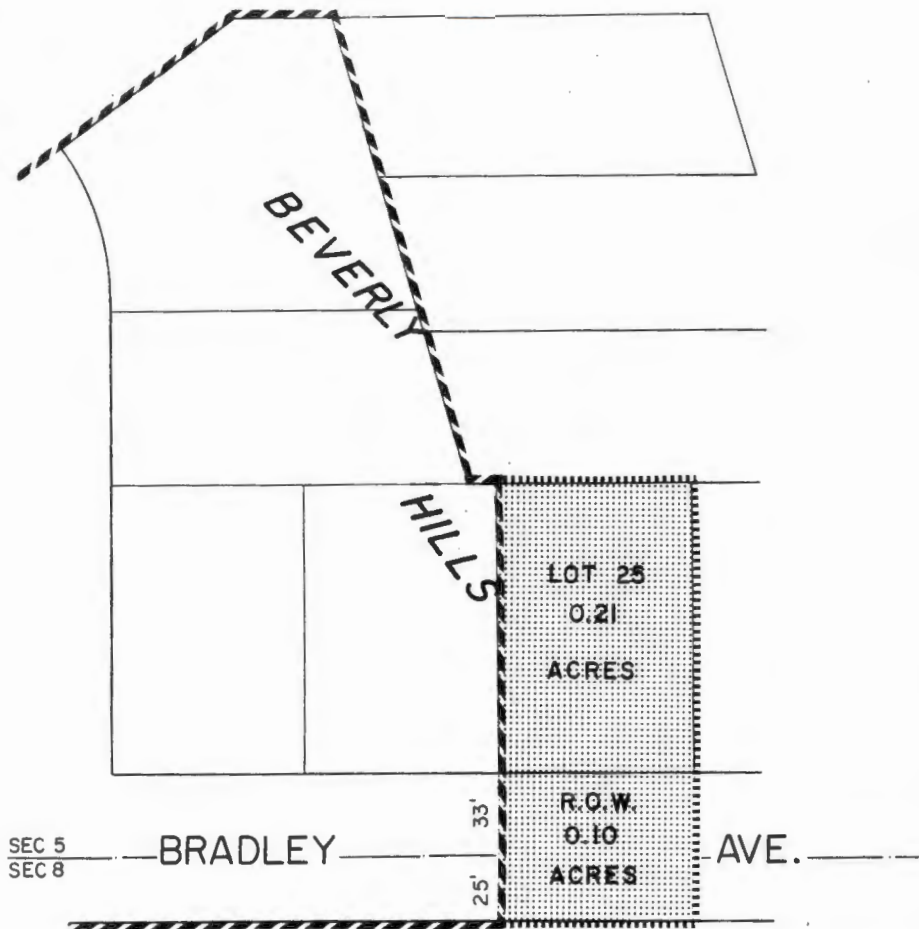
NEW CITY LIMITS [dotted line]

DRAWN BY: PAT 6/14/89
CHECKED BY: RS 6/15/89

NORTH

CITY OF URBANA
ENGINEERING DEPARTMENT

Balbir S. Kundra.
CITY ENGINEER



Lot 25 of Beverly Hills in Champaign County, Illinois, encompassing 0.21 acres, more or less;

Together with the adjacent portion of Bradley Avenue right-of-way, encompassing 0.10 acres, more or less;

All situated in Sections 5 and 8, Township 19 North, Range 9 East of the Third Principal Meridian, Champaign County, Illinois.

MAP SHOWING AREA
ANNEXED BY
CITY ORDINANCE NO. 8889-84
CITY OF URBANA, ILLINOIS
CHAMPAIGN COUNTY
DATE: JUNE 5, 1989

SCALE:
50' 25' 0 50'

AREA OF ANNEXATION :.....

EXISTING CITY LIMITS - - - - -

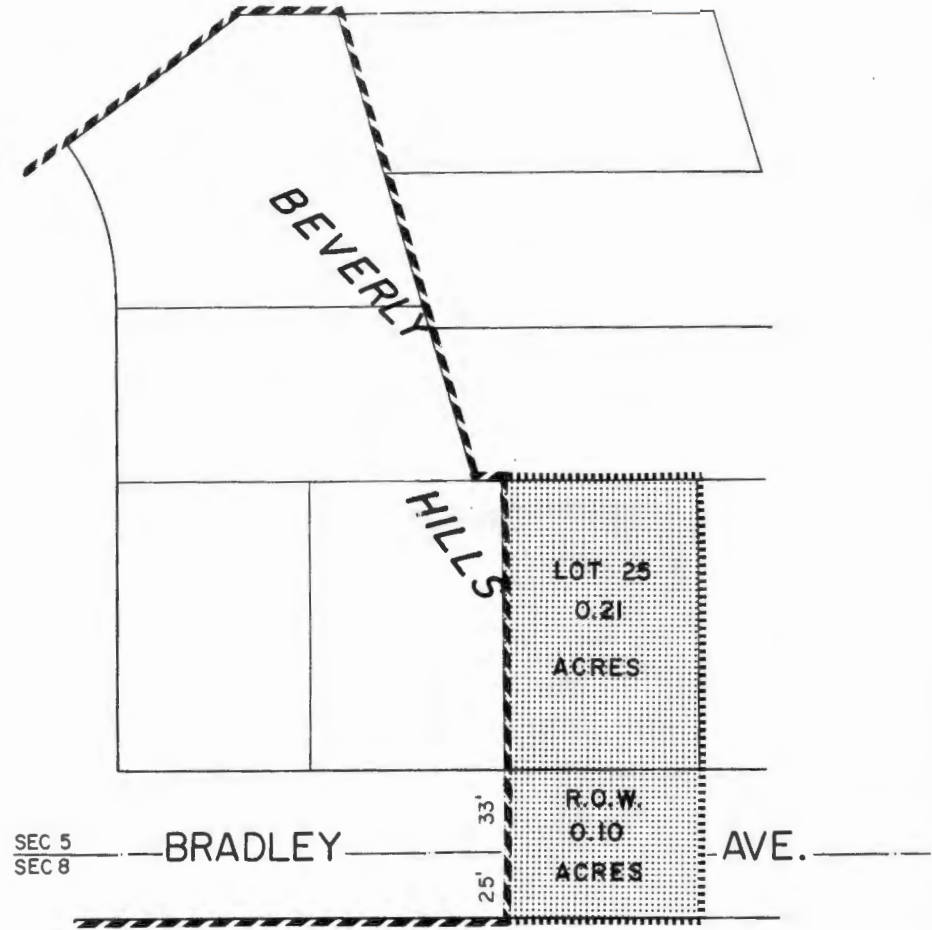
NEW CITY LIMITS :.....

DRAWN BY: PAT 6/14/89
CHECKED BY: RS 6/15/89

NORTH

CITY OF URBANA
ENGINEERING DEPARTMENT

Beth S. Kindra.
CITY ENGINEER



Lot 25 of Beverly Hills in Champaign County, Illinois, encompassing 0.21 acres, more or less;

Together with the adjacent portion of Bradley Avenue right-of-way, encompassing 0.10 acres, more or less;

All situated in Sections 5 and 8, Township 19 North, Range 9 East of the Third Principal Meridian, Champaign County, Illinois.

MAP SHOWING AREA
ANNEXED BY
CITY ORDINANCE NO. 8889-84
CITY OF URBANA, ILLINOIS
CHAMPAIGN COUNTY
DATE: JUNE 5, 1989

SCALE:
50' 25' 0 50'
AREA OF ANNEXATION
EXISTING CITY LIMITS - - - - -
NEW CITY LIMITS
DRAWN BY: PAT 6/14/89
CHECKED BY: RS 6/15/89

NORTH
CITY OF URBANA
ENGINEERING DEPARTMENT

Beth S. Kindra.
CITY ENGINEER

