

ORDINANCE ANNEXING CERTAIN TERRITORY  
TO THE CITY OF URBANA

WHEREAS, the hereinafter described territory is situated in unincorporated territory adjacent to and contiguous to the City of Urbana, Illinois, and includes certain Highways within the Urbana Township, and Notice was given to the Board of Township Trustees and the Township Commissioner of Highways, said Notice being mailed on September 6, 1979, that this Ordinance would be voted upon at the regular meeting of this Council at 7:30 P.M., Monday, September 17, 1979, and the Affidavit of mailing such notices was duly recorded with the Recorder of Deeds of Champaign County, Illinois, and

WHEREAS, a written Petition signed by all of the owners of Record and all electors residing therein, of all land within such territory, has been filed with the City Clerk of the City of Urbana, Illinois, requesting annexation thereof to the City of Urbana, and

WHEREAS, it has been determined that said Petition complies with all requirements of the law therefor, and

WHEREAS, the majority of the Members of the Council are of the opinion that it would be for the best interests of the People of the City of Urbana, Illinois, that said territory be annexed to and made a part of the said City,

THEREFORE, BE IT ORDAINED BY THE CITY COUNCIL OF THE CITY OF URBANA,  
ILLINOIS:

Section 1. That the following described real estate, viz:

Lot 400 in Ennis Ridge Sixteenth Subdivision, together with the full right-of-way of Scovill Street being 60 feet in width, from the West property line to the East property line extended of said Lot 400,

be and the same is hereby annexed to the City of Urbana, Illinois.

Section 2. That the City Clerk be authorized and directed to file for record a certified copy of this Ordinance together with an accurate map of the territory hereinabove described in the Office of the Recorder of Deeds for Champaign County, Illinois.

Section 3. This Ordinance shall be in full force and effect from after its passage and recording as provided by law.

This Ordinance is hereby passed by the affirmative vote, the "ayes" and "nays" being called, of a majority of the members of the Council of the

City of Urbana, Illinois, at a regular meeting of said Council on the 17th day of September, A.D. 1979.

PASSED by the City Council this 17th day of September, A.D. 1979.

Ruth S. Brookens  
Ruth S. Brookens, City Clerk

APPROVED by the Mayor this 17th day of Sept., A.D. 1979.

Jeffrey T. Markland  
Jeffrey T. Markland, Mayor

This document prepared by:  
Jack Waaler, Corporation Counsel  
City of Urbana, Illinois  
2503 South Neil Street  
Champaign, Illinois 61820  
Telephone: (217) 352-7887

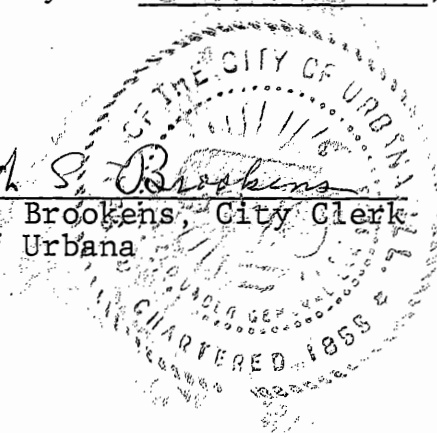
STATE OF ILLINOIS )  
                          ) SS  
COUNTY OF CHAMPAIGN )

CLERK'S CERTIFICATE

I, RUTH S. BROOKENS, City Clerk of the City of Urbana, Illinois, and keeper of the records, files and seal of said City, do hereby certify that the foregoing is a true and exact copy of an ordinance entitled "AN ORDINANCE ANNEXING CERTAIN TERRITORY TO THE CITY OF URBANA" adopted by the City Council of the City of Urbana, Illinois, on the 17th day of September, A.D. 1979, as appears in the records and files in my office remaining.

Given under my hand and seal of said City of Urbana, Illinois, this 18th day of October, A.D. 1979.

*Ruth S. Brookens*  
Ruth S. Brookens, City Clerk  
City of Urbana

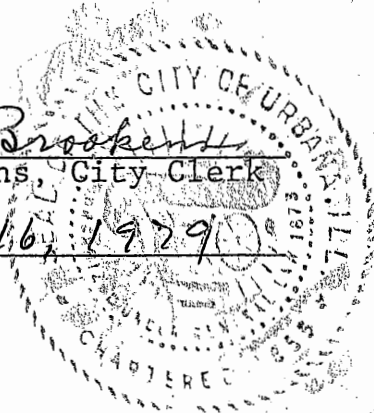


7980-31

THIS IS THE ATTACHMENT WHICH IS REFERRED TO IN  
ORDINANCE NO. 7980-31 AND IS INCORPORATED  
THEREIN BY REFERENCE.

Ruth S. Brookens  
Ruth S. Brookens, City Clerk

October 16, 1979  
Date



(79)	(80)	(81)	(82)	(83)	(84)
2213	2211	2209	B A 2207	2205	2203

POND					
1202	2212	2210	2208	2206	2204
(92)	(91)	(90)	(89)	(88)	(87)
(93)	(94)	(95)	(96)	(97)	(98)
2213	2211	2209	2207	2205	2203

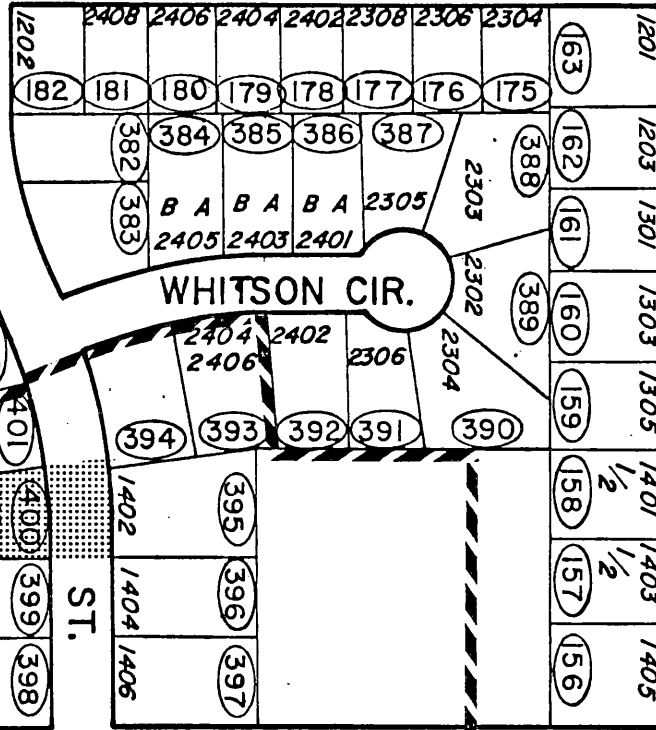
FLETCHER					
1302	2212	2210	2208	2206	2204
(106)	(105)	(104)	(103)	(102)	(101)
(107)	(108)	(109)	(110)	(111)	(112)
1304	2211	2209	2207		2203

VAWTER							
1402	2218	2216	2214	2212	2210	2208	2206
(49)	(48)	(47)	(46)	(45)	(44)	(43)	
(55)	(54)	(53)	(52)	(51)	(50)		
1404	1/2	1/2	1/2	1/2	1/2		
	2217	2215	2213	2211	2209	2207	

2	(191)														
2	(190)	(189)	(188)	(187)	(186)	(185)	(184)	(183)	(164)						
1/114	190	189	188	187	186	185	184	183	164						
1/118	2407	2405	2403	2401	2307	2305	2303								
1/116															

108														
	(226)	(227)	(228)	(229)	(230)	(231)	(232)							
	226	227	228	229	230	231	232							
1/110	225	224	223	222	221	220	219							
	2511	2509	2507	2505	2503									

POND					
1201	2512	2510	2508	2506	2504
(212)	(213)	(214)	(215)	(216)	(217)
(218)					



1/111	1/113	1/115	1/117	1/201	1/203
A B	A B A B	A B	A B	1/2	1/2
206	207	208	209	210	211

ST.

ST.

WHITSON CIR.

ST.

ST.

PHILO

I.P.C.

AREA OF  
ANNEXATION