

AN ORDINANCE ANNEXING CERTAIN TERRITORY
TO THE CITY OF URBANA, ILLINOIS

WHEREAS, it appears to the City Council of the City of Urbana, Illinois, that the herein described territory is contiguous to the City of Urbana, Illinois, and is dedicated and used for street purposes under the jurisdiction of the Urbana Township Highway Department, and none of said territory is situated in any incorporated city or village; and,

WHEREAS, said territory is located, bounded, and described as follows:

Eureka Street between Romine Street and the East Line of Lot Number 86, extended southward, in Doctor Ellis Second Subdivision, recorded in Plat Book N at Page 113, in the office of the recorder of Champaign County, Illinois

and; WHEREAS, two-thirds of the aldermen are of the opinion that it would be for the best interests of the people of the City of Urbana, Illinois, that said territory be annexed to and made a part of the City of Urbana, Illinois, a municipal corporation;

THEREFORE, BE IT ORDAINED BY THE CITY COUNCIL OF THE CITY OF URBANA, ILLINOIS, that said described territory be, and the same is hereby annexed to and shall hereafter be a part of the City of Urbana, Illinois, and that the corporate limits of said city be and the same shall be changed so as to include said territory within the corporate limits of said city.

The City Clerk of the City of Urbana, Illinois, after the passage of this ordinance of annexation, shall certify a correct copy of this ordinance, together with an accurate map, and shall file the same with the Recorder of Deeds of Champaign County, Illinois.

ADOPTED by the City Council of the City of Urbana, Illinois, this 6th day of May, 1968.

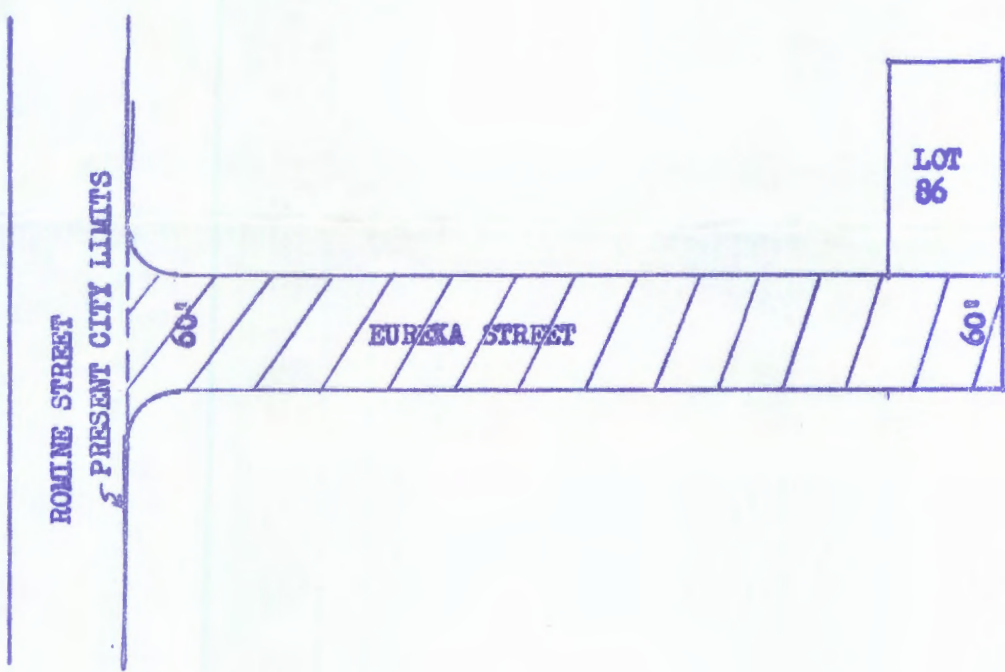
Dwaine E. Kuty
City Clerk

APPROVED by the Mayor this 6th day of May, 1968.

Stanley B. Weaver
Mayor

mapped


ANNEXATION PLAT OF
EUREKA STREET FROM THE EAST LINE OF ROMINE STREET
TO THE EAST LINE OF LOT 86 OF DR. ELLIS SECOND
SUBDIVISION EXTENDED SOUTHWARD, SITUATED IN THE
COUNTY OF CHAMPAIGN, STATE OF ILLINOIS



M.H.KINCH
ILLINOIS REGISTERED LAND SURVEYOR NO. 358
URBANA, ILLINOIS

M.H. Kinch

MAY 14, 1968


SCALE 1"=100'

mapped