

AN ORDINANCE ANNEXING CERTAIN TERRITORY
TO THE CITY OF URBANA, ILLINOIS

WHEREAS, it appears to the City Council of the City of Urbana, Illinois, that the herein described territory is contiguous to the City of Urbana, Illinois, and is dedicated and used for street purposes under the jurisdiction of the Urbana Township Highway Department, and none of said territory is situated in any incorporated city or village; and,

WHEREAS, said territory is located, bounded, and described as follows:

Weaver Street from the City limits Southeasterly to Rainbow View Drive; and Weaver Place; situated in Champaign County, State of Illinois

and; WHEREAS, two-thirds of the aldermen are of the opinion that it would be for the best interests of the people of the City of Urbana, Illinois, that said territory be annexed to and made a part of the City of Urbana, Illinois, a municipal corporation;

THEREFORE, BE IT ORDAINED BY THE CITY COUNCIL OF THE CITY OF URBANA, ILLINOIS, that said described territory be, and the same is hereby annexed to and shall hereafter be a part of the City of Urbana, Illinois, and that the corporate limits of said City be and the same shall be changed so as to include said territory within the corporate limits of said City.

The City Clerk of the City of Urbana, Illinois, after the passage of this ordinance of annexation, shall certify a correct copy of this ordinance, together with an accurate map, and shall file the same with the Recorder of Deeds of Champaign County, Illinois.

ADOPTED by the City Council of the City of Urbana, Illinois, this 4th day of December, 1967.

Dorothy Exum
City Clerk

APPROVED BY the Mayor this 4th day of December, 1967.

Stanley B. Weaver
Mayor

STATE OF ILLINOIS)
) SS.
COUNTY OF CHAMPAIGN

I, DUANE ECKERTY, City Clerk of the City of Urbana, Illinois, and keeper of the records, files and seal of said City, do hereby certify that the foregoing is a true and exact copy of an ordinance entitled, "An Ordinance Annexing Certain Territory to the City of Urbana, Illinois", adopted by the City Council of the City of Urbana, Illinois, on the 4th day of December, 1967, as appears in the records and files in my office remaining.

Given under my hand and seal of said City of Urbana, Illinois, this 5th day of December, 1967.

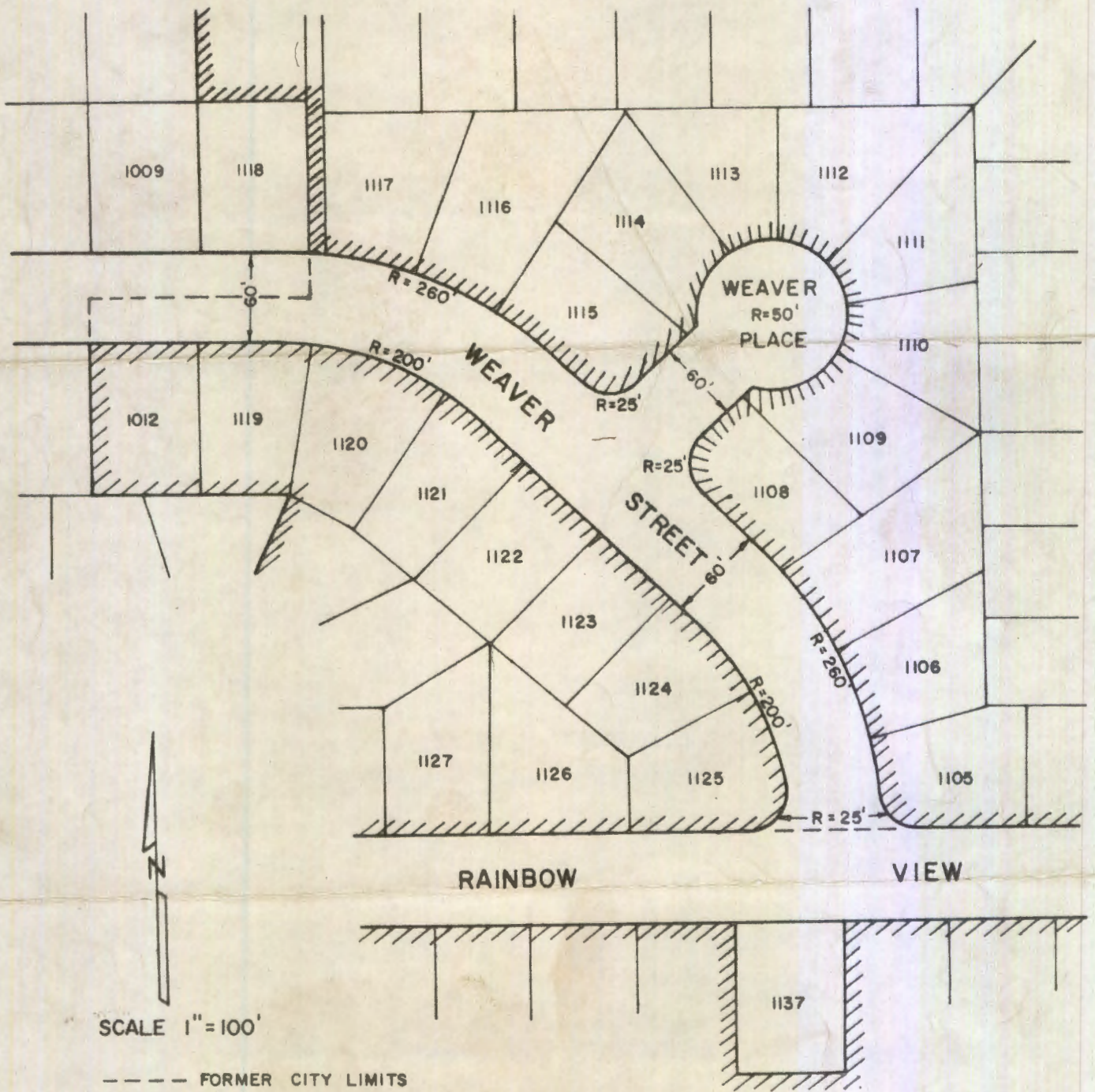


Duane Eckerty

CITY CLERK

PLAT OF TERRITORY ANNEXATION
TO THE CITY OF URBANA, ILLINOIS

WEAVER PLACE AND WEAVER STREET FROM THE CITY LIMITS OF THE CITY OF URBANA, ILLINOIS, TO RAINBOW VIEW, A PART LYING IN THE FIRST PLAT OF COUNTRY SQUIRE ESTATES AND THE REMAINDER LYING IN THE THIRD PLAT OF COUNTRY SQUIRE ESTATES, ALL SITUATED IN THE NORTHEAST QUARTER OF THE SOUTHEAST QUARTER OF SECTION 16, TOWNSHIP 19 NORTH, RANGE 9 EAST OF THE THIRD PRINCIPAL MERIDIAN, COUNTY OF CHAMPAIGN, STATE OF ILLINOIS.



SCALE 1"=100'

--- FORMER CITY LIMITS
////// NEW CITY LIMITS

CARL W. FREEMAN
ILLINOIS REGISTERED LAND SURVEYOR NO. 788
URBANA, ILLINOIS

Carl W. Freeman
CITY ENGINEER

DECEMBER 5, 1967