

AN ORDINANCE ANNEXING CERTAIN TERRITORY
TO THE CITY OF URBANA, ILLINOIS

WHEREAS, it appears to the City Council of the City of Urbana, Illinois, that a petition was filed with the City Clerk of the City of Urbana, Illinois on the 20th day of May, A.D. 1963, requesting the annexation of the territory hereinafter described, which said petition was signed under oath by all of the owners of record of real estate and all of the electors residing in said territory, and,

WHEREAS, at least two-thirds of the alderman are of the opinion that it would be for the best interests of the people of the City of Urbana, Illinois that said territory be annexed to and made a part of the City Limits of said City.

THEREFORE, BE IT ORDAINED BY THE CITY COUNCIL OF THE CITY OF URBANA, ILLINOIS.

SECTION I. That the territory described as follows to-wit:

Ennis Ridge Third Subdivision, in Champaign County, Illinois, except Lots Nos. 38, 39, 42, 43, 55, 59, and 62 therein; and all of Ennis Ridge Fourth Subdivision; and the East 713 feet of the South Half ($\frac{1}{2}$) of the Northwest Quarter ($\frac{1}{4}$) of Section 21, Township 19 North, Range 9 East of the Third Principal Meridian; all situated in Champaign County, Illinois.

be, and the same is hereby annexed to, and shall hereafter be a part of the City of Urbana, Illinois, and that the corporate limits of said City be, and the same shall be changed so as to include said territory within the corporate limits of said City.

SECTION II. The City Clerk of the City of Urbana, Illinois, shall record with the Recorder of Deeds of the County of Champaign, Illinois, a copy of this ordinance, together with an accurate map of the annexed territory.

Adopted by the City Council of the City of Urbana, Illinois, this 17th day of June, A.D. 1963.

Bess F. Holmes
CITY CLERK

Approved by the Mayor this 17th day of June, A.D. 1963.


Stanley B. Beaver
MAYOR

STATE OF ILLINOIS)
COUNTY OF CHAMPAIGN) SS.

I, BESS M. HOLMES, City Clerk of the City of Urbana, Illinois, and keeper of the records, files and seal of said City, do hereby certify that the foregoing is a true and exact copy of an ordinance entitled, "An Ordinance Annexing Certain Territory To The City Of Urbana, Illinois", adopted by the City Council of the City of Urbana, Illinois, on the 17th day of June A. D. 1963, as shown on the records and files in my office remaining.

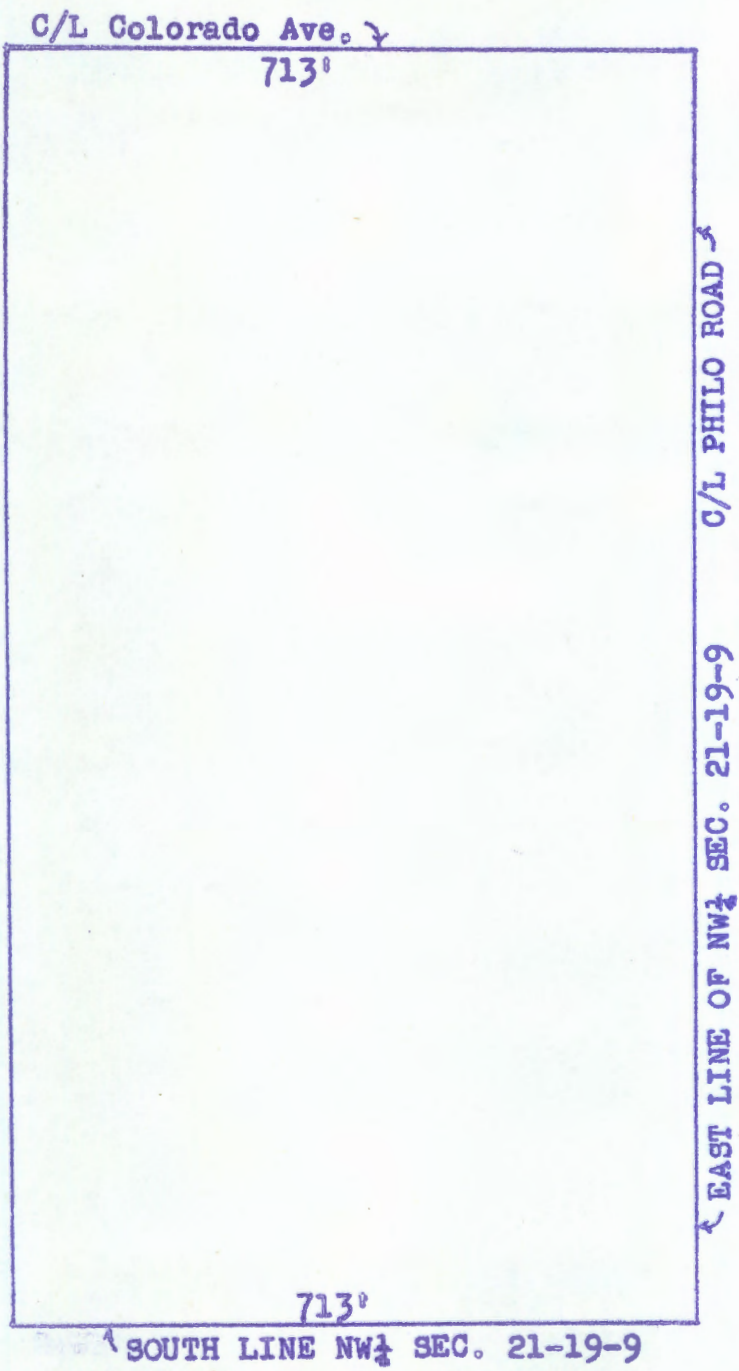
Given under my hand and seal of said City of Urbana, Illinois, this 19th day of June A. D. 1963.




CITY CLERK

ANNEXATION PLAT OF

EAST 713 FEET OF SOUTH ONE HALF OF NORTHWEST QUARTER
OF SECTION 21 T19N R9E OF 3RD P.M. SITUATED IN THE
COUNTY OF CHAMPAIGN, STATE OF ILLINOIS.



BY: M. H. KINCH
CITY ENGINEER
URBANA, ILLINOIS

MAY 29, 1963

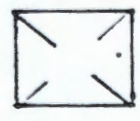
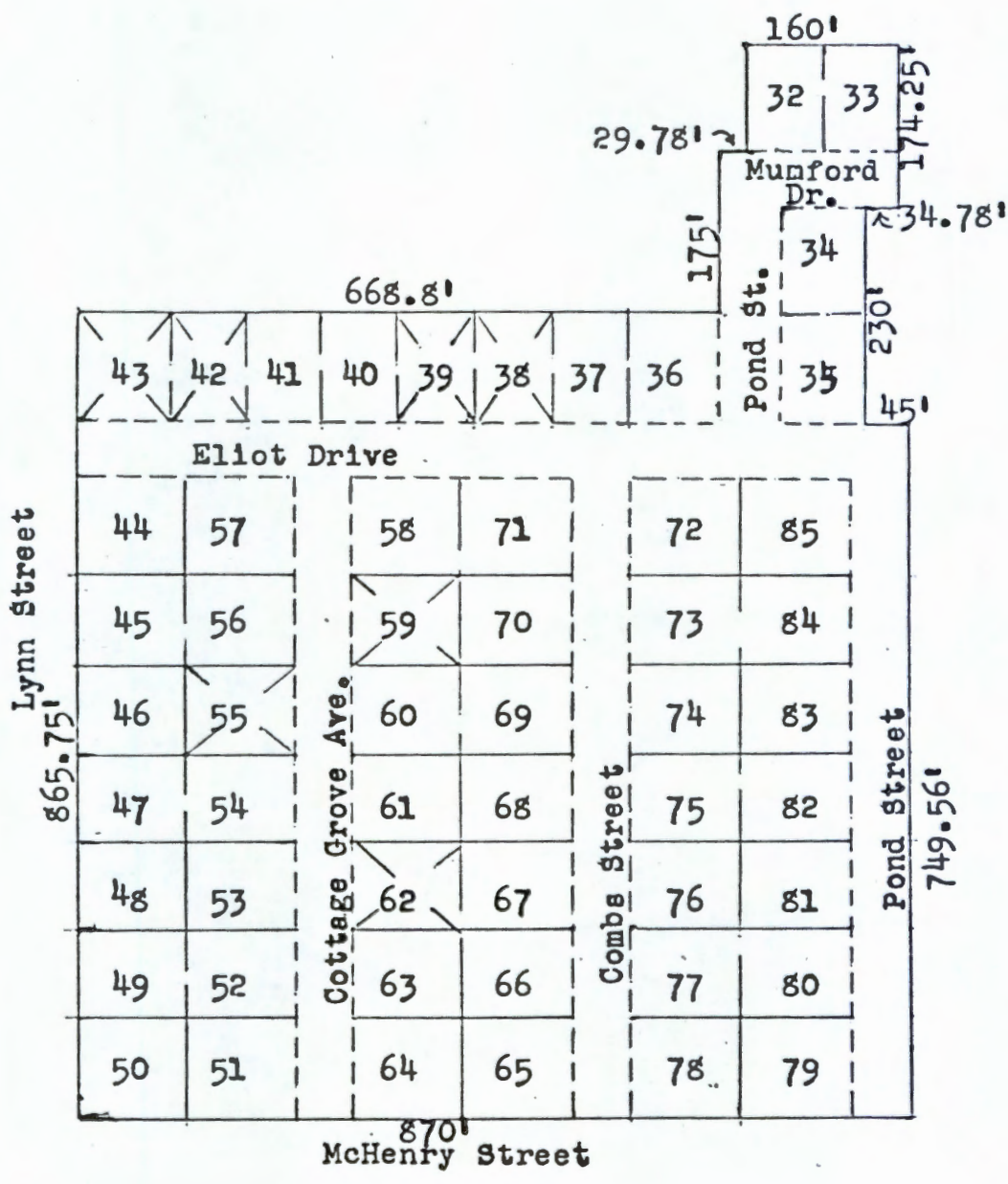


SCALE 1"=200'

w/6364-14

ANNEXATION PLAT OF

ENNIS RIDGE THIRD SUBDIVISION IN CHAMPAIGN COUNTY, ILLINOIS, EXCEPT LOTS NUMBERS 38, 39, 42, 43, 55, 59, 62, THEREIN; AND BEING SITUATED IN THE COUNTY OF CHAMPAIGN, STATE OF ILLINOIS.



Indicates lots not included in this annexation

BY: M. H. KINCH
CITY ENGINEER
URBANA, ILLINOIS

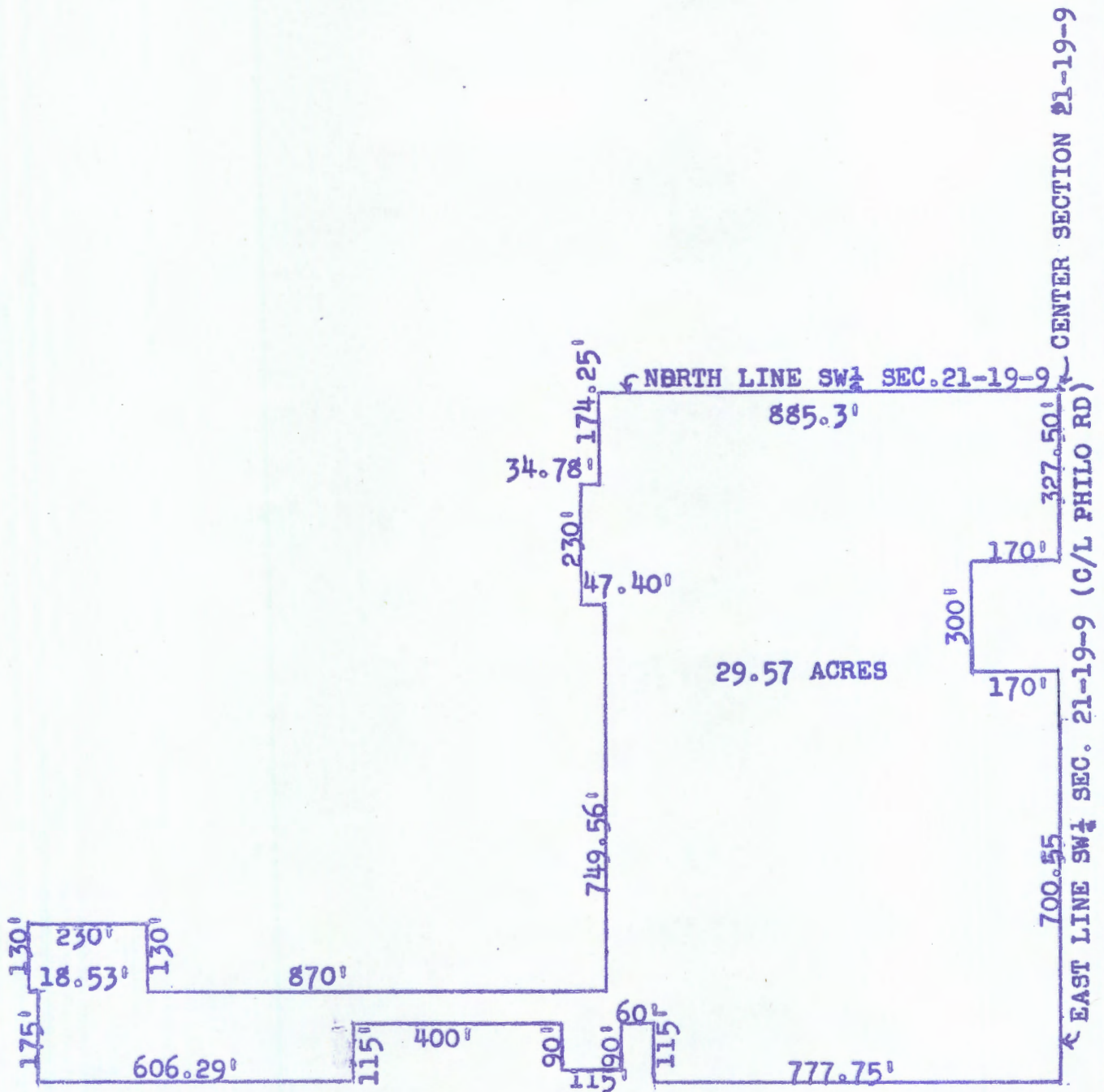


SCALE 1"=200'

JUNE 19, 1963

60-11-0
5-0-81-0

ANNEXATION PLAT OF
ENNIS RIDGE FOURTH SUBDIVISION SITUATED IN THE COUNTY
OF CHAMPAIGN, STATE OF ILLINOIS



BY: M. H. KINCH
CITY ENGINEER
URBANA, ILLINOIS
MAY 29, 1963



SCALE 1"=300'