

AN ORDINANCE ANNEXING CERTAIN TERRITORY  
TO THE CITY OF URBANA, ILLINOIS

WHEREAS, it appears to the City Council of the City of Urbana, Illinois, that the unincorporated territory hereinafter described, contains less than sixty (60) acres and is wholly bounded by the municipality of the City of Urbana, Illinois, a municipal corporation, and,

WHEREAS, at least two-thirds of the aldermen of said City are of the opinion that it would be for the best interests of the people of the City of Urbana, Illinois, that said territory be annexed and made a part of the City limits of said City.

THEREFORE, BE IT ORDAINED BY THE CITY COUNCIL OF THE CITY OF URBANA, ILLINOIS.

SECTION I. That the territory described as follows to-wit:

Lot Number 1050, Second Plat of  
Country Squire Estates Subdivision,  
situated in Champaign County, Illinois,

be, and the same is hereby annexed to, and shall hereafter be a part of the City of Urbana, Illinois, and that the corporate limits of said City be, and the same shall be changed so as to include said territory within the corporate limits of said City.

SECTION II. The City Clerk of the City of Urbana, Illinois, shall record with the Recorder of Deeds of the County of Champaign, Illinois, a copy of this ordinance, together with an accurate map of the annexed territory.

Adopted by the City Council of the City of Urbana, Illinois, this <sup>4th</sup> ~~20th~~ day of <sup>September</sup> ~~August~~, 1962.

*Bess M. Holmes*  
CITY CLERK

Approved by the Mayor this <sup>4th</sup> ~~20th~~ day of <sup>September</sup> ~~August~~, 1962.

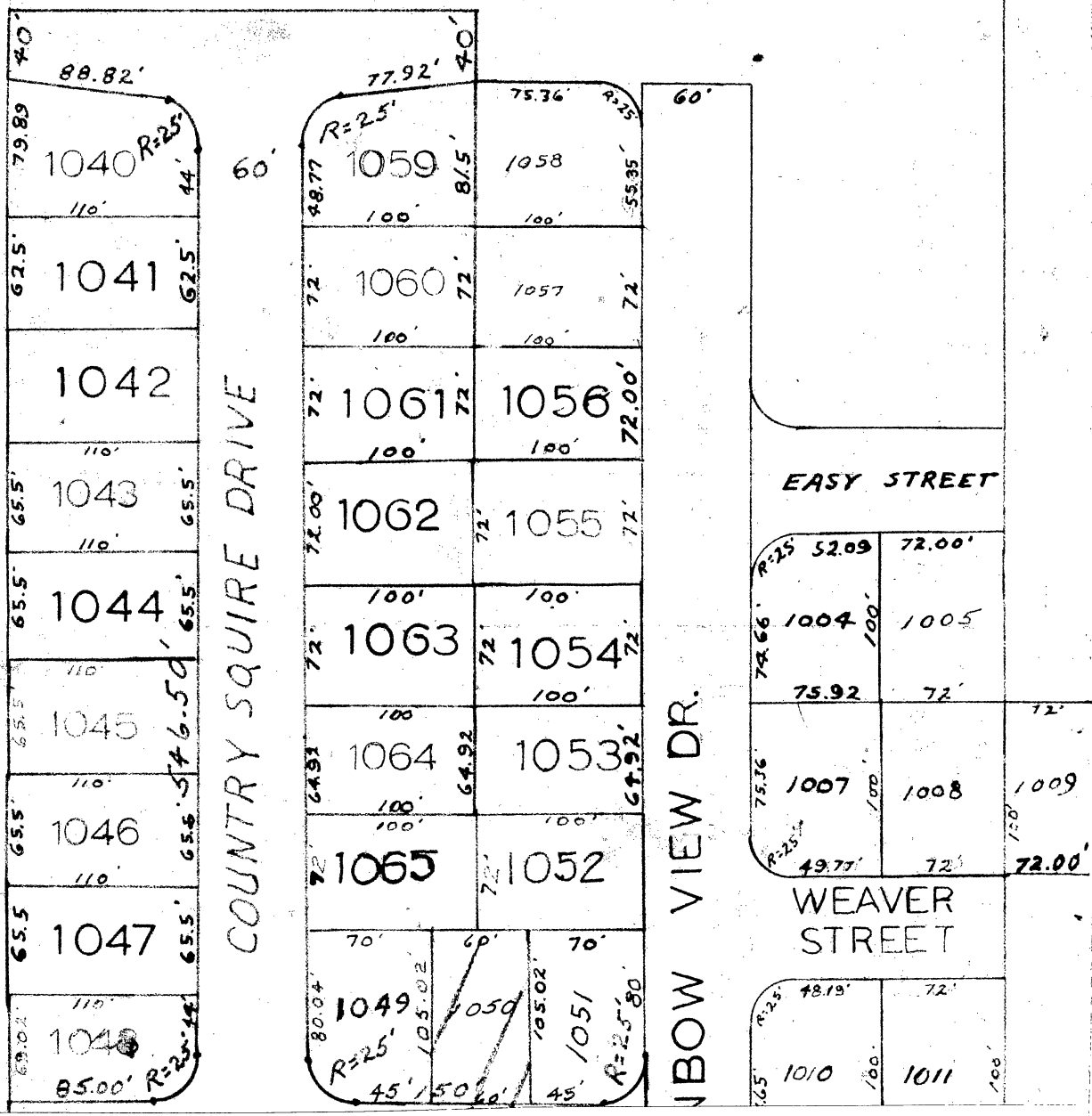
*Stanley B. Weaver*  
MAYOR

city

ANNEXATION PLAT OF CERTAIN  
LOTS OF COUNTRY SQUIRES ESTATES AND COUNTRY SQUIRES  
ESTATES II SUBDIVISION TO THE COUNTY OF  
CHAMPAIGN, ILLINOIS, SITUATED IN THE COUNTY OF  
CHAMPAIGN, STATE OF ILLINOIS.



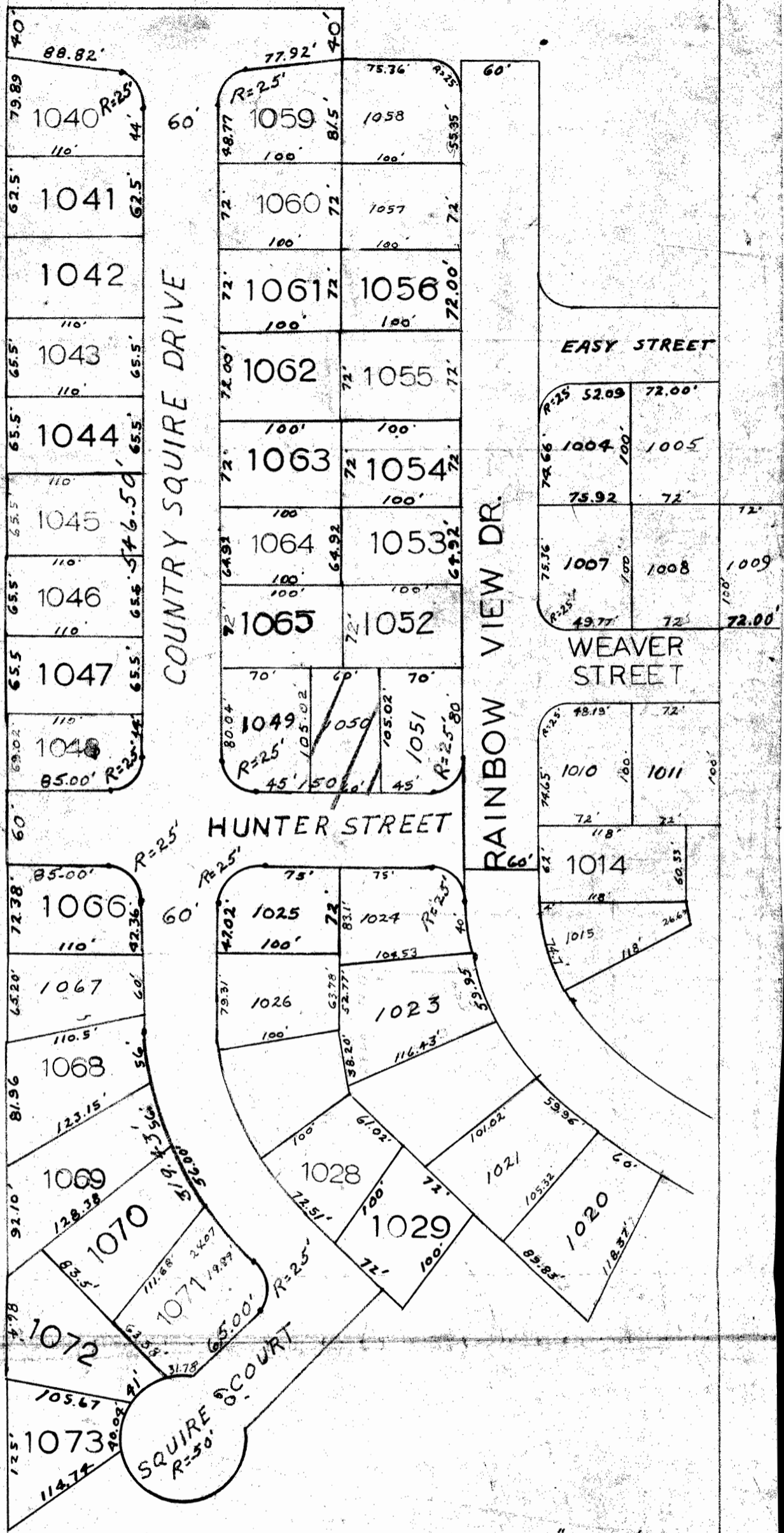
E. WASHINGTON STREET



80.82'	79.89'	1040	R=25'	44'	70'
62.5'	62.5'	1041			
110'		1042			
65.5'	65.5'	1043			
65.5'	65.5'	1044			
110'		1045			
65.5'	65.5'	1046			
65.5'	65.5'	1047			
69.02'	69.02'	1048	R=25'	44'	70'
85.00'					

48.77'	77.92'	1059	R=25'	81.5'	70'
100'		1060			
72'		1061			
72'		1062			
72'		1063			
72'		1064			
72'		1065			
70'		1049	R=25'	45'	70'
60'		1050			
70'		1051	R=25'	45'	70'

75.36'	75.36'	1058	R=25'	55.95'	60'
100'		1057			
100'		1056			
72.00'		1055			
72'		1054			
72'		1053			
72'		1052			
72.00'		1004	R=25'	52.09'	72.00'
72.00'		1005			
72.00'		1007	R=25'	49.77'	72.00'
72.00'		1008			
72.00'		1009			
72.00'		1010	R=25'	48.19'	72.00'
72.00'		1011			



SCALE 1" = 100'

BY: M. H. KINCH  
CITY ENGINEER  
URBANA, ILLINOIS

August 17, 1962