

AN ORDINANCE ANNEXING CERTAIN TERRITORY
TO THE CITY OF URBANA, ILLINOIS

WHEREAS, it appears to the City Council of the City of Urbana, Illinois, that the unincorporated territory hereinafter described, contains less than sixty (60) acres and is wholly bounded by the municipality of the City of Urbana, Illinois, a municipal corporation, and,

WHEREAS, at least two-thirds of the aldermen of said City are of the opinion that it would be for the best interests of the people of the City of Urbana, Illinois, that said territory be annexed and made a part of the City limits of said City.

THEREFORE, BE IT ORDAINED BY THE CITY COUNCIL OF THE CITY OF URBANA, ILLINOIS.

SECTION I. That the territory described as follows to-wit:

Lot Number 1967, Second Plat of Country
Squire Estates Subdivision, situated in
Champaign County, Illinois,

be, and the same is hereby annexed to, and shall hereafter be a part of the City of Urbana, Illinois, and that the corporate limits of said City be, and the same shall be changed so as to include said territory within the corporate limits of said City.

SECTION II. The City Clerk of the City of Urbana, Illinois, shall record with the Recorder of Deeds of the County of Champaign, Illinois, a copy of this ordinance, together with an accurate map of the annexed territory.

Adopted by the City Council of the City of Urbana, Illinois, this ^{4th} ~~20th~~ day of ^{September} ~~August~~, 1962.

Bess J. Holmes

CITY CLERK

Approved by the Mayor this ^{4th} ~~20th~~ day of ^{September} ~~August~~, 1962.

Stanley B. Weaver

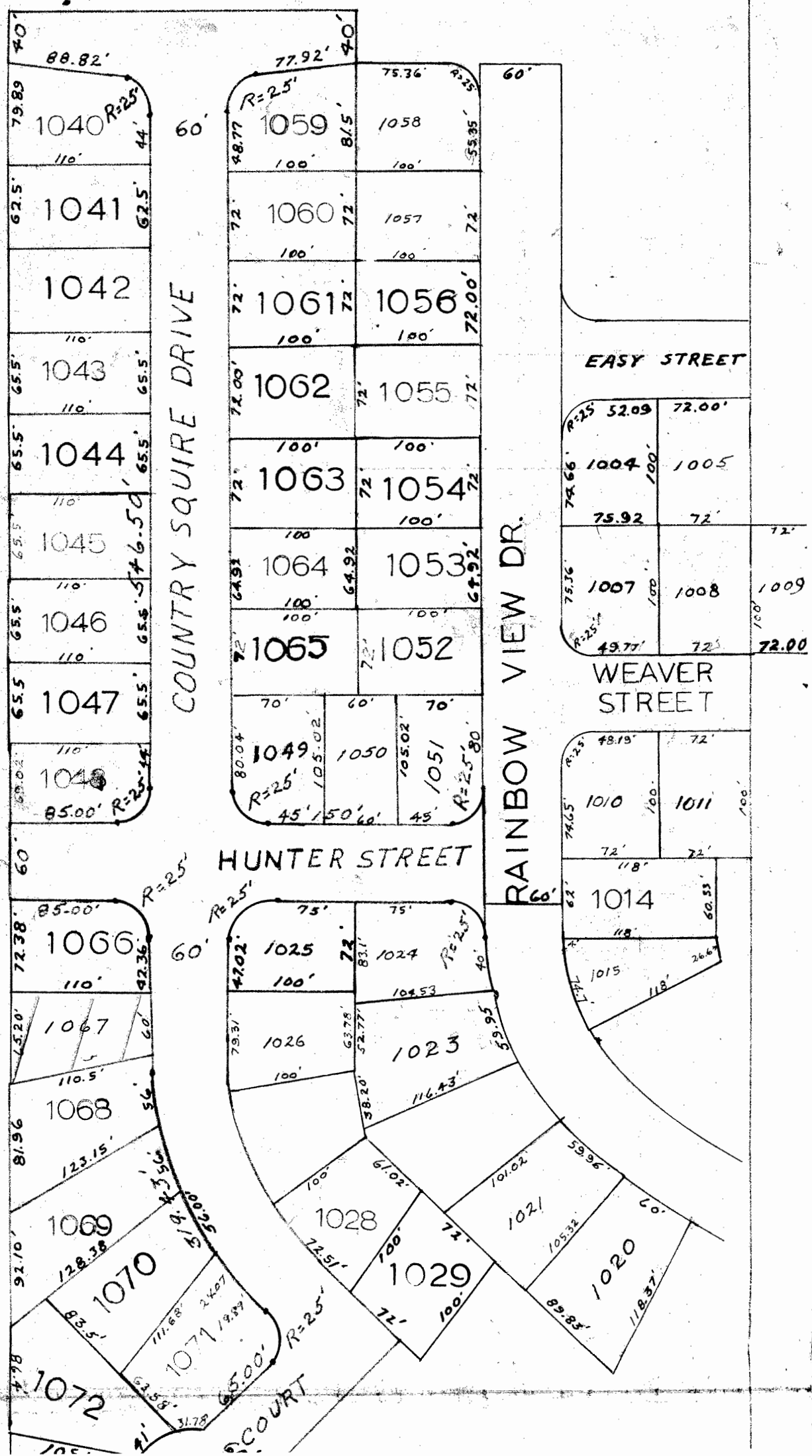
MAYOR

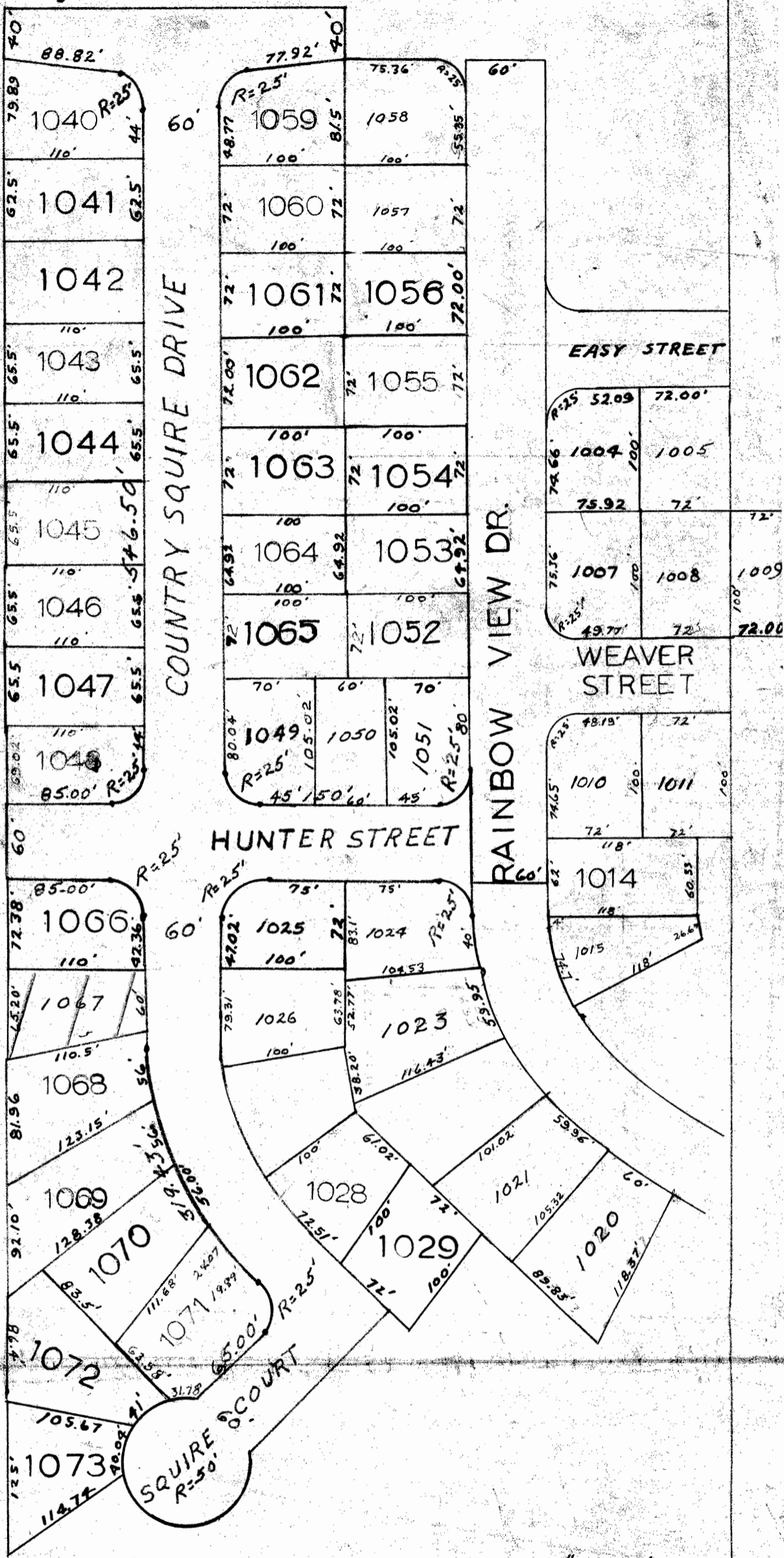
City of Champaign

ANNEXATION PLAT OF CERTAIN
LOTS OF COUNTRY SQUIRES ESTATES AND COUNTRY SQUIRES
ESTATES II SUBDIVISION TO THE COUNTY OF
CHAMPAIGN, ILLINOIS, SITUATED IN THE COUNTY OF
CHAMPAIGN, STATE OF ILLINOIS.



E. WASHINGTON STREET





BY: M. H. KINCH
 CITY ENGINEER
 URBANA, ILLINOIS

SCALE 1" = 100'

7, 1961 August 17, 1962