

20
6263-20

AN ORDINANCE ANNEXING CERTAIN TERRITORY
TO THE CITY OF URBANA, ILLINOIS.

W H E R E A S, it appears to the City Council of the City of Urbana, Illinois that a petition was filed with the City Clerk of the City of Urbana, Illinois on the 6th day of August, A.D. 1962, requesting the annexation of the territory hereinafter described, which said petition was signed under oath by all of the owners of record of real estate and all of the electors residing in said territory, and

W H E R E A S, at least two-thirds of the aldermen are of the opinion that it would be for the best interests of the people of the City of Urbana, Illinois that said territory be annexed to and made a part of the City limits of said City.

THEREFORE, BE IT ORDAINED BY THE CITY COUNCIL OF THE CITY OF URBANA, ILLINOIS.

SECTION I. That the territory described as follows to-wit:

Lots 1007, 1008, 1010, 1011, 1015, 1021, 1024 and 1026, all in the First Plat of Country Squire Estates, in Champaign County, Illinois,

Lots 1057 and 1058, both in the Second Plat of Country Squire Estates, in Champaign County, Illinois,

be, and the same is hereby annexed to, and shall hereafter be a part of the City of Urbana, Illinois, and that the corporate limits of said City be, and the same shall be changed so as to include said territory within the corporate limits of said City.

SECTION II. The City Clerk of the City of Urbana, Illinois, shall record with the Recorder of Deeds of the County of Champaign, Illinois, a copy of this ordinance, together with an accurate map of the annexed territory.

Adopted by the City Council of the City of Urbana, Illinois, this 6th day of August, A.D. 1962.


CITY CLERK

Approved by the Mayor this 6th day of August
A.D. 1962.

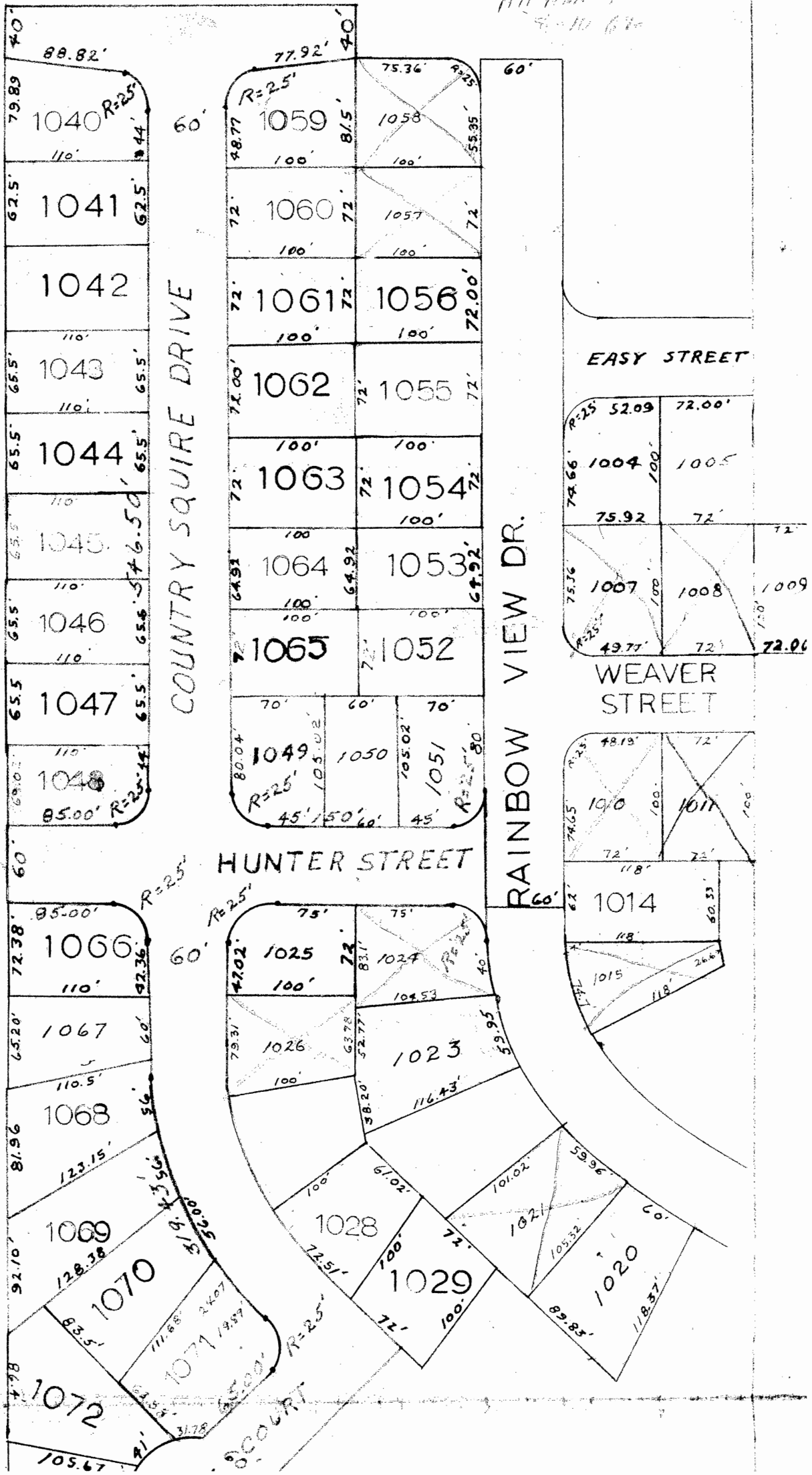

MAYOR

ANNEXATION PLAT OF CERTAIN
LOTS OF COUNTRY SQUIRES ESTATES AND COUNTRY SQUIRES
ESTATES II SUBDIVISION TO THE COUNTY OF
CHAMPAIGN, ILLINOIS, SITUATED IN THE COUNTY OF
CHAMPAIGN, STATE OF ILLINOIS.



E. WASHINGTON STREET

All Annexed
4-10-67



COUNTRY SQUIRE DRIVE

RAINBOW VIEW DR.

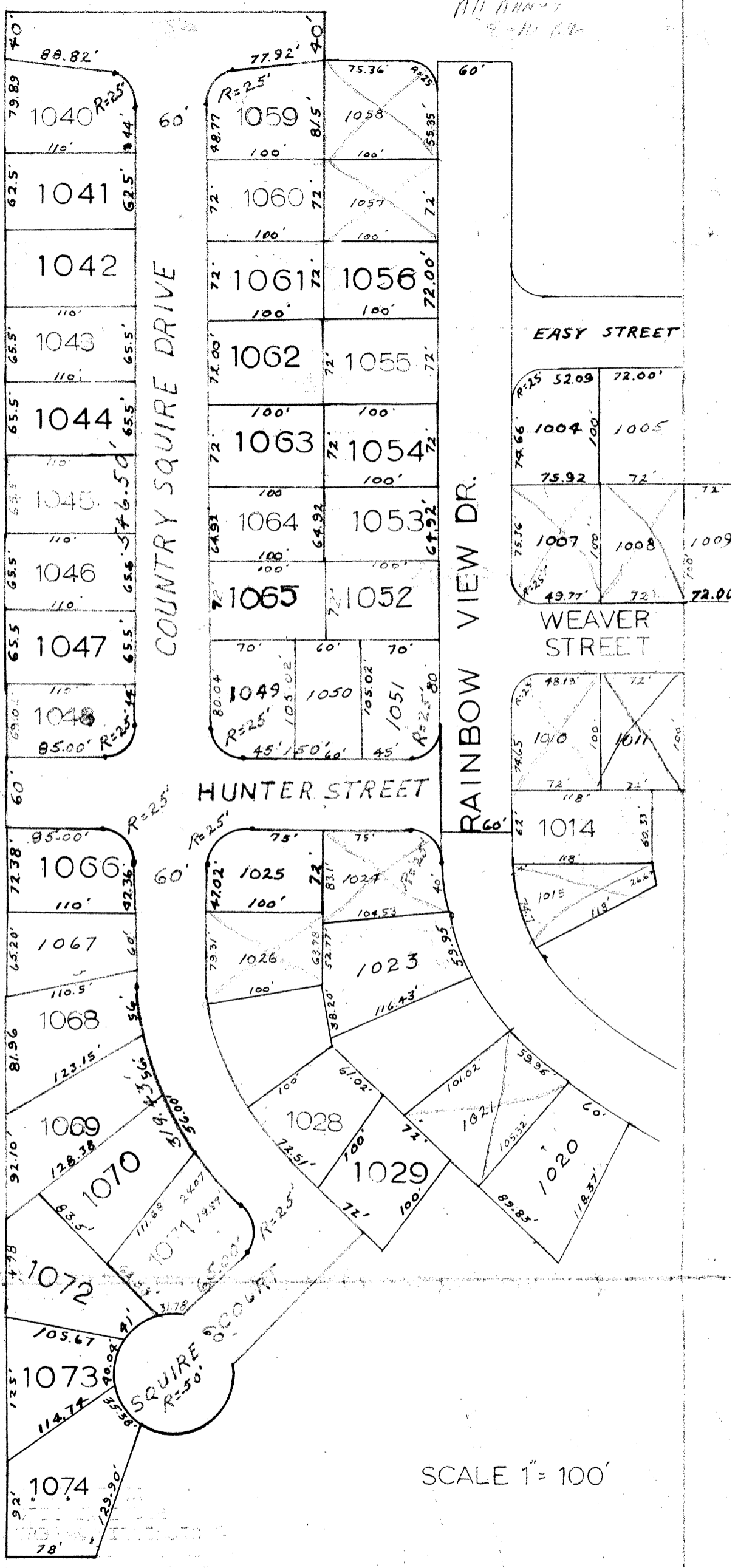
HUNTER STREET

EASY STREET

WEAVER STREET

COURT

All done 1-10-63



By: M.H.Kinch
City Engineer
Urbana, Illinois

SCALE 1" = 100'

January 17, 1963