

219

6162-62 ✓

AN ORDINANCE ANNEXING CERTAIN TERRITORY
TO THE CITY OF URBANA, ILLINOIS

WHEREAS, it appears to the City Council of the City of Urbana, Illinois, that a petition was filed with the City Clerk of the City of Urbana, Illinois on the 15th day of March, A.D. 1962, requesting the annexation of the territory hereinafter described, which said petition was signed under oath by all of the owners of record of real estate and ~~and~~ ^{there being no} electors residing in said territory, and,

WHEREAS, at least two-thirds of the aldermen are of the opinion that it would be for the best interests of the people of the City of Urbana, Illinois that said territory be annexed to and made a part of the City Limits of said City.

THEREFORE, BE IT ORDAINED BY THE CITY COUNCIL OF THE CITY OF URBANA, ILLINOIS.

SECTION I. That the territory described as follows to-wit:

Doctor Ellis First Subdivision, situated in Champaign County, Illinois

be, and the same is hereby annexed to, and shall hereafter be a part of the City of Urbana, Illinois, and that the corporate limits of said City be, and the same shall be changed so as to include said territory within the corporate limits of said City.

SECTION II. The City Clerk of the City of Urbana, Illinois, shall record with the Recorder of Deeds of the County of Champaign, Illinois, a copy of this ordinance, together with an accurate map of the annexed territory.

Adopted by the City Council of the City of Urbana, Illinois, this 19th day of March, A.D. 1962.


CITY CLERK

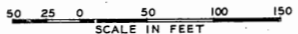
Approved by the Mayor this 19th day of March
A.D. 1962.


MAYOR

w/c 6162-62

DOCTOR ELLIS FIRST SUBDIVISION

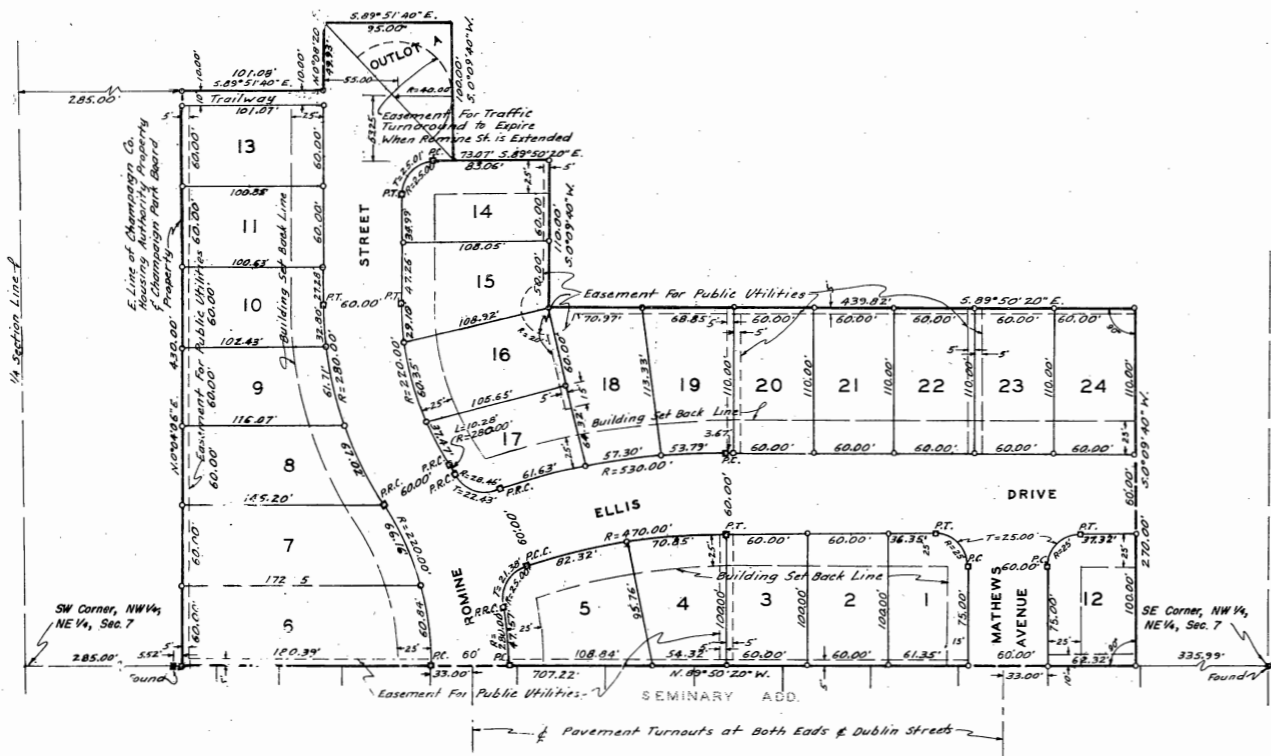
IN CHAMPAIGN COUNTY, ILLINOIS



APRIL 30, 1961 -

---LEGAL DESCRIPTION---

COMMENCING AT THE SOUTHWEST CORNER OF THE NORTHWEST QUARTER, NORTHEAST QUARTER OF SECTION 7, TOWNSHIP 9 NORTH, RANGE 9 EAST OF THE THIRD PRINCIPAL MERIDIAN IN CHAMPAIGN COUNTY, ILLINOIS; THENCE NORTH 89°50'20" WEST ALONG THE SOUTH LINE OF SAID NORTHWEST QUARTER, NORTHEAST QUARTER, A DISTANCE OF 335.99 FEET TO THE TRUE PLACE OF BEGINNING; THENCE CONTINUING ALONG SAID SOUTH LINE A DISTANCE OF 707.22 FEET; TO THE SOUTH EAST CORNER OF THE CHAMPAIGN COUNTY HOUSING AUTHORITY PROPERTY; THENCE NORTH 0°00'00" EAST A DISTANCE OF 150.00 FEET; THENCE SOUTH 09°51'40" EAST A DISTANCE OF 101.09 FEET; THENCE NORTH 0°08'20" EAST A DISTANCE OF 96.89 FEET; THENCE SOUTH 09°51'40" EAST A DISTANCE OF 95.00 FEET; THENCE SOUTH 0°00'40" WEST A DISTANCE OF 100.00 FEET; THENCE SOUTH 89°50'20" EAST A DISTANCE OF 73.07 FEET; THENCE SOUTH 0°00'40" WEST A DISTANCE OF 110.00 FEET; THENCE SOUTH 89°50'20" EAST A DISTANCE OF 490.82 FEET; THENCE SOUTH 0°00'00" WEST A DISTANCE OF 270.00 FEET TO THE PLACE OF BEGINNING, CONTAINING 6.442 ACRES MORE OR LESS.



APPROVED:

THE PLAN COMMISSION OF THE CITY OF URBANA, ILLINOIS

DATE: May 23, 1961 BY: *Carroll Phillips*
CHAIRMAN

APPROVED:

THE CITY COUNCIL OF THE CITY OF URBANA, ILLINOIS

DATE: 1 May 1961 BY: *Jack B. Evans*
MAYOR

ATTEST: *Debra D. Holmes*
CITY CLERK

APPROVED:

M.H. Kuehl
CITY ENGINEER



- LEGEND---
- o DENOTES IRON PIPE MONUMENT
 - DENOTES BRON PIPE MONUMENT SET IN CONCRETE
 - R DENOTES RADIUS DISTANCE
 - T DENOTES TANGENT DISTANCE
 - P.T. DENOTES POINT OF TANGENT
 - P.C. DENOTES POINT OF CURVE
 - P.R.C. DENOTES POINT OF REVERSE CURVE
 - P.C.C. DENOTES POINT OF COMPOUND CURVE
- LOT DIMENSIONS SHOWN ARE MEASUREMENTS BETWEEN ADJACENT MONUMENTS
ALL DISTANCES ALONG CURVES ARE ARC MEASUREMENTS

GOODSELL ENGINEERING ASSOCIATES
BY: *John Delbert Goodell*
JOHN DELBERT GOODSELL
ILLINOIS LAND SURVEYOR No. 1462
CHAMPAIGN, ILLINOIS

