

AN ORDINANCE ANNEXING CERTAIN TERRITORIES  
TO THE CITY OF URBANA, ILLINOIS

WHEREAS, it appears to the City Council of the City of Urbana, Illinois, that petitions were filed with the City Clerk of the City of Urbana, Illinois, on the 18th day of December, A.D., 1961, requesting the annexation of the territories hereinafter described, which said petitions were signed under oath by all of the owners of record of real estate and all of the electors residing in said territories, and,

WHEREAS, at least two-thirds of the aldermen are of the opinion that it would be for the best interests of the people of the City of Urbana, Illinois, that said territories be annexed to and made a part of the City Limits of said City.

THEREFORE, BE IT ORDAINED BY THE CITY COUNCIL OF THE CITY OF URBANA, ILLINOIS.

SECTION I. That the territories described as follows to-wit:

- Lot Number 1029, in Country Squire Estates,
  - Lot Number 1041, Second Plat, in Country Squire Estates,
  - Lot Number 1042, Second Plat, in Country Squire Estates,
  - Lot Number 1047, Second Plat, in Country Squire Estates,
  - Lot Number 1061, Second Plat, in Country Squire Estates,
  - Lot Number 1063, Second Plat, in Country Squire Estates,
  - Lot Number 1066, Second Plat, in Country Squire Estates,
  - Lot Number 1073, Second Plat, in Country Squire Estates,
- all situated in the County of Champaign, and State of Illinois,

be, and the same are hereby annexed to, and shall hereafter be a part of the City of Urbana, Illinois, and that the corporate limits of said City be, and the same shall be changed so as to include said territories within the corporate limits of said City.

SECTION II. The City Clerk of the City of Urbana, Illinois, shall record with the Recorder of Deeds of the County of Champaign, Illinois, a copy of this ordinance, together with accurate maps of the annexed territories.

ADOPTED by the City Council of the City of Urbana, Illinois, this 18th day of December, 1961.

  
\_\_\_\_\_  
City Clerk

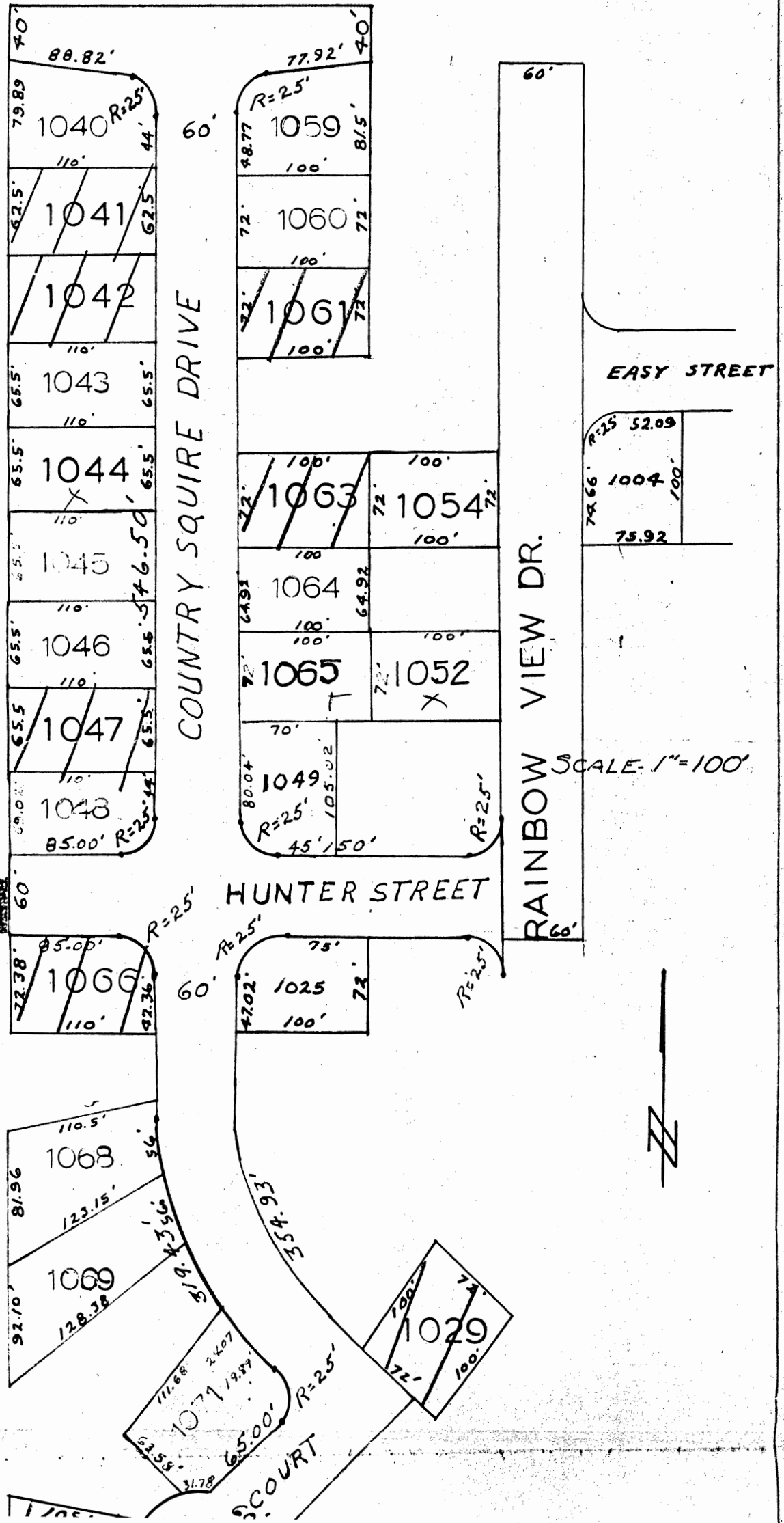
APPROVED by the Mayor this 18th day of December, 1961.

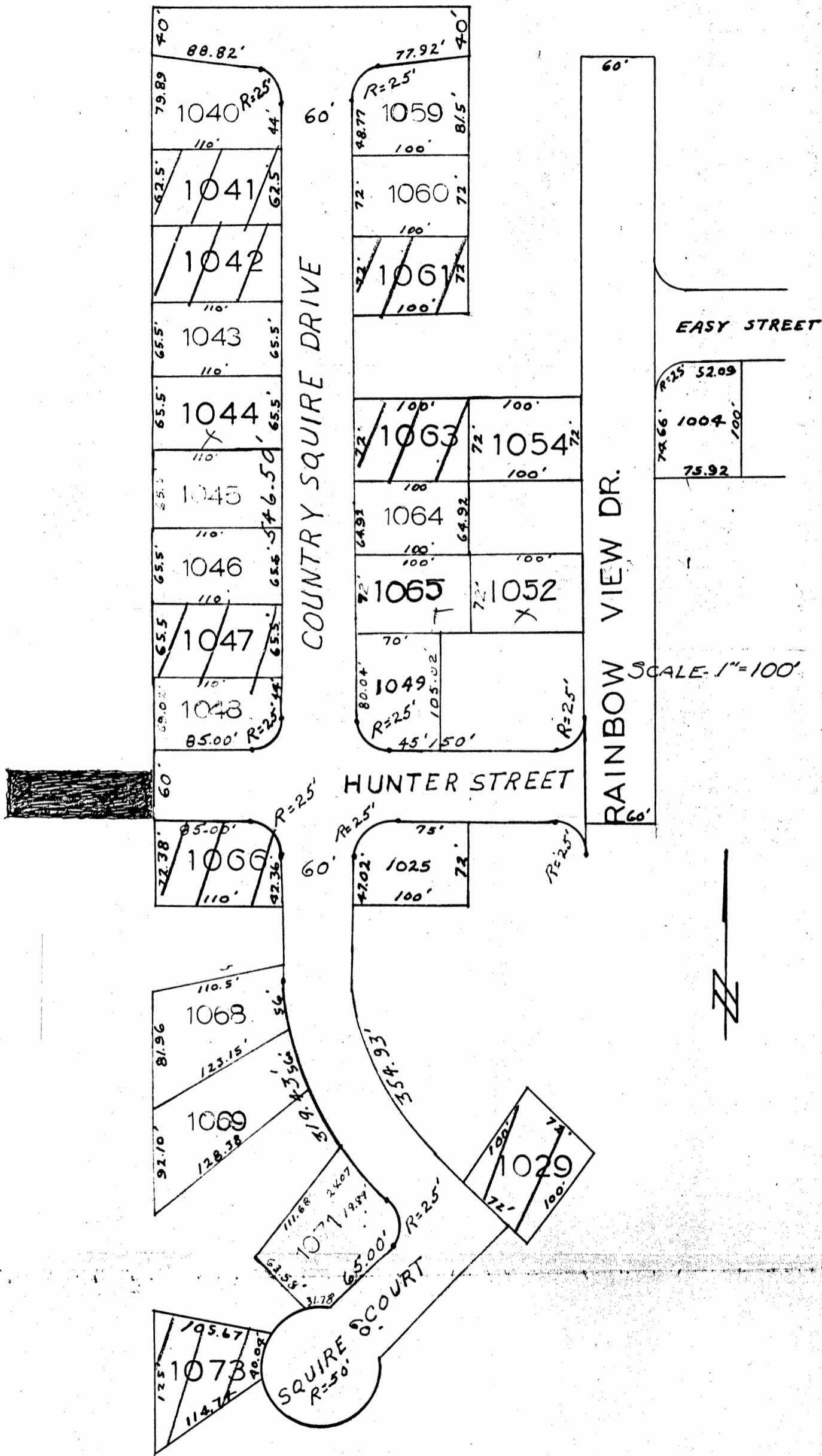
  
\_\_\_\_\_  
Mayor

W/ 6162-51

ANNEXATION PLAT OF  
 LOTS OF COUNTRY SQUIRES ESTATES AND COUNTRY SQUIRES  
~~XX~~  
 ESTATES II SUBDIVISION TO THE COUNTY OF  
 CHAMPAIGN, ILLINOIS, SITUATED IN THE COUNTY OF  
 CHAMPAIGN, STATE OF ILLINOIS.

E. WASHINGTON STREET





BY: W. H. KINCH  
 CIVIL ENGINEER  
 WASHINGTON, DISTRICT OF COLUMBIA

1941