

88

6162-32

X

AN ORDINANCE ANNEXING CERTAIN TERRITORY
TO THE CITY OF URBANA, ILLINOIS

WHEREAS, it appears to the City Council of the City of Urbana, Illinois, that the following unincorporated territory, containing less than sixty (60) acres, is wholly bounded by the City of Urbana, Illinois, a municipal corporation, and,

WHEREAS, at least two-thirds of the aldermen are of the opinion that it would be for the best interests of the people of the city of Urbana, Illinois, that said territory be annexed to and made a part of the City Limits of said City.

NOW, THEREFORE, BE IT ORDAINED BY THE CITY COUNCIL OF THE CITY OF URBANA, ILLINOIS.

SECTION I. That the territory described as follows
to-wit:

Lot Number Six (6) of Ennis Ridge, II, Subdivision,
situated in the County of Champaign, and State of
Illinois,

be, and the same is hereby annexed to, and shall hereafter be a part of the City of Urbana, Illinois, and that the corporate limits of said City be, and the same shall be changed so as to include said territory within the corporate limits of said City.

SECTION II. The City Clerk of the City of Urbana, Illinois, shall record with the Recorder of Deeds of the County of Champaign, Illinois, a copy of this ordinance, together with an accurate map of the annexed territory.

ADOPTED by the City Council of the City of Urbana, Illinois, this 18th day of September, 1961.



City Clerk

APPROVED by the Mayor this 18th day of September, 1961.

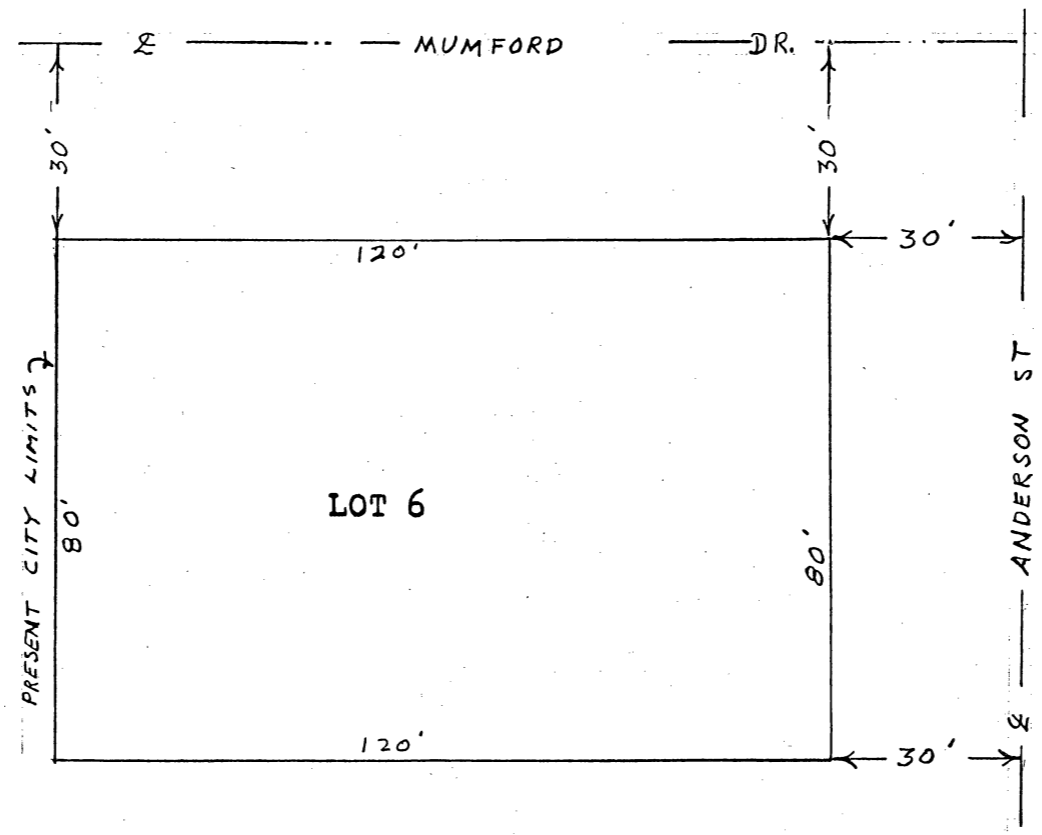


Mayor

9-20-61

W/ 6/62-32

ANNEXATION PLAT OF
LOT 6 OF ENNIS RIDGE II SUBDIVISION, SITUATED IN THE
COUNTY OF CHAMPAIGN, STATE OF ILLINOIS.



SCALE 1"=30'

BY: M. KINCH
CITY ENGINEER
URBANA, ILLINOIS

SEPT. 20, 1961