

X

AN ORDINANCE ANNEXING CERTAIN TERRITORY
TO THE CITY OF URBANA, ILLINOIS

WHEREAS, it appears to the City Council of the City of Urbana, Illinois, that a petition was filed with the City Clerk of the City of Urbana, Illinois on the 18th day of September, A.D. 1961, requesting the annexation of the territory hereinafter described, which said petition was signed under oath by all of the owners of record of real estate and all of the electors residing in said territory, and,

WHEREAS, at least two-thirds of the aldermen are of the opinion that it would be for the best interests of the people of the City of Urbana, Illinois that said territory be annexed to and made a part of the City Limits of said City.

THEREFORE, BE IT ORDAINED BY THE CITY COUNCIL OF THE CITY OF URBANA, ILLINOIS.

SECTION I. That the territory described as follows to-wit:

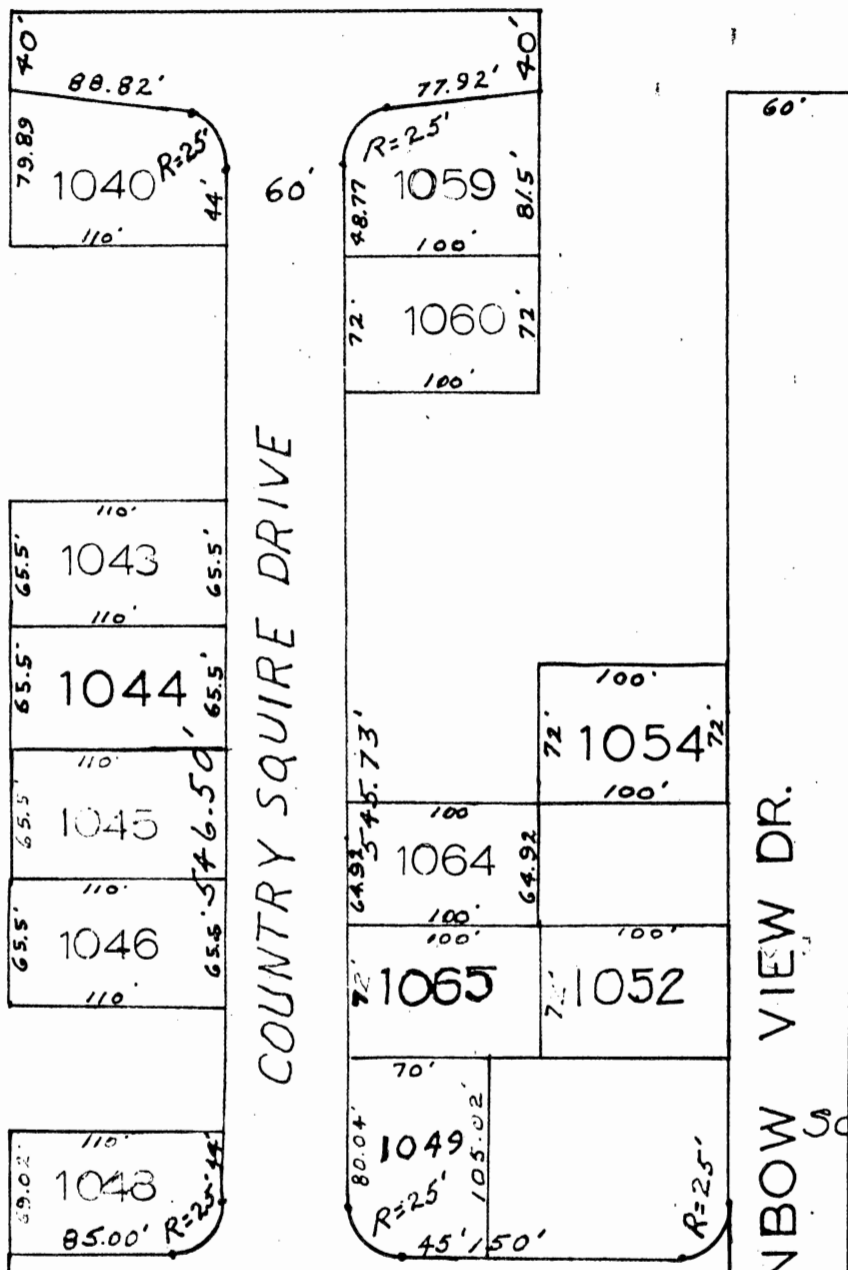
Lot Number 1025, of Country Squires Estates, First Plat, situated in the County of Champaign, and State of Illinois.

9-20-61
N/6162-30

ANNEXATION PLAT OF

CERTAIN STREETS AND CERTAIN LOTS OF COUNTRY SQUIRES
ESTATES II SUBDIVISION TO THE COUNTY OF
CHAMPAIGN, ILLINOIS, SITUATED IN THE COUNTY OF
CHAMPAIGN, STATE OF ILLINOIS.

E. WASHINGTON STREET



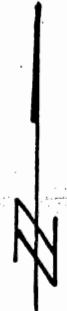
COUNTRY SQUIRE DRIVE

HUNTER STREET

RAINBOW VIEW DR.

PRESENT CITY LIMITS

SCALE - 1" = 100'



COURT

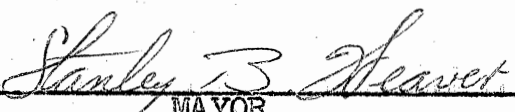
be, and the same is hereby annexed to, and shall hereafter be a part of the City of Urbana, Illinois, and that the corporate limits of said City be, and the same shall be changed so as to include said territory within the corporate limits of said City.

SECTION II. The City Clerk of the City of Urbana, Illinois, shall record with the Recorder of Deeds of the County of Champaign, Illinois, a copy of this ordinance, together with an accurate map of the annexed territory.

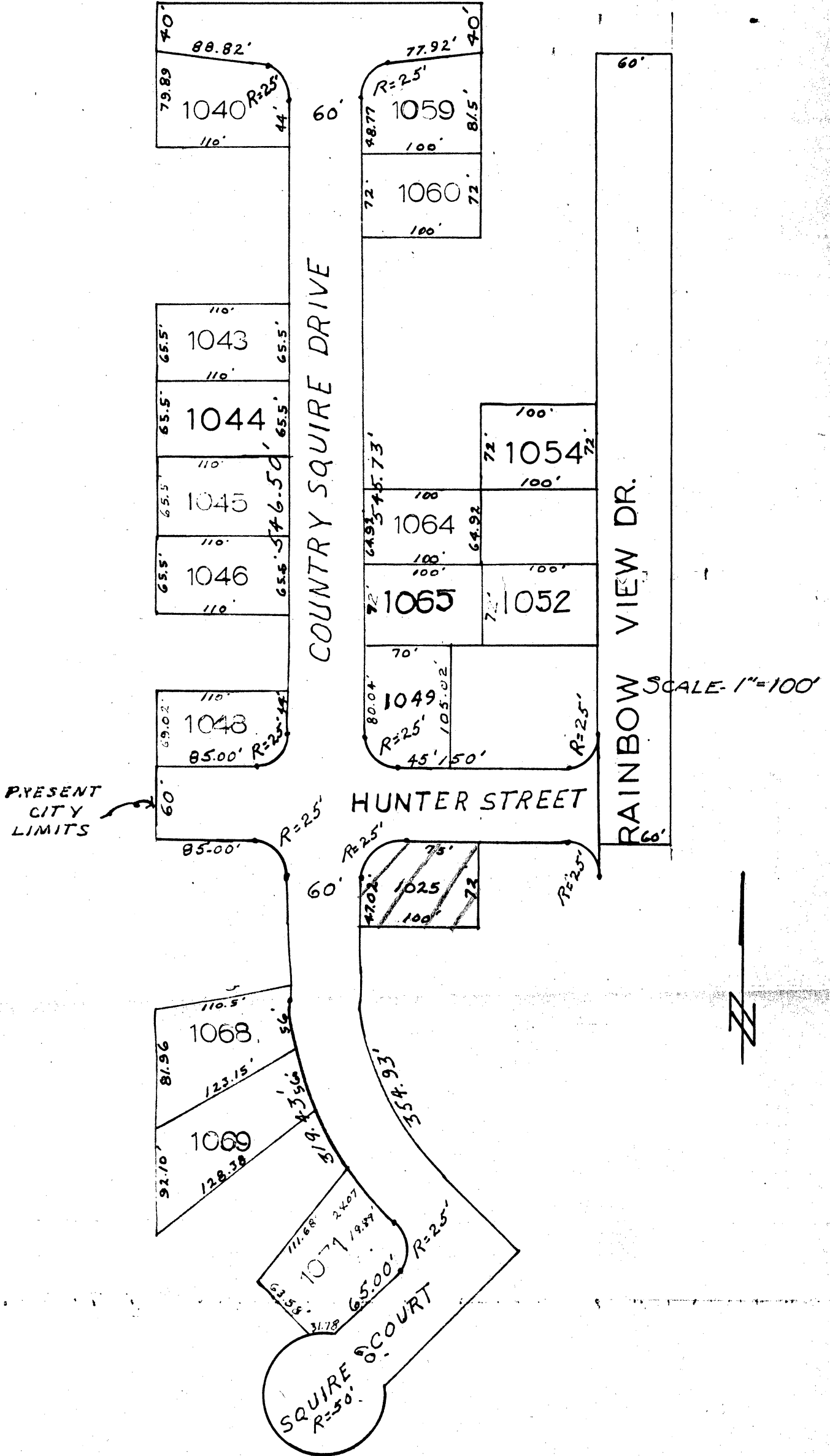
Adopted by the City Council of the City of Urbana, Illinois, this 18th day of September, A.D. 1961.


CITY CLERK

Approved by the Mayor this 18th day of September A.D. 1961.


MAYOR

E. WASHINGTON STREET



BY: M. S. KIRCH
CITY ENGINEER
DEPT. OF PUBLIC WORKS

SEPTEMBER 20, 1961