

County
115
Boni

6061-3

AN ORDINANCE ANNEXING CERTAIN TERRITORY TO THE
CITY OF URBANA, ILLINOIS

WHEREAS, it appears to the City Council of the City of Urbana, Illinois that a petition was filed with the City Clerk of the City of Urbana, Illinois on the 3rd day of May, A.D. 1960 requesting the annexation of the territory hereinafter described, which said petition was signed under oath by ~~all~~^{only} of the owners of record of real estate and ~~all~~^{there being no} of the electors residing in said territory, and

WHEREAS, at least two-thirds of the aldermen are of the opinion that it would be for the best interests of the people of the City of Urbana, Illinois that said territory be annexed to, and made a part of the city limits of said City.

THEREFORE, BE IT ORDAINED BY THE CITY COUNCIL OF THE CITY OF URBANA, ILLINOIS:

SECTION 1. That the territory described as follows, to-wit:

Beginning at the northeast corner of Section 16 Township 19 North Range 9 East of the Third Principal Meridian thence west 470 feet along the North section line of said Section 16 to a point; then south parallel with the east section line of said Section 16 a distance of 583 feet to a point; then east parallel with the north section line of said Section 16, 470 feet to a point in the east line of said Section 16; thence north along said east section line a distance of 583 feet to the point of beginning, situated in the County of Champaign, State of Illinois.

be, and the same is hereby annexed to, and shall hereafter be a part of the City of Urbana, Illinois, and that the corporate limits of said City be, and the same shall be changed so as to include said territory within the corporate limits of said City.

SECTION 2. The City Clerk of the City of Urbana, Illinois, shall record with the Recorder of Deeds of the County of Champaign, Illinois, a copy of this ordinance together with an accurate map of the annexed territory.

Adopted by the City Council of the City of Urbana, Illinois, this 16th day of May A.D. 1951 60

Bess M. Holmes
CITY CLERK

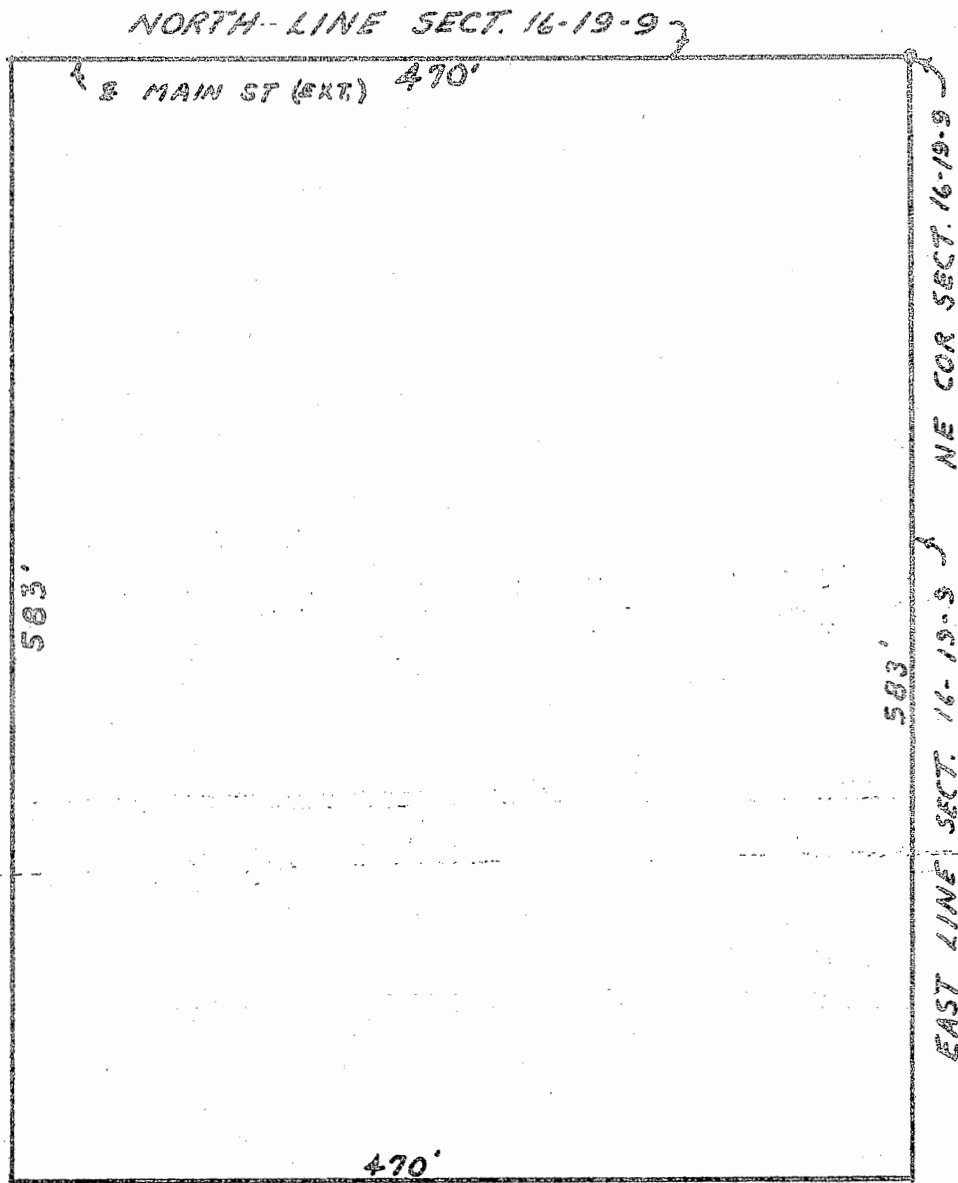
Approved by the Mayor this 16th day of May
A.D. 1951 60

Stanley B. Weaver
MAYOR.

W/6000

ANNEXATION PLAT OF

BEGINNING AT THE NORTHEAST CORNER OF SECTION 16, TOWNSHIP 19 NORTH, RANGE 9 EAST OF THE THIRD PRINCIPAL MERIDIAN, THENCE WEST 470 FEET ALONG THE NORTH LINE OF SAID SECTION 16 TO A POINT; THENCE SOUTH PARALLEL WITH THE EAST SECTION LINE OF SAID SECTION 16 A DISTANCE OF 583 FEET TO A POINT; THENCE EAST PARALLEL WITH THE NORTH SECTION LINE OF SAID SECTION 16, 470 FEET TO A POINT IN THE EAST LINE OF SAID SECTION 16; THENCE NORTH ALONG THE EAST LINE OF SAID SECTION 16 A DISTANCE OF 583 FEET TO THE POINT OF BEGINNING, SITUATED IN THE COUNTY OF CHAMPAIGN, STATE OF ILLINOIS.



BY: M. H. KINCH
CITY ENGINEER
URBANA, ILLINOIS

MAY 20, 1960

SCALE 1" = 100'

STATE OF ILLINOIS }
COUNTY OF CHAMPAIGN }

SS.

I, BESS M. HOLMES, City Clerk of the City of Urbana, Illinois, and keeper of the records, files and seal of said City, do hereby certify that the foregoing is a true and exact copy of an ordinance entitled, "An Ordinance Annexing Certain Territory to the City of Urbana, Illinois", adopted by the City Council of the City of Urbana, Illinois, on the 16th day of May A. D. 1960, as shown on the records and files in my office remaining.

Given under my hand and seal of said City of Urbana, Illinois, this 17th day of May A. D. 1960.



Bess M. Holmes
CITY CLERK