

AN ORDINANCE ANNEXING CERTAIN TERRITORY
TO THE CITY OF URBANA, ILLINOIS.

W H E R E A S, it appears to the City Council of the City of Urbana, Illinois, that a petition was filed with the City Clerk of the City of Urbana, Illinois, on the 28th day of May, A.D. 1959., requesting the annexation of the territory hereinafter described, which said petition was signed under oath by all of the owners of record of real estate and all of the electors residing in said territory, and,

W H E R E A S, at least two-thirds of the aldermen are of the opinion that it would be for the best interests of the people of the City of Urbana, Illinois, that said territory be annexed to and made a part of the city limits of said City.

THERE, ^{file} BE IT ORDAINED BY THE CITY COUNCIL OF THE CITY OF URBANA, ILLINOIS.

SECTION 1. That the territory described as follows,
to-wit:

Lots One (1) to Fifty-eight (58), inclusive, in ENNIS RIDGE FIRST SUBDIVISION, in Champaign County, Illinois, as per plat recorded in Plat Book "L" at page 119 in the Recorder's Office of said County, also described as:

Commencing at the northeast corner of Lot One (1) of said subdivision thence south along the east line of said subdivision to the southeast corner of Lot Forty-nine (49) of said subdivision, which point is also the southeast corner of the northeast quarter of the northeast quarter of the southeast quarter of Section Twenty (20), Township Nineteen (19) North, Range Nine (9) East of the Third Principal Meridian in said County, thence west along the south line of said subdivision to the southwest corner of Lot fifty-eight (58) of said subdivision, thence north six hundred seventy-six and twenty-five one hundredths (676.25) feet to a point in the west line of Lot (20) of said subdivision, thence northeasterly along this northwest line of lots 20, 19, 18, 17, 16 and 15 to a point in the north line of Lot fifteen (15) of said subdivision, which is five hundred sixty-three and sixty-three one hundredths (563.63) feet west of the place of beginning, thence east to the place of beginning, situated in the County of Champaign, and State of Illinois.,

be, and the same is hereby annexed to, and shall hereafter be a part of the City of Urbana, Illinois, and that the corporate limits of said City be, and the same shall be changed so as to include said territory within the corporate limits of said City.

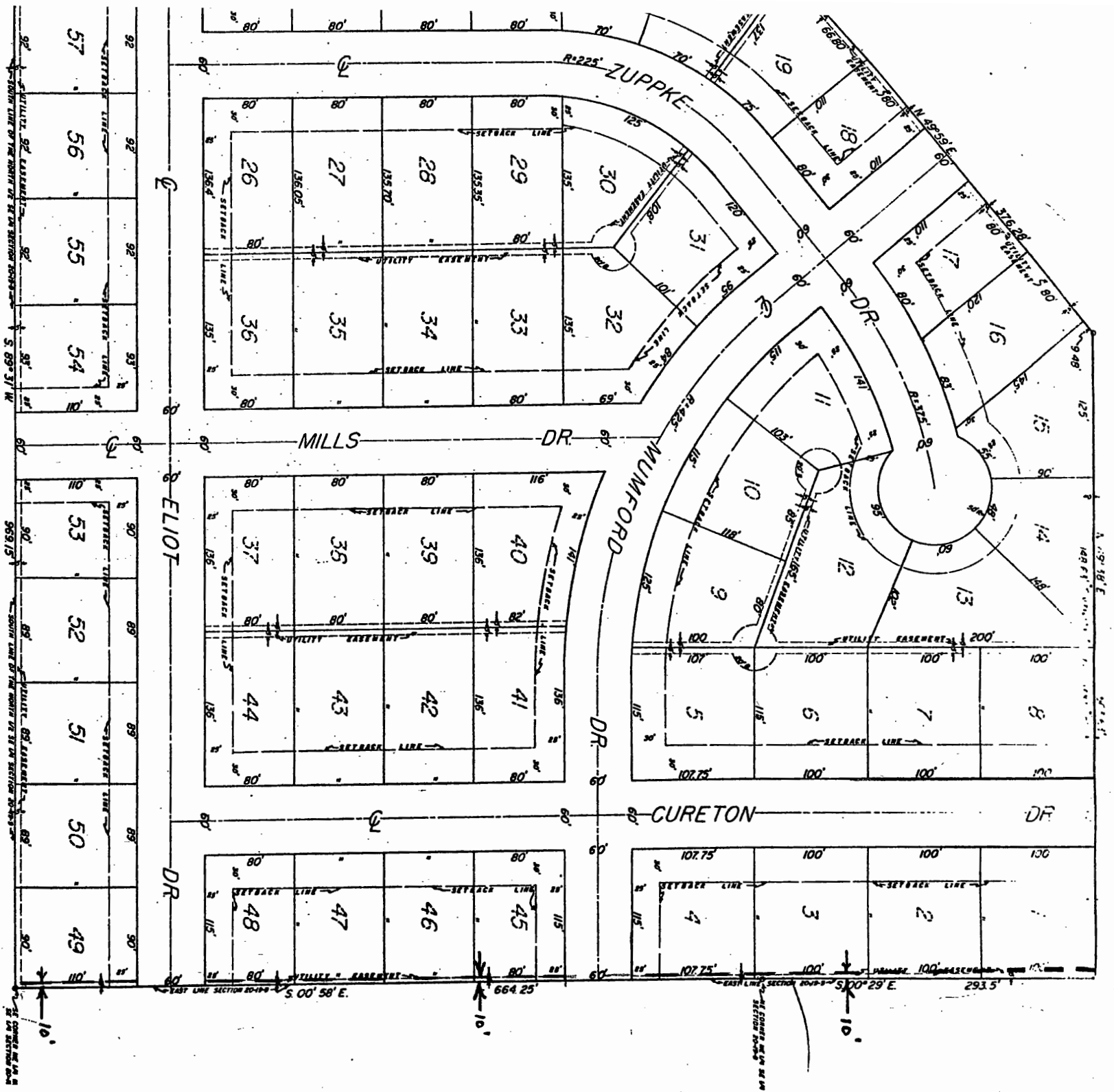
SECTION 2. The City Clerk of the City of Urbana, Illinois, shall record with the Recorder of Deeds of the County of Champaign, Illinois, a copy of this ordinance together with an accurate map of the annexed territory.

Adopted by the City Council of the City of Urbana, Illinois, this 10th day of June, A.D. 1959.

Bess D. Lucas
City Clerk.

Approved by the Mayor this 10th day of June, A.D. 1959.

Stanley B. Weaver
Mayor.



10'

10'

10'

92'

92'

92'

92'

92'

92'

92'

92'

92'

92'

92'

92'

92'

92'

92'

92'

92'

92'

92'

92'

92'

92'

92'

92'

92'

92'

92'

92'

92'

92'

92'

92'

92'

92'

92'

92'

92'

92'

92'

92'

92'

92'

92'

92'

92'

92'

92'

92'

92'

92'

92'

92'

92'

92'

92'

92'

92'

92'

92'

92'

92'

92'

92'

92'

92'

92'

92'

92'

92'

92'

92'

92'

92'

92'

92'

92'

92'

92'

92'

92'

92'

92'

92'

92'

92'

92'

92'

92'

92'

92'

92'

92'

92'

92'

92'

92'

92'

92'

92'

92'

92'

92'

92'

92'

92'

92'

92'

92'

92'

92'

92'

92'

92'

92'

92'

92'

92'

92'

92'

92'

92'

92'

92'

92'

92'

92'

92'

92'

92'

92'

92'

92'

92'

92'

92'

92'

92'

92'

92'

92'

92'

92'

92'

92'

92'

92'

92'

92'

92'

92'

92'

92'

92'

92'

92'

92'

92'

92'

92'

92'

92'

92'

92'

92'

92'

92'

92'

92'

92'

92'

92'

92'

92'

92'

92'

92'

92'

92'

92'

92'

92'

92'

92'

92'

92'

92'

92'

92'

92'

92'

92'

92'

92'

92'

92'

92'

92'

92'

92'

92'

92'

92'

92'

92'

92'

92'

92'

92'

92'

92'

92'

92'

92'

92'

92'

92'

92'

92'

92'

92'

92'

92'

92'

92'

92'

92'

92'

92'

92'

92'

92'

92'

92'

92'

92'

92'

92'

92'

92'

92'

92'

92'

92'

92'

92'

92'

92'

92'

92'

92'

92'

92'

92'

92'

92'

92'

92'

92'

92'

92'

92'

92'

92'

92'

92'

92'

92'

92'

92'

92'

92'

92'

92'

92'

92'

ENNIS RIDGE 1ST SUBDIVISION

BEGINNING AT THE SE CORNER OF THE NE 1/4 NE 1/4 SE 1/4 SECTION 20, TWP 19 N, RANGE 9 E OF THE 3RD P.M., THENCE S 89° 31' W 969.15' ALONG THE SOUTH LINE OF THE N 1/2 OF THE SE 1/4 OF SAID SECTION 20-19-9, THENCE N 00° 38' W 676.25', THENCE N 68° 25' E 120.51', THENCE N 49° 59' E 376.28', THENCE N 89° 38' E 563.63' TO THE EAST LINE OF SAID SECTION 20-19-9, THENCE S 00° 29' E 293.5' TO THE NE CORNER OF THE NE 1/4 SE 1/4 OF SAID SECTION 20-19-9, THENCE S 00° 58' E 664.25' ALONG THE EAST LINE OF SAID SECTION 20-19-9 TO THE POINT OF BEGINNING

APPROVED
DATE March 1, 1957

BY THE
PLAN COMMISSION
OF THE
CITY OF URBANA, ILLINOIS

Ernest Phillips
CHAIRMAN

APPROVED
DATE March 2nd 1957

BY THE
CITY COUNCIL
OF THE
CITY OF URBANA, ILLINOIS

Glenn E. Chapman
MAYOR
Sam M. Thomas
CLERK

APPROVED
DATE March 7, 1957

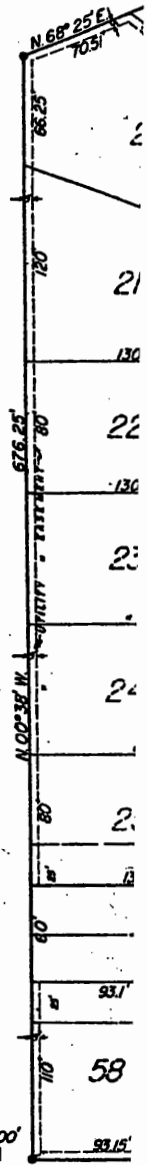
BY THE PLAT COMMITTEE
OF THE
BOARD OF SUPERVISORS
OF
CHAMPAIGN COUNTY, ILL.

Robert King
Thomas R. White
John J. Jones
Geo. F. Schaffer



○ DENOTES SET IRON PIPE
○ DENOTES FOUND IRON PIPE

SCALE



STATE OF ILLINOIS
COUNTY OF CHAMPAIGN ss
I, M.H. KINCH STATE REGISTERED LAND SURVEYOR
NO. 358, DO HEREBY CERTIFY THAT I MADE THE ABOVE
SURVEY, THAT I SET OR FOUND THE MONUMENTS AS
SHOWN, AND THAT I FOUND NO ENCROACHMENTS.

M.H. Kinch
SURVEYOR