

15- Done

5556-33

PENNSYLVANIA NORTH TO FAIRLAWN VILLAGE
BETWEEN VINE & ANDERSON

AN ORDINANCE ANNEXING CERTAIN TERRITORY TO
THE CITY OF URBANA, ILLINOIS

WHEREAS, it is provided in Article 7-11 of the Cities and Villages Act of the State of Illinois that whenever any unincorporated territory containing sixty (60) acres or less, is wholly bounded by a municipality, such territory may then be annexed to said municipality by the passage of an ordinance to that effect, and

WHEREAS, the hereinafter described territory is wholly bounded by the City of Urbana, a municipality located in the County of Champaign and State of Illinois,

THEREFORE, BE IT ORDAINED BY THE CITY COUNCIL OF THE CITY OF URBANA, ILLINOIS:

1. That the following described territory, to-wit:

Commencing at a point on the South line of Fairlawn Village One Hundred Thirty-four feet (134') West of the East line of Section Seventeen (17), Township Nineteen (19) North, Range Nine (9) East of the Third Principal Meridian, thence West to a point One Hundred Eighty-three feet (183') East of the West line of the East Half of the Southeast Quarter of said Section Seventeen (17), thence South to the center line of Pennsylvania Avenue, thence East along the center line of Pennsylvania Avenue to a point One Hundred Thirty-four (134) feet West of the East line of said Section Seventeen (17), thence North to the place of beginning, all situated in the County of Champaign and State of Illinois,

being wholly surrounded by the City of Urbana, a municipal corporation, organized and existing under the laws of the State of Illinois, is hereby annexed to said City of Urbana.

Adopted by the City Council of the City of Urbana, Illinois, this 19th day of December, A. D. 1955.

Bess M. Holmes
City Clerk

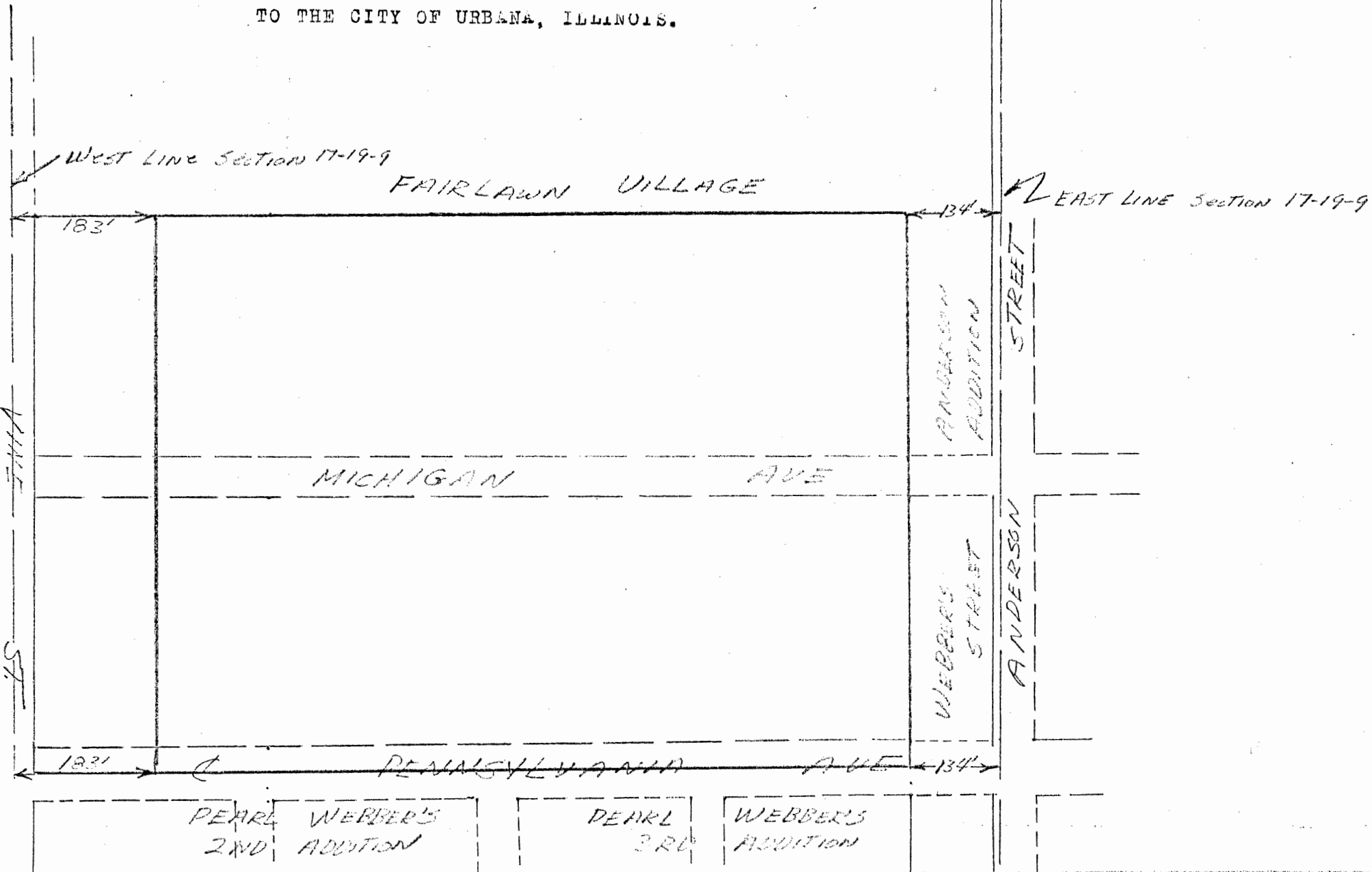
Approved by the Mayor this 19th day of December, A. D. 1955.

Glen E. Chapman
Mayor

12-20-55

5556-33

ANNEXATION PLAT
TO THE CITY OF URBANA, ILLINOIS.



BY: M.H. Kinch,
Engineer for
the City

Date: December 20,
1955.

FILED
DEC 21 1955
17-19-9