

Public Meeting
Thursday October 13, 2016

Agenda

1. Overview of Corridor Study
2. Summary of Existing Condition & Projections
 - Environmental Assessment
 - Facilities and Services
 - Land Use and Future Development
 - Transportation
3. Public Input
 - How do you use Curtis Road?
 - Curtis Road Strengths, Weaknesses, and Opportunities?

Agenda

1. Overview of Corridor Study
2. Summary of Existing Condition & Projections
 - Environmental Assessment
 - Facilities and Services
 - Land Use and Future Development
 - Transportation
3. Public Input
 - How do you use Curtis Road?
 - Curtis Road Strengths, Weaknesses, and Opportunities?

Overview

- **1997**- CUUATS prepared a Curtis Road/I-57 Scoping Study to identify the feasibility for improving Curtis Road from Staley Road in Champaign to IL 130 in Urbana as a major east-west access route for the southern portion of the urbanized area in conjunction with the proposed interchange at Curtis Road and I-57.
- **2000** - The Preliminary South Farms Phasing Plan extends from Windsor Road south to Airport Road and east to Philo Road.
- **2008** - A new interchange at Interstate 57 and Curtis Road was opened for operation.
- **2010** - Curtis Road between Interstate 57 and Prospect Avenue was converted to a 4-lane urban section.

Overview



<https://fhwaapps.fhwa.dot.gov/planworks/Home>

\$300,000 Lead Adopter Incentive Award

Plan Works is a web resource that supports collaborative decision-making in transportation planning and project development. PlanWorks is built around key decision points suggesting when and how to engage cross-disciplinary partners and stakeholder groups.

4 Main components:

1. Decision Guide: Corridor Planning
2. Assessments: Partner Collaboration
3. Applications: Natural Environment and Implementing Eco-Logical
4. Resource Library

Overview

PlanWorks Decision Guide for Corridor Planning



Corridor Planning								
 COR-1 Approve Scope of Corridor Planning Process	COR-2 Approve Problem Statements and Opportunities	COR-3 Approve Goals for the Corridor	COR-4 Reach Consensus on Scope of Environmental Review and Analysis	COR-5 Approve Evaluation Criteria, Methods and Measures	COR-6 Approve Range of Solution Sets	COR-7 Adopt Preferred Solution Set	COR-8 Approve Evaluation Criteria, Methods and Measures for Prioritization of Projects	COR-9 Adopt Priorities for Implementation

Outcome: Identify collective preferences for future projects and accommodations for all transportation modes

This study does *not*:

- Come with any project funding
- Guarantee project implementation

Overview

Public Involvement:











1. Existing and Projected Conditions - discuss strengths, weaknesses, goals
2. Scenario Planning - discussing potential future scenarios for corridor
3. Scenario Analysis - review analysis of different scenarios, provide input
4. Draft Report - provide input on full draft corridor report

		2016						2017											
		1	2	3	4	5	6	7	8	9	10	11	12	13	14	15	16	17	18
		Jul	Aug	Sep	Oct	Nov	Dec	Jan	Feb	Mar	Apr	May	Jun	Jul	Aug	Sep	Oct	Nov	Dec
Public	Meetings				▲		▲					▲				▲			
Environmental Working Group	Meetings			●		●						●				●			
Steering Committee	Meetings		■		■		■	■				■		■		■		■	
PlanWorks	Environmental Inputs	Establish an Environmental Working Group		Characterize Resource Status and Integrate Natural Environment Plans		Create Regional Ecosystem Framework				Establish and Prioritize Ecological Actions				Develop Crediting Strategy (if relevant)					
	PlanWorks Key Decision Points	Approve Scope of Corridor Study Process		Approve Problem Statements and Opportunities		Approve Range of Solution Sets				Adopt Preferred Solution Set				Adopt Priorities for Implementation					
		Reach Consensus on the Scope of Environmental Review and Analysis		Approve Goals for Corridor						Approve Evaluation Criteria, Methods, and Measures for Project Prioritization									
Corridor Study Phases		Existing and Projected Conditions		Identify Goals, Objectives, and Evaluation Criteria		Identify Scenarios based on Goals and Objectives				Identify Preferred Scenario				Draft Corridor Study Report		Final Approval			

Overview

Political Boundaries

Legend

- | | | |
|---|--|---|
|  | Savoy Village Hall | Townships |
|  | City of Urbana |  Urbana |
|  | City of Champaign |  Cunningham |
|  | Village of Savoy |  Champaign |
|  | Urbana ETJ |  City of Champaign |
|  | Champaign ETJ |  Philo |
|  | Savoy ETJ |  Tolono |
|  | University of Illinois Master Plan Boundary (2012) | |
|  | Major Roads | |
|  | Study Area | |



Overview

Curtis Road Corridor Study Steering Committee

Agencies	Departments
IDOT - District 5	Planning and Services
IDOT - Central Office	Metro Planning
FHWA	Transportation Planning
City of Urbana	Public Works and Community Development
University of Illinois	College of ACES and Facilities and Services
Village of Savoy	Village Administration and Public Works
City of Champaign	Public Works and Planning & Development
Urbana Township	Highway Commissioner
Champaign Township	Highway Commissioner
Champaign County	County Engineer
C-U MTD	Operations
CUUATS	Transportation Planning and Engineering

Agenda

1. Overview of Corridor Study
2. Summary of Existing Condition & Projections
 - Environmental Assessment
 - Facilities and Services
 - Land Use and Future Development
 - Transportation
3. Public Input
 - How do you use Curtis Road?
 - Curtis Road Strengths, Weaknesses, and Opportunities?

Environmental Assessment

Physical Setting

Topography

Soils

Hydrology (waterways, wetlands, floodplains)

Drainage

Natural Areas and Wildlife

Environment

Air Quality

Water Quality

Light Pollution

Noise Pollution

Special Waste

Cultural Resources

Environmental Working Group

IDOT District 5

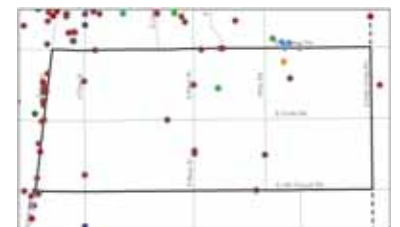
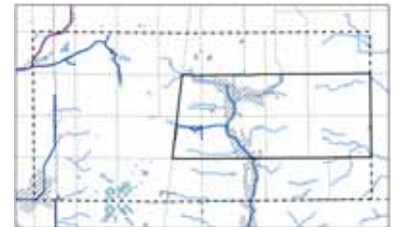
Illinois Natural History Survey

Illinois State Archeological Survey

Illinois State Geological Survey

Champaign County Soil & Water Conservation District

University of Illinois



Agenda

1. Overview of Corridor Study
2. Summary of Existing Condition & Projections
 - Environmental Assessment
 - Facilities and Services
 - Land Use and Future Development
 - Transportation
3. Public Input
 - How do you use Curtis Road?
 - Curtis Road Strengths, Weaknesses, and Opportunities?

Facilities and Services

Fire Protection

Police

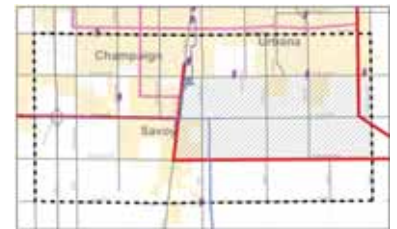
High Speed Internet

Power and Gas

Sanitary and Storm Sewer

Health Facilities

Schools and Districts



Agenda

1. Overview of Corridor Study
2. Summary of Existing Condition & Projections
 - Environmental Assessment
 - Facilities and Services
 - Land Use and Future Development
 - Transportation
3. Public Input
 - How do you use Curtis Road?
 - Curtis Road Strengths, Weaknesses, and Opportunities?

1973

Legend

- Single family residential
- Multi-family residential
- Commercial development
- University research & education facility



- Green space
- Cultural/institution development
- Utility/infrastructure

1988

Swine Research Center

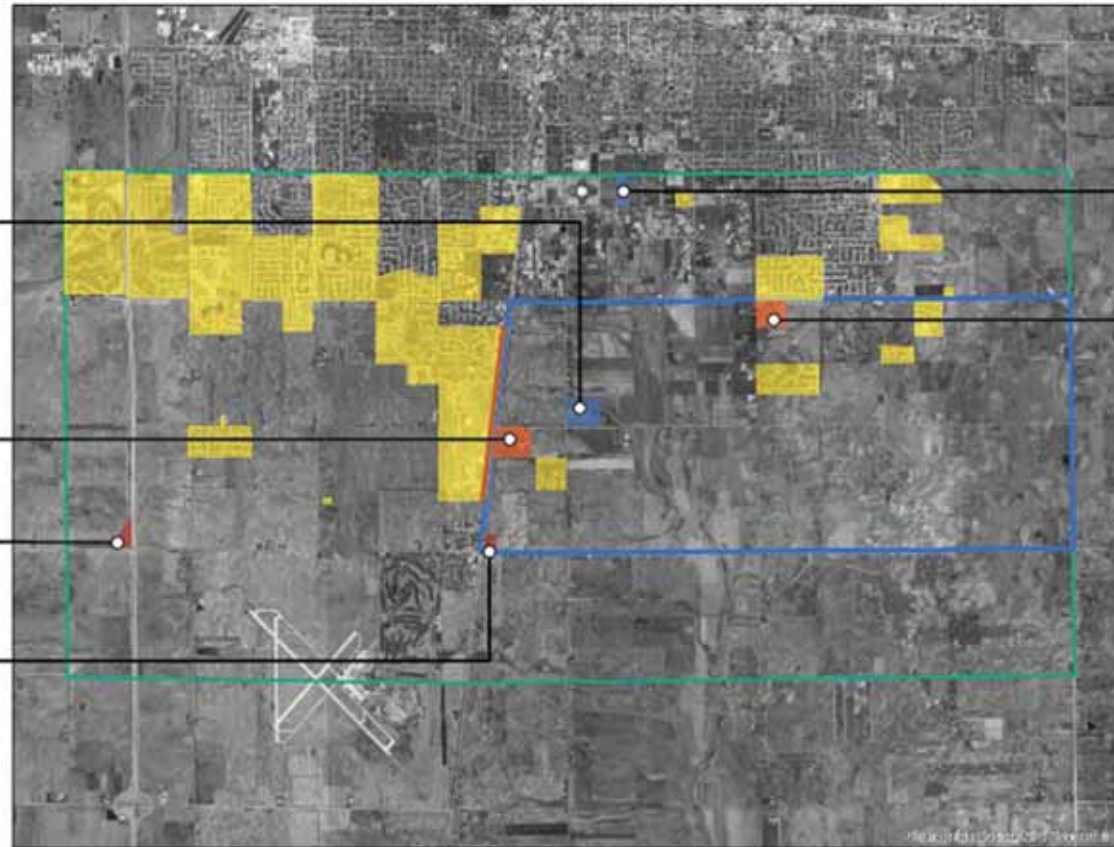
Winfield Village

Jesse Heating & Air Conditioning

Savoy Storage

Illinois Field

Clark-Lindsey Retirement Community



1 inch = 5,011 foot

Legend

- New single family residential development
- New multi family residential development
- New commercial development
- New University research & education facility
- New green space
- New cultural development/institution
- New utility/infrastructure

2002

- University Research & Education Center
- University Research Park
- Agricultural business
- Utility Infrastructure
- Parkview Senior Apartments
- Walmart Supercenter

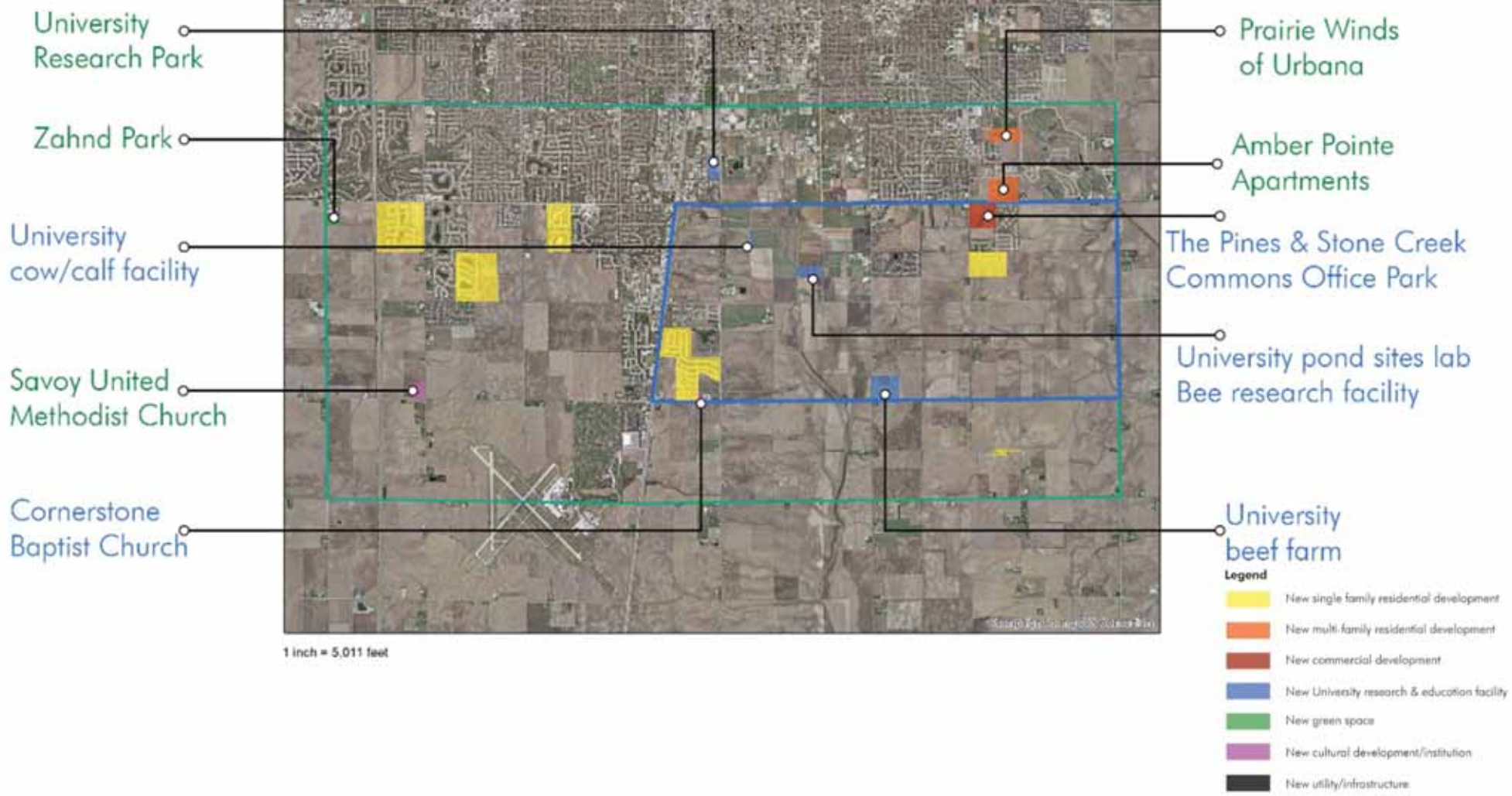


- University sports facility
- Warehouse/dairy farm
- Meadowbrook Park
- University cow/calf facility
- The Place at 117

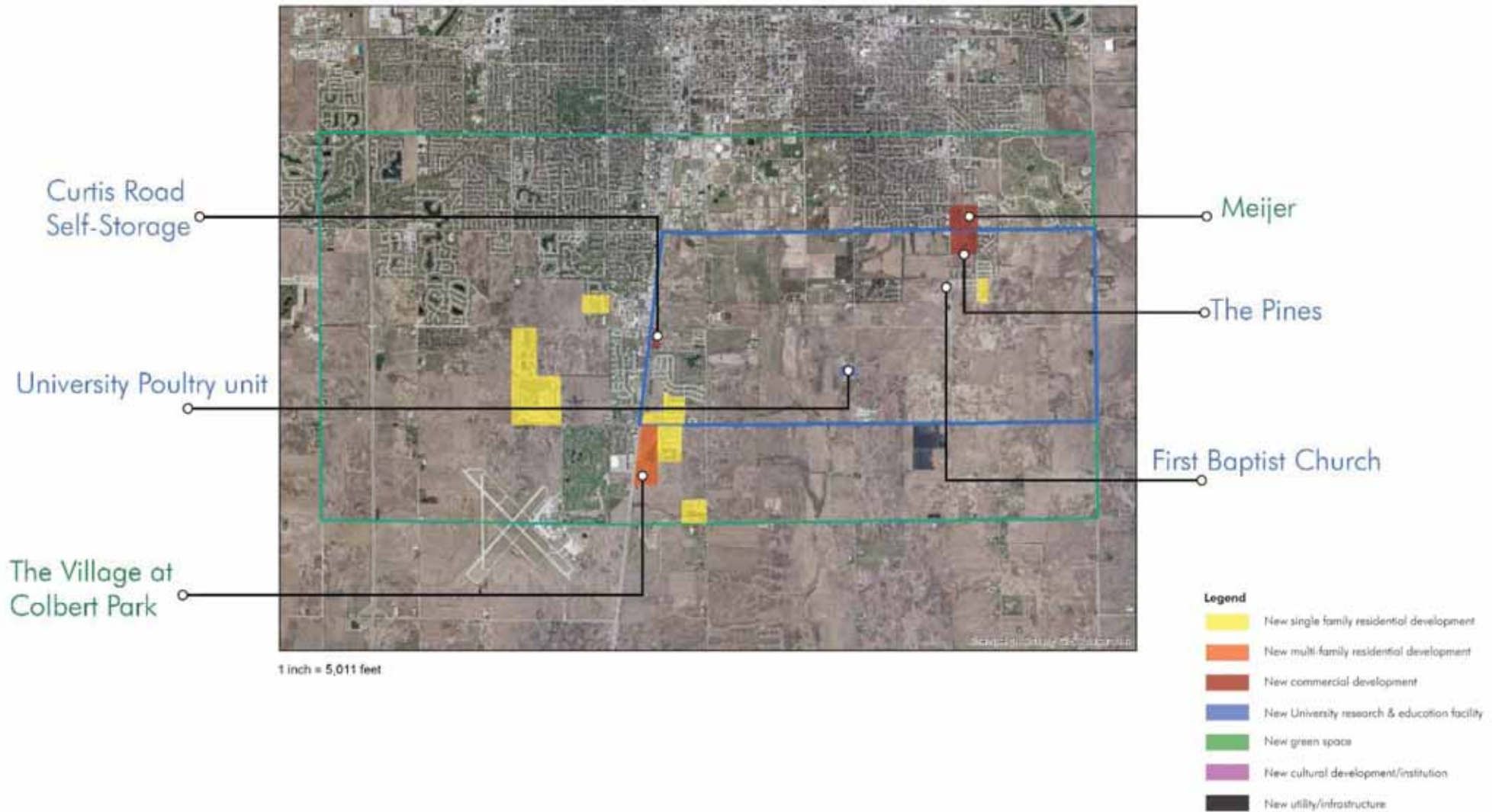
Legend

Yellow	New single family residential development
Orange	New multi family residential development
Red	New commercial development
Blue	New University research & education facility
Green	New green space
Purple	New cultural development/institution
Black	New utility/infrastructure

2005



2008



2011

Champaign Fire Department

Stephens Family YMCA

Windsor West Apartments

University ACES Information Cent

University research facility

University Energy Biosciences Institut Field Research Cer



1 inch = 5,011 feet

Legend

- New single family residential development
- New multi-family residential development
- New commercial development
- New University research & education facility
- New green space
- New cultural development/institution
- New utility/infrastructure

2014

University
Research Park

S 4th Street

Carrie Busey
Elementary School

University research facility



1 inch = 5,011 feet

Legend

- New single family residential development
- New multi-family residential development
- New commercial development
- New University research & education facility
- New green space
- New cultural development/institution
- New utility/infrastructure

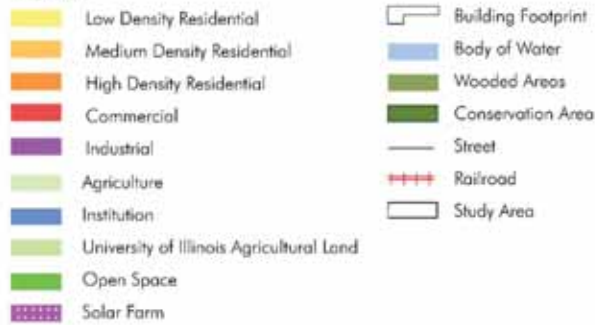
2016



- Legend**
- New single family residential development
 - New multi-family residential development
 - New commercial development
 - New University research & education facility
 - New green space
 - New cultural development/institution
 - New utility/infrastructure

Existing Land Use

Legend



Property Ownership

Legend



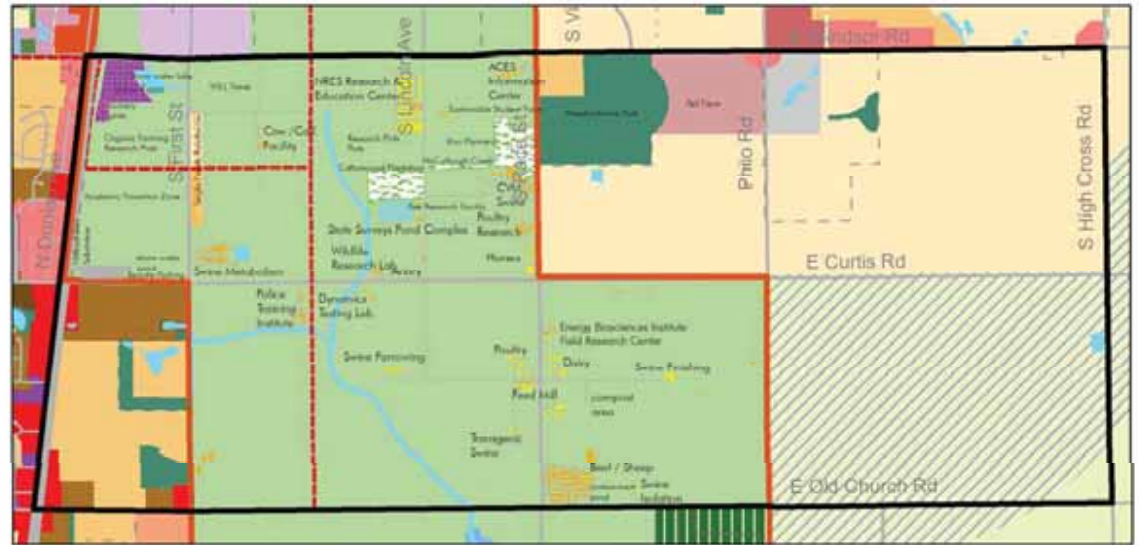
Data Source: Tax Assessors Office record obtained from Champaign County GIS Consortium



Study Area Future Land Use

Legend

- Central Business
- Community Business/ Office Commercial
- Regional Business
- Mixed Residential
- Single Family/ Low Density Residential
- Multifamily/ Medium Density Residential
- High Density Residential
- Rural Residential
- Light Industrial
- Heavy Industrial
- Institutional
- Park/ Open Space
- Future Planning Area
- Employment Center
- Corporate Limits
- Study Area Future University Building Footprint
- Study Area Existing University Building Footprint
- University Research Park
- University Agricultural Land
- Study Area University Solar Farm
- Study Area University Remote Parking Site
- Primarily Agriculture (Best Prime Farmland)
- Primarily Conservation
- Riparian
- Woodland
- Body of water
- The University Master Plan Boundary (2012)
- Intergovernmental Boundary Agreements
- Major Roads
- Study Area



- Champaign Tomorrow- Comprehensive Plan adopted by City Council in 2011
- Urbana Comprehensive Plan adopted by Urbana City Council in 2005
- Village of Savoy Comprehensive Plan adopted by the Village in 2009
- Champaign County Land Resource Management Plan adopted by Champaign County Board in 2010
- University of Illinois Campus Master Plan Update adopted in 2007, updated in 2012
- University of Illinois Utilities Master Plan approved in September 2015

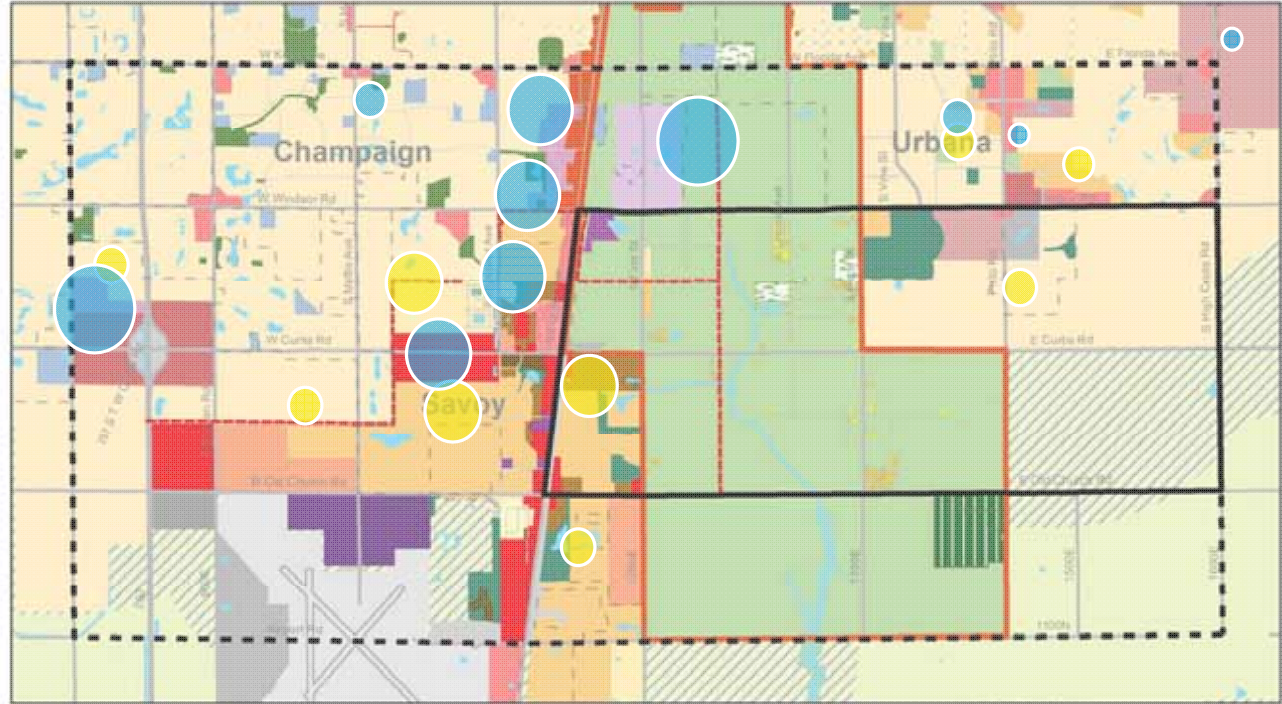
Population and Employment Projections

Population					
	Census 1990	Census 2010	Change 1990-2010	L RTP Projection for 2040	Change 2010-2040
Study Area	2,269	4,801	112%	6,250	30%

Area of Influence	26,437	30,641	16%	39,890	30%
-------------------	--------	--------	-----	--------	-----

Employment			
	Business Analyst 2010	L RTP Projection for 2040	Change 2010-2040
Study Area	778	1,227	58%

Area of Influence	14,532	24,396	68%
-------------------	--------	--------	-----



- Significant Population Growth 2010-2040
- Significant Employment Growth 2010-2040

Agenda

1. Overview of Corridor Study
2. Summary of Existing Condition & Projections
 - Environmental Assessment
 - Facilities and Services
 - Land Use and Future Development
 - Transportation
3. Public Input
 - How do you use Curtis Road?
 - Curtis Road Strengths, Weaknesses, and Opportunities?



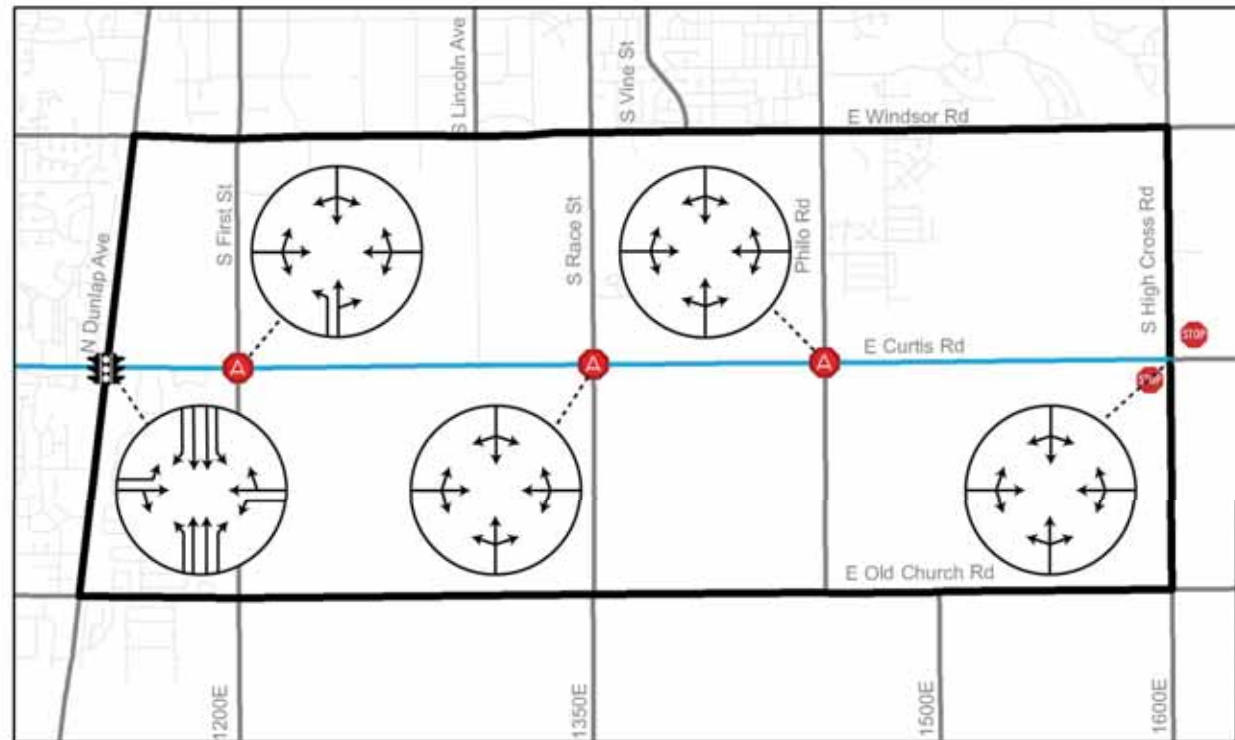
Transportation

Intersection Controls & Lane Configuration

Legend

Intersection Control Type

-  All Way Stop
-  Signalized
-  Two-Way Stop Sign
-  Streets
-  Major Roads
-  Study Area



Transportation

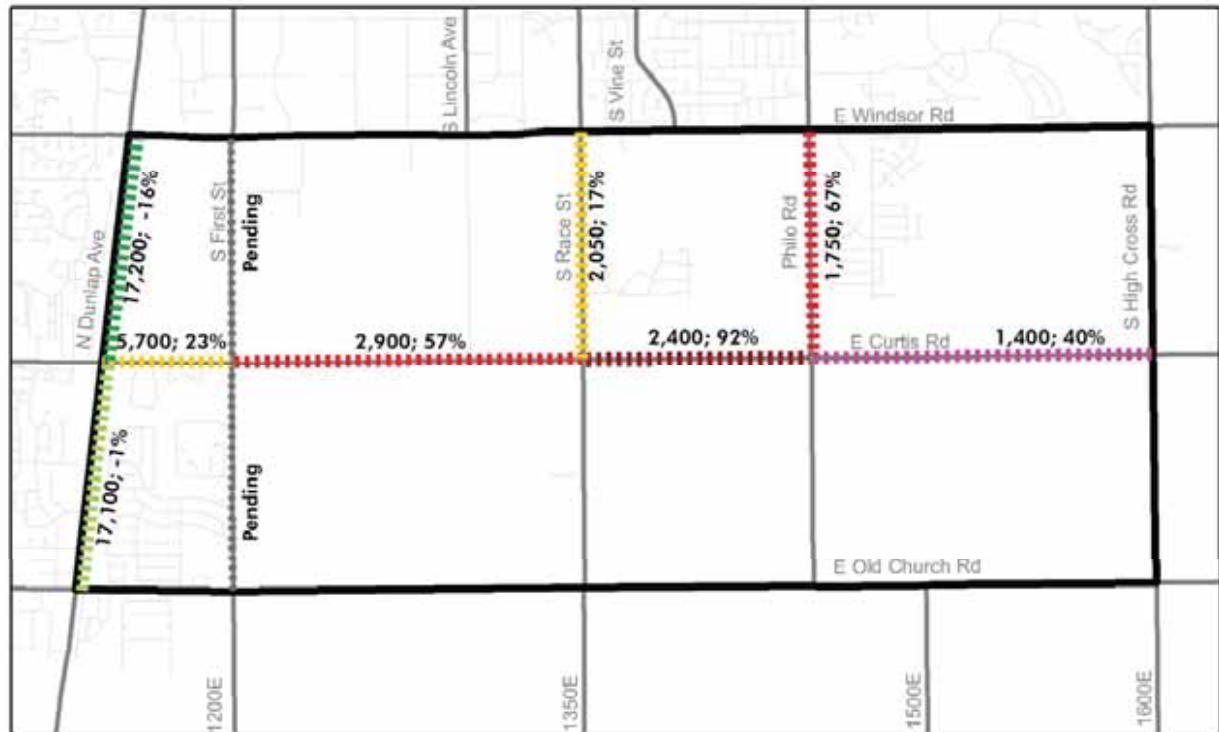
Average Daily Traffic 2006-2016

Legend

Percentage Change 2006-2016



2,900; 57%: Segment average daily traffic in 2016 is 2,900; increased 57% from 2006.



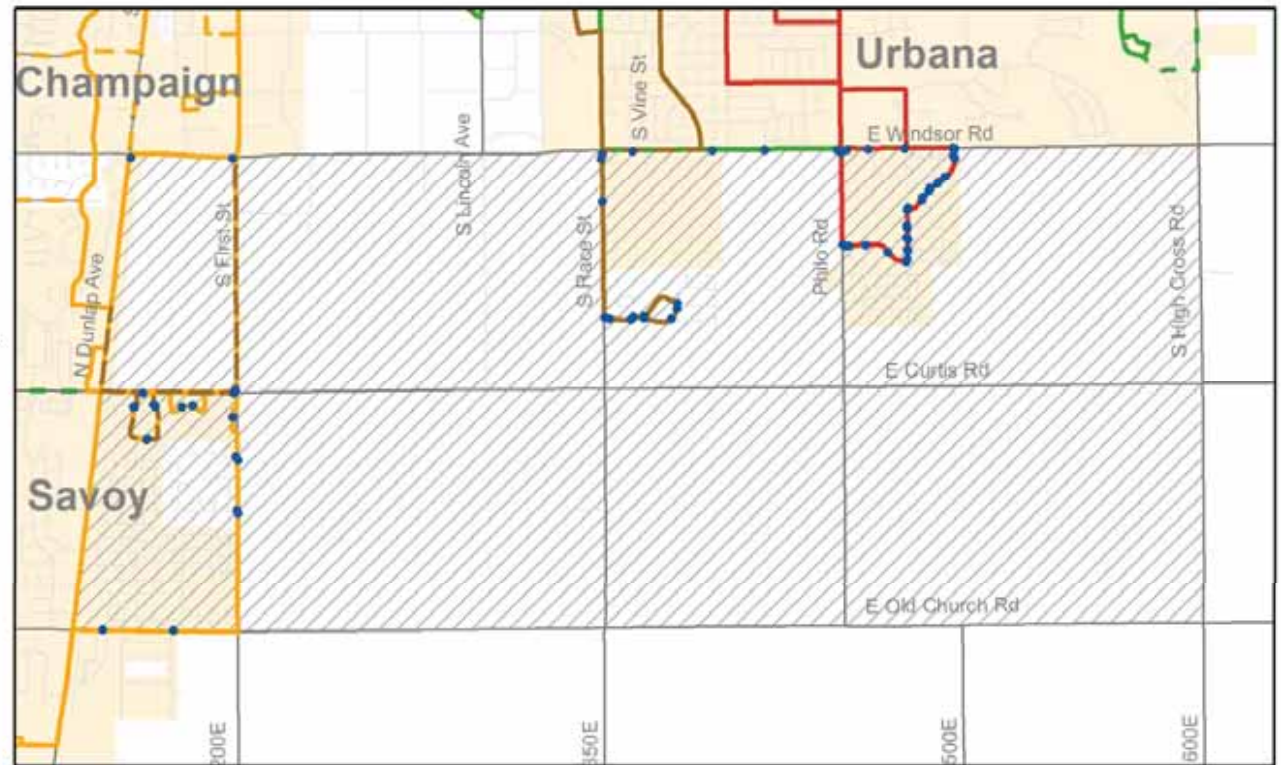
Transportation

Transit Service

Legend

- Transit Stop
- Study Area Transit Routes & Scheduled Trips
 - Bronze: 37 daily trips*
 - Red: 63 daily trips
 - Yellow: 57 daily trips
 - Green: No daytime trip, 25 daily evening trips
- Streets
- Major Roads
- Corporate Limits
- Study Area

* Trip numbers represent the number of scheduled trips from 8:00 a.m. to 5:59 p.m. in weekdays during August 16 to December 19, 2015 schedule period, not actual ridership.

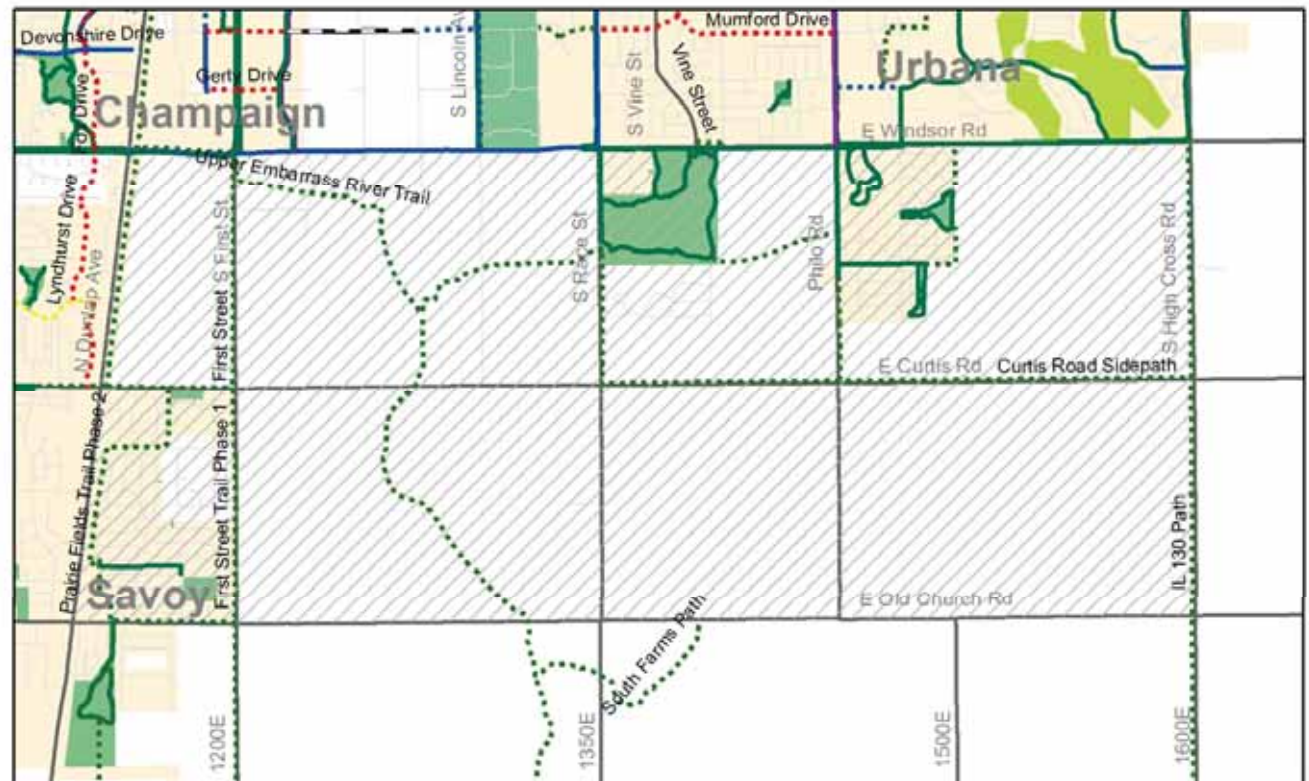


Transportation

Existing and Proposed Bikeways and Trails

Legend

- | | |
|--------------------------------|--------------------|
| Existing Bikeways & Trails | — Streets |
| — Bike Lanes | — Major Roads |
| — Sharrows | — Corporate Limits |
| — Shared-Use Path | — Study Area |
| Existing Greenways | |
| — Public Golf Course | |
| — Public Park | |
| Proposed Bikeways & Trails | |
| •••• Bike Lanes | |
| •••• Bike Route | |
| •••• Shared Bike/Parking Lanes | |
| •••• Shared-Use Path | |
| — Undetermined | |



Transportation

Sidewalk Segment

Legend

- Pedestrian Signal
- Sidewalk
- Missing Sidewalk Segment
- Streets
- Major Roads
- ▨ Study Area



Transportation

Intersection and Segment Crash Locations (2010-2014)

Legend

Intersection Crash



Segment Crash



- Streets
- Major Roads
- Study Area



Transportation

Intersection and Segment Injury Locations (2010-2014)


Legend

Intersection Injury


-  1 B-Injury
-  4 B-Injury
-  9 C-Injury

Segment Injury

-  1 A-Injury
-  2 B-Injury
-  1 C-Injury

 Streets

 Major Roads

 Study Area



Transportation

AM Peak Intersection LOS

Legend

LOS (Level of Service)

-  LOS A
-  LOS B
-  LOS C
-  LOS D
-  LOS E

 Streets

 Major Roads

 Study Area



Transportation

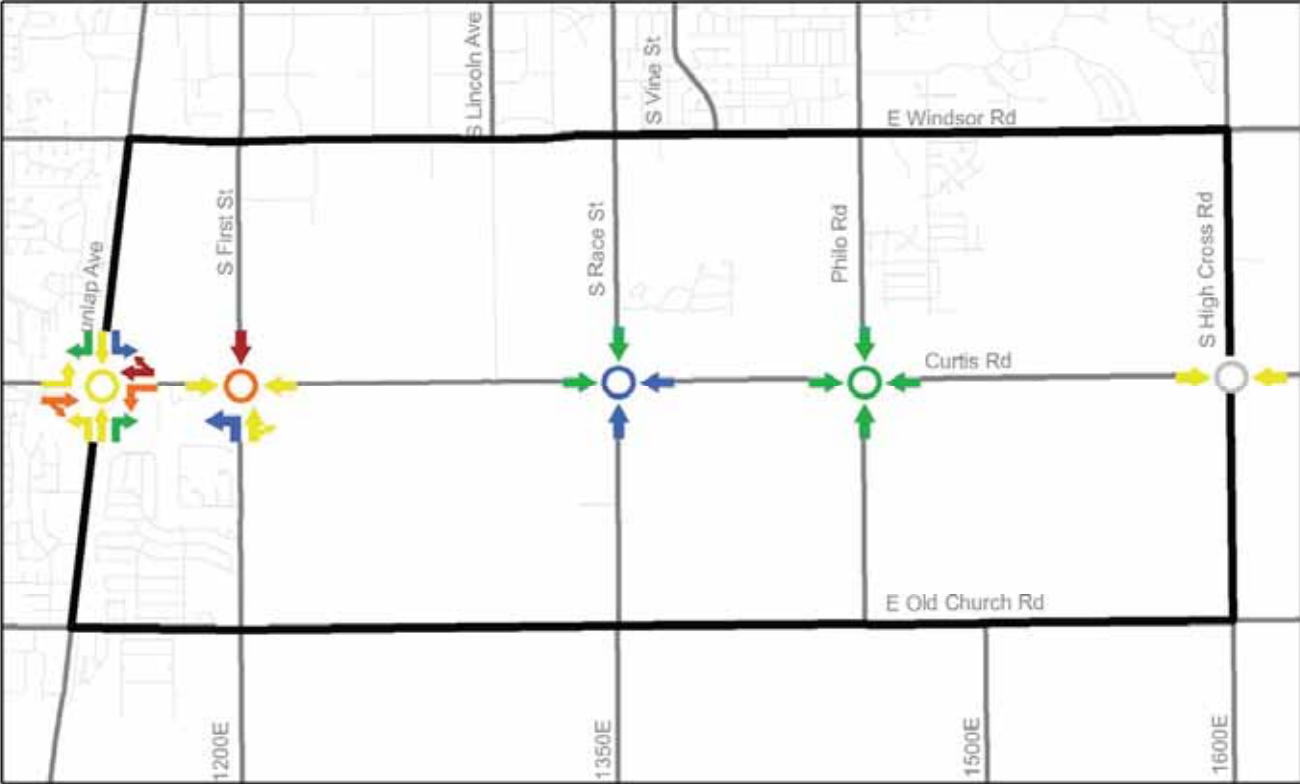
PM Peak Intersection LOS

Legend

LOS (Level of Service)

- LOS A
- LOS B
- LOS C
- LOS D
- LOS E

- Streets
- Major Roads
- Study Area



Agenda

1. Overview of Corridor Study
2. Summary of Existing Condition & Projections
 - Environmental Assessment
 - Facilities and Services
 - Land Use and Future Development
 - Transportation
3. Public Input
 - How do you use Curtis Road?
 - Curtis Road Strengths, Weaknesses, and Opportunities?

Public Input

How do you use Curtis Road?

 **Origin**  **Destination**

String:

Walk, **Bicycle**, **Car**, **Bus**,
Other (e.g. agricultural
vehicle, freight, etc)




Public Input

-  Strengths
-  Weaknesses
-  Opportunities/Ideas for improvements



Public Input



**CURTIS ROAD
CORRIDOR STUDY**

**Trips
Strengths
Weaknesses
Opportunities**

Public Meeting
October 13, 2016
Church of Christ, 2601 Palo Verde, Urbana

cuuats.org/curtis

1. Think of specific locations along Curtis Road between US 45/Neil Street and IL 130/High Cross Road where you have observed a strength or a weakness in the current transportation system and list them here:

Location (or nearest intersection): _____

Strength/Weakness/Opportunity (circle one and describe below):

Location (or nearest intersection): _____

Strength/Weakness/Opportunity (circle one and describe below):

Location (or nearest intersection): _____

Strength/Weakness/Opportunity (circle one and describe below):

2. How often do you use each of the following transportation modes on Curtis Road between US 45/Neil Street and IL 130/High Cross Road? (check the appropriate boxes)

	Never	Occasionally/ Seasonally	Monthly	Weekly	Daily
Walk	<input type="checkbox"/>	<input type="checkbox"/>	<input type="checkbox"/>	<input type="checkbox"/>	<input type="checkbox"/>
Bicycle	<input type="checkbox"/>	<input type="checkbox"/>	<input type="checkbox"/>	<input type="checkbox"/>	<input type="checkbox"/>
Car	<input type="checkbox"/>	<input type="checkbox"/>	<input type="checkbox"/>	<input type="checkbox"/>	<input type="checkbox"/>
Bus	<input type="checkbox"/>	<input type="checkbox"/>	<input type="checkbox"/>	<input type="checkbox"/>	<input type="checkbox"/>
Other*	<input type="checkbox"/>	<input type="checkbox"/>	<input type="checkbox"/>	<input type="checkbox"/>	<input type="checkbox"/>

*If 'other' mode(s) used, briefly describe: _____

3. Please provide any additional comments or ideas about your vision for the future of the Curtis Road between US 45/Neil Street and IL 130/High Cross Road:

4. Please provide any additional comments about the format or content of this meeting and/or what you would like to see done differently in future public meetings for the Curtis Road Corridor:

The following information will help us make sure we are collecting input from a representative sample of the population:

How did you hear about this event? (check all that apply)

Newspaper Road signs TV Email*
*from _____

Your address or nearest intersection: _____

Age: 0-9 10-19 20-29 30-39 40-49 50-59 60-69 70+

Gender: Female Male Prefer not to answer

Race/Ethnicity: African American/Black Am. Indian & Alaskan Native Asian Native HI or Pacific Islander White/Caucasian Hispanic Latino Other: _____

Thank you for your input on transportation conditions in our community!

Please leave your survey in the survey box on the sign-in desk
OR
mail this survey to:
CUUATS
c/o Ashlee McLaughlin
1776 East Washington Street
Urbana, IL 61802

Public Input

- Information Boards
- Talk with CCRPC/CUUATS staff
- Have a snack



Thank you for being here!