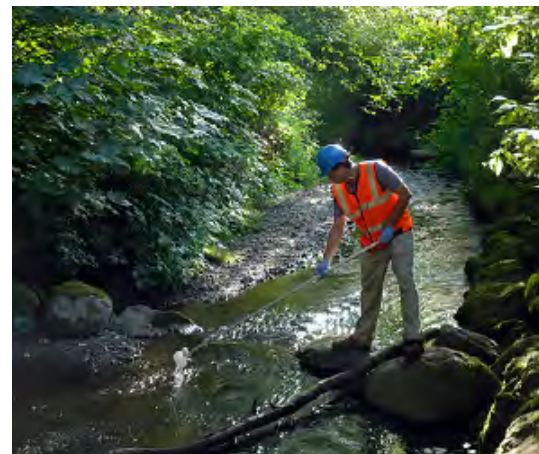




# SUSTAINABLE WATER MANAGEMENT PLAN

2013-2020  
City of Urbana, Illinois



## ACKNOWLEDGEMENTS

---

### Urbana Sustainability Advisory Commission

Marya Ryan, *Chair*  
Stephen Wald, *Vice-Chair*  
Gary Cziko  
John Marlin  
Todd Rusk  
Rachel Vellenga  
Amelia Neptune  
Aaron Petri (*former member*)

### City of Urbana Staff

William Gray, *Public Works Director*  
Scott R. Tess, *Environmental Sustainability Manager*  
Brad Bennett, *Senior Civil Engineer*  
Mike Brunk, *City Arborist*  
Vince Gustafson, *Public Facilities Supervisor*  
Kate L. Brickman, *Administrative Assistant*

### Urbana Mayor & City Council

Laurel Lunt Prussing, *Mayor*  
Charlie Smyth, *Ward 1*  
Eric Jakobsson, *Ward 2*  
Robert E. Lewis, *Ward 3*  
Brandon Bowersox, *Ward 4*  
Dennis P. Roberts, *Ward 5*  
Heather D. Stevenson, *Ward 6*  
Diane W. Marlin, *Ward 7*

DRAFT

**Comments on the Sustainable Water Management Plan can be made via:**

**Mail:** Scott R. Tess  
706 S. Glover Ave. Urbana, Illinois 61802  
**Website:** [www.urbaillinois.us/forms/sustainability-public-input-survey](http://www.urbaillinois.us/forms/sustainability-public-input-survey)

**Discuss Sustainability in Urbana at:**

**Facebook:** [www.facebook.com/sustainableurbana](http://www.facebook.com/sustainableurbana)

Photo Credit: Cover page, lower left corner - Dan Bennett

# CONTENTS

---

<b>1. SUMMARY</b> .....	<b>4</b>
<b>2. BACKGROUND</b> .....	<b>6</b>
2.1 Aspect 1: Potable Water Supply and Demand .....	7
2.2 Aspect 2: Potable Water Quality.....	9
2.3 Aspect 3: Surface Water & Stormwater .....	11
2.4 Aspect 4: Flood Management .....	13
2.5 Aspect 5: Recreational Waters .....	14
<b>3. ASPECTS, GOALS, &amp; ACTIONS</b> .....	<b>15</b>
3.1 Aspect 1: Potable Water Supply and Demand.....	16
3.2 Aspect 2: Potable Water Quality.....	18
3.3 Aspect 3: Surface Water & Stormwater .....	19
3.4 Aspect 4: Flood Management.....	20
3.5 Aspect 5: Recreational Waters.....	20
3.6 Implementation Table.....	21



## Impetus

The impetus for this plan comes from a recognition of continued drawdown of our potable water supply, new risks to our potable water supply, impending state stormwater quality regulations, uncertainty created by climate change, and the value of restored high quality waterfronts.

## Purpose

This Sustainable Water Management Plan has been composed to review the current state of five Aspects of water management and to lay out Goals to manage these Aspects more sustainably by implementing specific, achievable Actions.

## Scope

The scope of this Sustainable Water Management Plan includes ambitious, but achievable Goals for water conservation within City-owned buildings, region-wide coordination, consideration of conservation rules for new private developments, and public engagement in conservation activities addressing businesses and residents.

## Timeframe

All Actions in this Sustainable Water Management Plan are intended to be completed between January 1, 2013 and January 1, 2020 with the exception of certain Actions that shall be ongoing. All Actions are listed in condensed form in the Implementation Table on page 21.

## 5 ASPECTS : 8 GOALS : 26 ACTIONS

### ASPECT 1: POTABLE WATER SUPPLY & DEMAND

- GOAL 1** **CONTINUE A DECREASING TREND OF PER CAPITA POTABLE WATER USE**
- Action 1** Track potable water use for community and for City of Urbana facilities.
  - Action 2** Demonstrate, promote, and/or incentivize practices to reduce potable water used for commercial, residential, and/or irrigation purposes.
  - Action 3** Consider adoption of the Champaign County Regional Planning Commission's forthcoming model emergency water conservation ordinance.
  - Action 4** Assess feasibility of a rain sensor and/or soil moisture sensor ordinance for new landscape irrigation systems.
  - Action 5** Assess feasibility of a topsoil retention ordinance.
  - Action 6** Collaborate with Mahomet Aquifer stakeholders in coordinated messaging and policies.

- GOAL 2** **REDUCE POTABLE WATER USE IN CITY-OWNED BUILDINGS BY 24%**
- Action 1** Retrofit water-saving faucet aerators where appropriate.
  - Action 2** Upgrade computer server room cooling system.
  - Action 3** Reduce water used for landscape irrigation.
  - Action 4** Retrofit water-saving toilets where appropriate.
  - Action 5** Assess opportunities for reuse of water treated by the Urbana- Champaign-Sanitary District.
  - Action 6** Establish a policy of choosing EPA WaterSense labeled products for City procurement.

### ASPECT 2: POTABLE WATER QUALITY

- GOAL 1** **PROTECT POTABLE WATER QUALITY IN THE MAHOMET AQUIFER**
- Action 1** Continue to pursue Sole Source Aquifer status to protect the Mahomet Aquifer.
  - Action 2** Continue to pursue appropriate legal action to protect the Mahomet Aquifer.
  - Action 3** Collaborate with Mahomet Aquifer stakeholders in coordinated messaging and policies.

- GOAL 2** **INVESTIGATE ADDITIONAL ACTIVITIES TO PROTECT POTABLE WATER QUALITY**
- Action 1** Assess legal, funding, and staffing needs for brownfields cleanup and redevelopment.
  - Action 2** Assess feasibility of household hazardous waste collection events.

# 1. SUMMARY

## ASPECT 3: SURFACE WATER & STORMWATER

GOAL

1

### PROTECT SURFACE WATER AND STORMWATER QUALITY

**Action 1** Continue to implement Stormwater Utility Credit and Incentive Program.

**Action 2** Demonstrate & promote environmentally friendly landscaping techniques.

GOAL

2

### INVESTIGATE ACTIVITIES TO PROTECT SURFACE WATER AND STORMWATER

**Action 1** Assess best practices for inspections, maintenance, and regulation of private and municipal stormwater storage and/or stormwater treatment facilities.

**Action 2** Assess feasibility of maintaining a pharmaceutical waste collection drop box at the police station.

**Action 3** Report EPA TMDL testing to the Sustainability Advisory Commission.

## ASPECT 4: FLOOD MANAGEMENT

GOAL

1

### PLAN FOR CLIMATE IMPACTS ON FLOOD MANAGEMENT

**Action 1** Ensure that the focus group called to address climate change adaptation in Goal 4 of the *Urbana Climate Action Plan* addresses management and mitigation of potential flood impacts.

## ASPECT 5: RECREATIONAL WATERS

GOAL

1

### SUPPORT THE ACCESS TO AND USE OF RECREATIONAL WATERS

**Action 1** Assess current amount of public access to recreational waters.

**Action 2** Assess a long term public access goal for recreational waters in Urbana.

**Action 3** Promote an appreciation for the ecological, aesthetic, and economic values of recreational waters as green infrastructure.

## 2. BACKGROUND



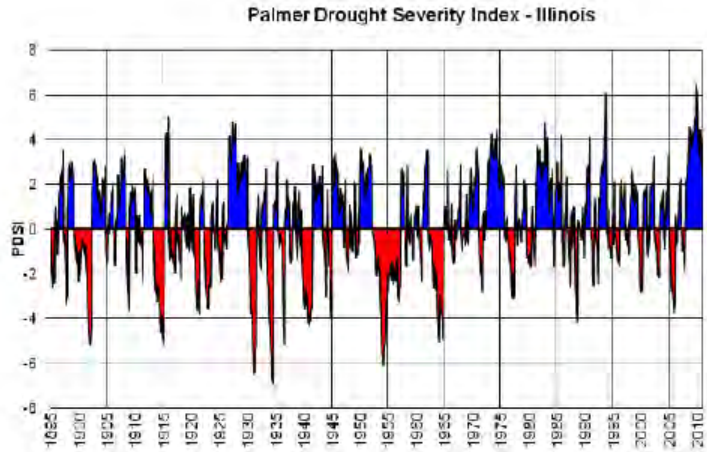
Crystal Lake

## 2.1 BACKGROUND

### Potable Water Supply & Demand

The Mahomet Aquifer supplies potable water to much of Central Illinois, including the City of Urbana. Potable water is water that is safe for drinking. East-Central Illinois uses over 200 million gallons of water per day. Current models show little if any aquifer recharge within the City of Urbana.

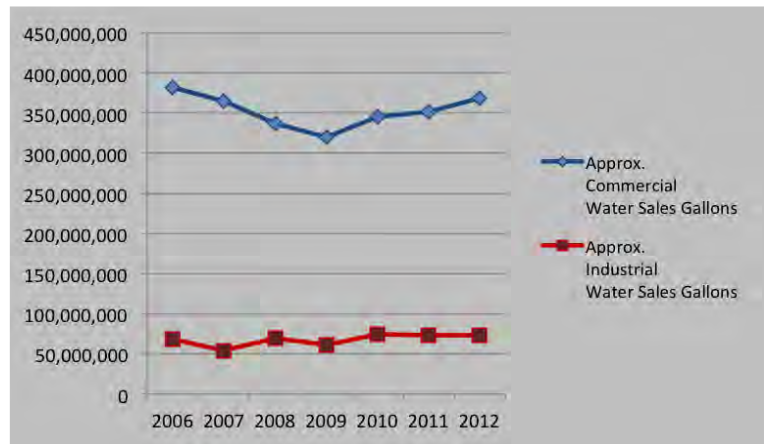
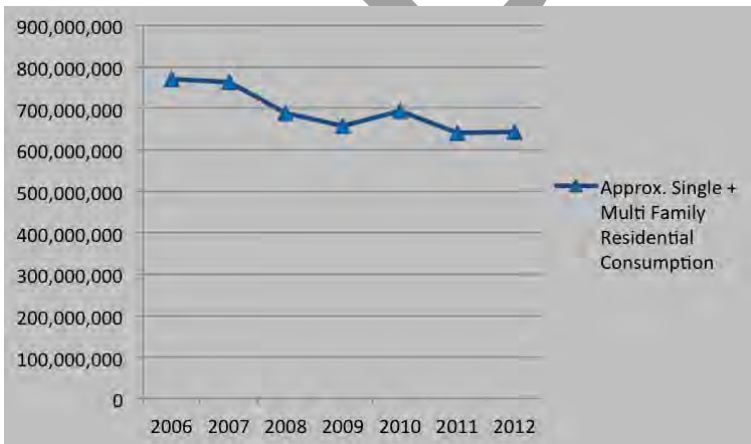
Per capita residential potable water consumption has been declining for years in Urbana and in the U.S. generally. Additionally, municipal water consumption has been declining. Commercial and industrial water use has fluctuated.



State of Illinois Drought Preparedness and Response Plan  
Adopted by the State Water Plan Task Force October 12, 2011

Approx. Single + Multi-Family Residential Consumption			Approx. Commercial Consumption		Approx. Industrial Water Consumption	
	Gallons	Per Capita Per Day	Gallons	% Change	Gallons	% change
2006	770,659,750	54	382,116,750		68,244,000	
2007	764,572,900	53	364,697,460	-5%	54,172,500	-21%
2008	688,741,000	48	336,732,750	-8%	68,990,250	27%
2009	658,198,750	45	319,500,000	-5%	60,453,000	-12%
2010	693,059,750	46	345,158,250	8%	74,970,000	24%
2011	639,700,500	42	351,974,250	2%	72,640,500	-3%
2012	642,242,370	42	368,193,750	5%	73,554,000	1%

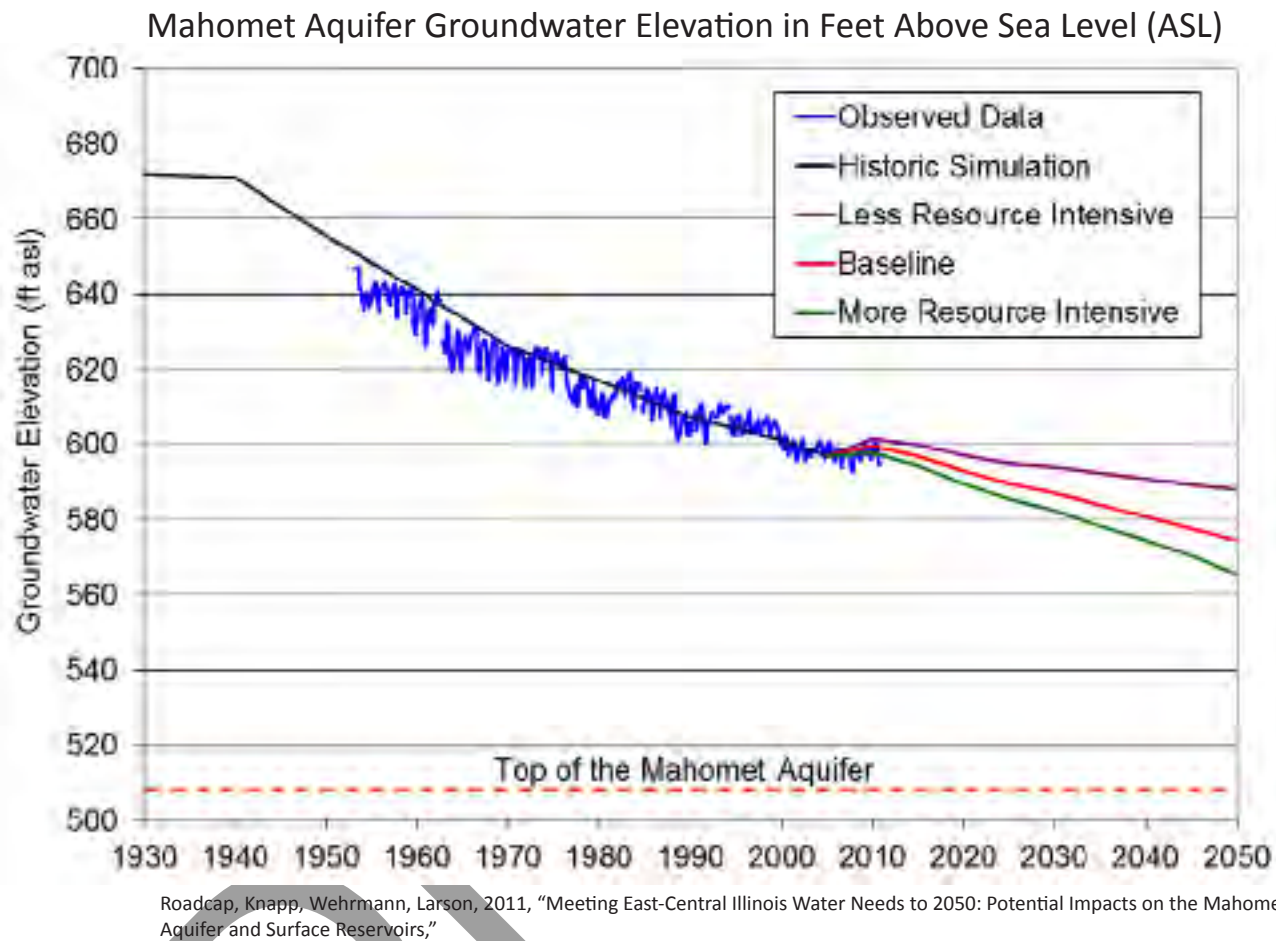
Data from Illinois American Water



Data from Illinois American Water

## 2.1 BACKGROUND

Despite improvements in efficient water use, groundwater elevations are predicted to fall slowly over the coming decades. The expected declines are not predicted to interrupt municipal potable water service due to the large capacity of the Mahomet Aquifer. Furthermore, the Drought Subcommittee of the Regional Water Supply Planning Committee have published a document titled *East-Central Illinois Water Supplies Vulnerable to Droughts of Record* where the committee stated no water supplies in Champaign County are to be listed as vulnerable.



On January 24, 2007, Executive Order 13423 *Strengthening Federal Environmental, Energy, and Transportation Management*, was issued. This order mandates that Federal agencies reduce water intensity (gallons per square foot) by 2% each year through FY 2015 for a total of 16% based on water consumption in FY 2007. This 2% annual reduction offers a good example for local governments to strive for.

### Potable Water Supply & Demand Summary

- Additional water conservation measures are necessary to ensure long term sustainable resource use.
- Per capita residential and municipal potable water consumption has been falling.
- There may be some interaction between the deep Mahomet Aquifer and shallower aquifers creating the potential for localized dewatering of wells.
- Modeled predictions could change due to unforeseen growth and development.

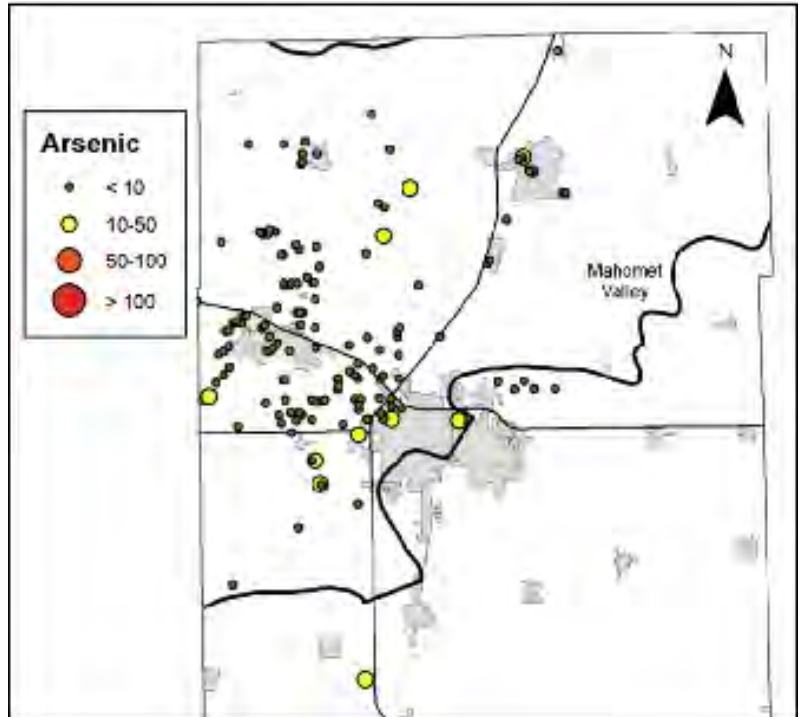


## 2.2 BACKGROUND

### Potable Water Quality

The water quality in the Mahomet Aquifer is very good. There is a very small amount of naturally occurring Arsenic in the shallower aquifers as well as the deeper Mahomet Aquifer. Public water supplies come from the Mahomet Aquifer while some potable wells and some irrigation wells draw water from the shallower aquifers. Public water supplies are tested and treated for a range of potential contaminants and meet stringent drinking water quality standards including standards for Arsenic. No pollutants are found in the Mahomet Aquifer in quantities significant for human health.

Drinking water must be <10 ug/L (ppb) of Arsenic



Walt Kelly. Personal communication. October 10, 2012.

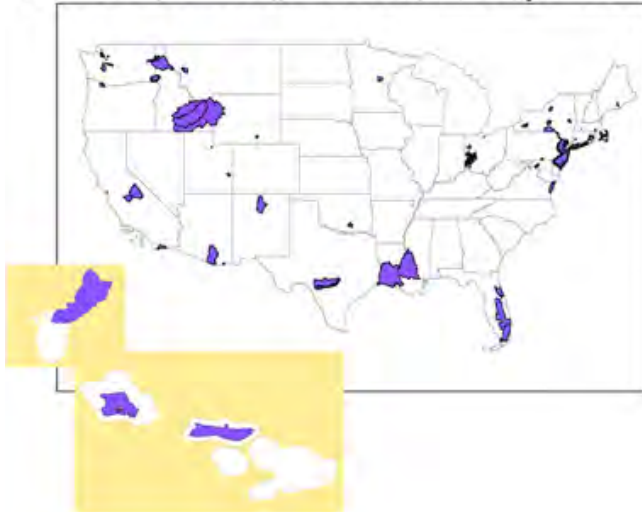
### Mahomet Aquifer



The Mahomet Aquifer is a 'confined' aquifer, as it is overlaid with impermeable geologic layers that pressurize the aquifer. It is this pressure that forces the groundwater elevation higher than the top of the aquifer (as seen on the previous page). These impermeable layers make it difficult for pollutants to percolate into the aquifer. However, there may be areas where different, more permeable geologic layers allow interaction between the shallower aquifers and the Mahomet Aquifer. These areas are not well documented.

## 2.2 BACKGROUND

### National Sole Source Aquifers



US Environmental Protection Agency

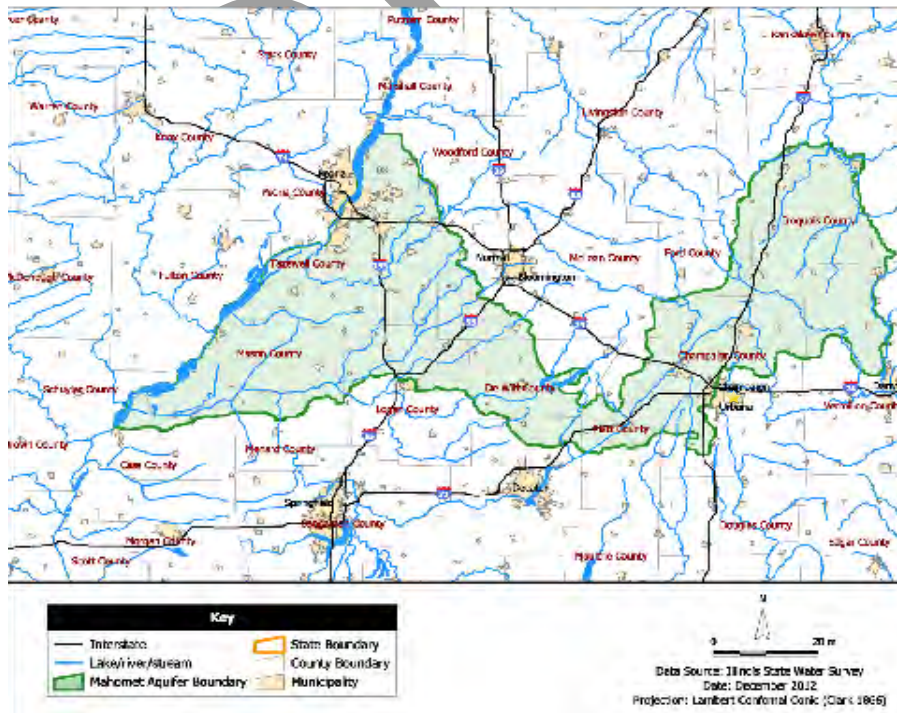
Superfund sites, brownfields, undeclared soil contamination, and siting of new high-risk activities such as hazardous waste landfills above the Mahomet Aquifer can pose a threat to the quality of our potable water supply. However, Champaign County has only one Superfund site located at the former Chanute Air Force base. Superfund refers to hazardous waste cleanup processes that fall under the authority of the federal *Comprehensive Response, Compensation, and Liability Act*. Site cleanup progress can be monitored at Superfund sites <http://cfpub.epa.gov/supercpad/cursites/srchsites.cfm>. At present, the Chanute site is currently in the “Study and Remedy Selection” phase.

There are no declared brownfields in Champaign County although there are likely sites with contaminated soils yet to be discovered dating back to industrial operations that occurred before the advent of environmental regulations.

The City of Urbana, in collaboration with many other municipalities, submitted an application to the U.S. EPA on December 12, 2012 to have the Mahomet Aquifer designated a Sole Source Aquifer (SSA). This designation would require additional environmental scrutiny on new federally funded projects and new landfills to ensure our drinking water is protected from contamination. If the application is successful, the Mahomet Aquifer will be the first Sole Source Aquifer designation in Illinois.

### Potable Water Quality Summary

- Potable water quality is very good.
- Permitting/Siting of new facilities can pose risks, but the risks are known.
- Undeclared brownfields can pose risks, but the risks are largely unknown.



## 2.3 BACKGROUND

### Stormwater and Surface Water Quality

Urbana is fortunate that the Illinois EPA conducts water quality testing of several surface waters in the City as part of federal Clean Water Act requirements. The results of this testing are known as the '303(d) List' available at <http://www.epa.state.il.us/water/water-quality/>. This testing determines whether surface waters are meeting water quality criteria specified for their designated uses. The current testing regime does not include regular testing for pharmaceutical wastes that may enter the environment through improper disposal and excretion. Wastewater treatment plants are not designed to treat pharmaceutical waste, therefore, flushed pharmaceuticals as well as excreted pharmaceuticals may persist through treatment and be discharged to surface waters. Aside from pharmaceuticals, approximately 15% of surface waters statewide have been assessed, though not all waters are assessed for all designated uses every year. Officially recognized designated uses include:

- Aesthetic Quality
- Aquatic Life
- Fish Consumption
- Indigenous Aquatic Life
- Primary Contact Recreation
- Public and Food Processing Water Supply
- Secondary Contact Recreation

### 2012 Illinois 303(d) List Results

Surface Water	Designated Use	Impairment
Boneyard Creek	Aquatic Life	Copper, Dissolved Oxygen, Phosphorus (Total)
Crystal Lake	Fish Consumption	Mercury

### Boneyard Creek Improvements Project



The City of Urbana's Boneyard Creek Improvements Project will transform what is primarily a drainage channel into a valuable public amenity. The project will improve beauty, public access, safety, and ecological conditions of the creek, stimulating private sector redevelopment of the area. Green infrastructure investments that improve environmental performance while providing urban green space have stimulated nearby private sector investment in many places across the U.S.

## 2.3 BACKGROUND



Boneyard Creek

To improve surface water quality, Urbana performs leaf collection services and street sweeping to remove pollutants that can be picked up by stormwater. Additionally, Urbana is implementing a Stormwater Utility Credit and Incentive Program. To account for the impact that on-site stormwater management can have on the City's stormwater management program costs, the City is implementing a stormwater utility fee.

Ratepayers can reduce their stormwater utility fee by applying for incentives and credits that are outlined in the program. These incentives and credits are available to ratepayers who reduce the impact of the runoff from their properties by implementing sustainable stormwater practices that allow stormwater to infiltrate into the ground. These practices can reduce the rate and volume of runoff, and remove pollutants that would otherwise be carried to streams and lakes.

Credit Type	Credit Amount	
	Single Family / Duplex	Other Properties
Runoff Rate Reduction	NA	20% max.
Runoff Volume Reduction	NA	20% max.
Runoff Water Quality	NA	10% max.
Direct Discharge	NA	50% max.
Education	NA	\$5/student, 50% max.

### Surface and Stormwater Quality Summary

- Surface water quality data is intermittent.
- Surface water quality is good, but has room for improvement.
- Restoring channelization impacts can provide community development benefits.

Incentive Type	Maximum Amount
Rain Barrel <sup>1</sup>	\$50
Rain Garden <sup>2</sup>	\$250
Runoff Rate Reduction <sup>2,3</sup>	\$250
Runoff Volume Reduction <sup>2,3</sup>	\$250
Runoff Water Quality <sup>2,3</sup>	\$250
<b>Total Incentive Available</b>	<b>\$300</b>

## 2.4 BACKGROUND

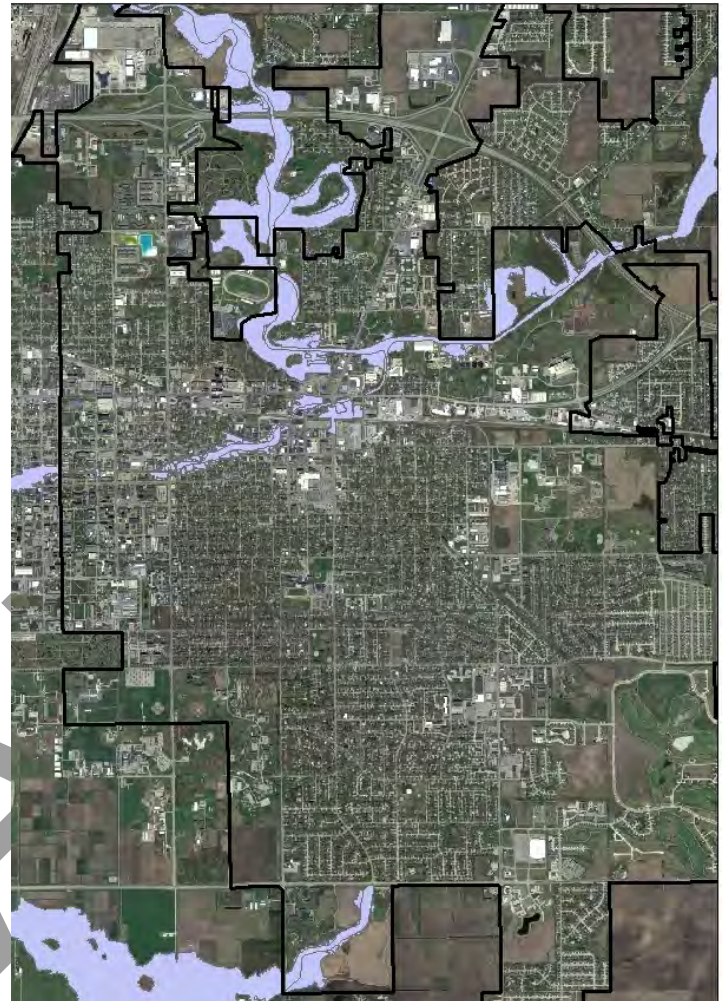
### Flood Management

Flood management is primarily provided by the City of Urbana's stormwater sewer system as well as public and private stormwater detention ponds. This infrastructure drains stormwater from streets and properties, reducing the frequency and severity of flooding.

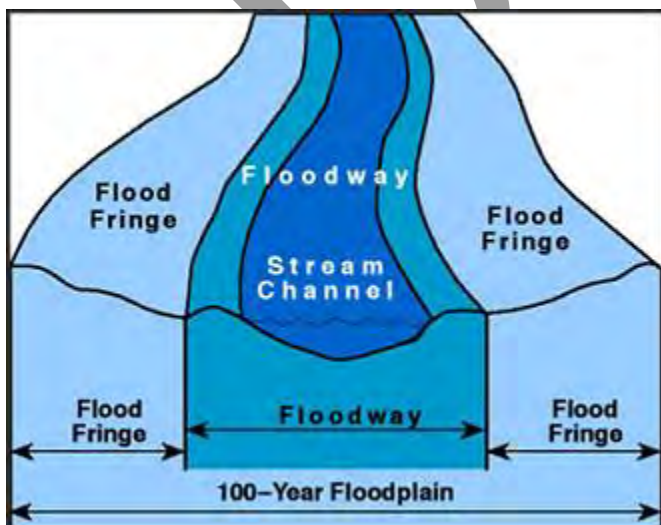
The credits and incentives in the City's forthcoming Stormwater Utility Program aim to decrease the rate and volume of stormwater entering the stormwater sewer system by detaining and infiltrating more water on the property which it falls upon. However, many soil types prevalent in Urbana allow low stormwater infiltration rates. Therefore, stormwater detention will remain a primary flood management strategy.

Many cities are removing parking lots and derelict buildings along waterfronts and replacing them with green infrastructure that provides flood management as well as park space. While this strategy is effective, it is also very expensive to purchase land and demolish structures.

### Flood Zones



### Flood Cross Section



City of Ann Arbor, MI

### Flood Management Summary

- Low soil infiltration rates mean that stormwater detention will remain a primary flood control strategy.
- Replacing impervious surfaces and structures with green infrastructure can address flood management, but is expensive.
- Goal 4 of the *Urbana Climate Action Plan* calls for a task force to study adaptation to local climate change impacts.

## 2.4 BACKGROUND

### Recreational Waters

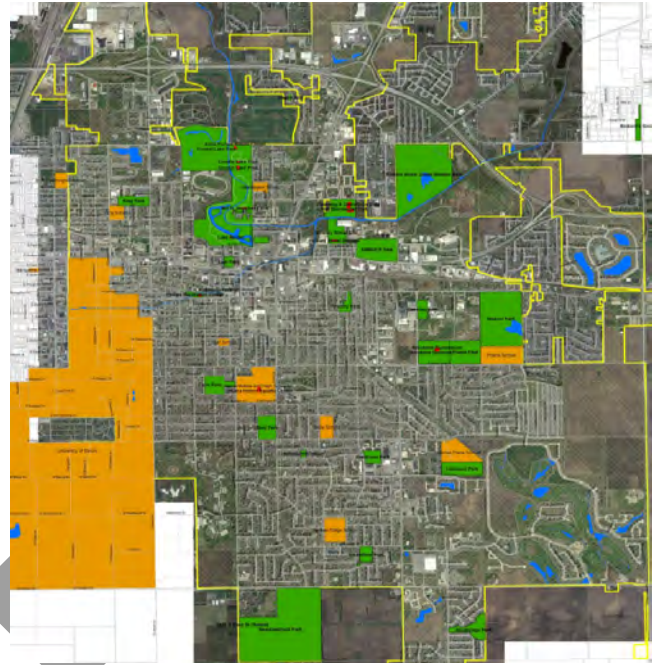
The quality and accessibility of recreational waters are increasingly recognized as critical green infrastructure that add value to nearby property. High quality, publicly accessible waters also enhance the livability and hence the desirability of a community.

The federal Clean Water Act establishes a “goal of water quality which provides for the protection and propagation of fish, shellfish, and wildlife and provides for recreation in and on the water.” The Act goes on to describe water quality criteria for Primary Contact and Secondary Contact Recreation. Primary Contact is recreation in the water. Secondary Contact is recreation near the water. No Urbana waters have been assessed for Primary or Secondary Contact Recreation by the Illinois EPA.

The same Act includes narrative criteria for Aesthetic Quality of surface waters. No waters in Urbana have been assessed for Aesthetic Quality either. The narrative standards include the following impairments:

- Sludge
- Bottom deposits
- Floating debris
- Visible oil
- Odor
- Plant growth
- Algal growth
- Color
- Turbidity

### Parks and Surface Waters



Boneyard Creek



M Dorothy, Wikimedia Commons

### Recreational Waters

- No waters in Urbana have been assessed for Recreation or Aesthetic Quality metrics by Illinois EPA.
- Public Access to recreational waters has never been assessed in Urbana.

# 3. ASPECTS, GOALS, & ACTIONS

Crystal Lake



## 3.1 ASPECT 1: POTABLE WATER SUPPLY AND DEMAND

### GOAL 1: CONTINUE A DECREASING TREND OF PER CAPITA POTABLE WATER USE

### IMPLEMENTATION PARTNERS

**ACTION 1** Track potable water use for community and for City of Urbana facilities

- Work with the water company to ensure annual water consumption reporting showing monthly consumption.
- Seek similar cities to share and compare data with.

- Illinois American Water

**ACTION 2** Demonstrate, promote, and/or incentivize practices to reduce potable water used for commercial, residential, and/or irrigation purposes.

- Promote water-saving showerheads, faucet aerators, toilets, pre-rinse spray nozzles, micro-irrigation/drip irrigation, rain barrels, and irrigation controls.
- Organize a rain barrel truck sale to encourage stormwater reuse.
- Promote appropriate lawn irrigation practices, e.g. 'Brown is the New Green' or 'Better Homes and Gutters.'

- Illinois Green Business Association (IGBA), Urbana Business Association (UBA), IL American Water

**ACTION 3** Consider adoption of the Champaign County Regional Planning Commission's forthcoming model emergency water conservation ordinance.

- Champaign County Regional Planning Commission

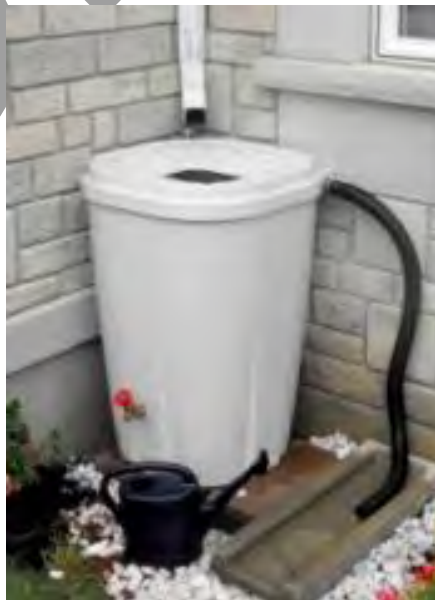
**ACTION 4** Assess feasibility of a rain sensor and/or soil moisture sensor ordinance for new landscape irrigation systems.

**ACTION 5** Assess feasibility of a topsoil retention ordinance.

**ACTION 6** Collaborate with Mahomet Aquifer stakeholders in coordinated messaging and policies.

- Consider common messaging encouraging water conservation and proper disposal of household hazardous wastes.
- Consider policies or ordinances to protect Mahomet Aquifer recharge areas

- Mahomet Aquifer Consortium, Prairie Research Institute, et al





## 3.1 ASPECT 1: POTABLE WATER SUPPLY AND DEMAND

### GOAL 2: REDUCE POTABLE WATER USE IN CITY-OWNED BUILDINGS BY 24%

### IMPLEMENTATION PARTNERS

**ACTION 1** Retrofit water-saving faucet aerators where appropriate.

- Change (32) 2.2 Gallons Per Minute (GPM) faucet aerators to 1.5 GPM aerators. At 10 minutes per day for 255 days of use, the City saves 57,120 gallons per year, reducing water usage by 2% and saving \$260 annually.

**ACTION 2** Upgrade computer-server room cooling system.

- Replace aging water cooled system with ductless mini-split electric-cooled system, saving 100% of an estimated 525,000 gallons per year or 18% annual use and \$2,452 in annual savings.

**ACTION 3** Reduce water used for landscape irrigation.

- Install rain sensors, soil moisture sensors, or other irrigation controls achieving 15% reduction in total irrigation or 5,600 gallons per year or 2% of total annual use and \$115 in savings.
- Consider resilient landscapes that minimize use of labor, water, and energy through plant selection and limited or no irrigation for all new landscape plans for city-owned properties.

**ACTION 4** Retrofit water-saving toilets where appropriate.

- Change (9) 1 Gallon Per Flush (GPF) Urinals to .125 GPF Urinals. At 30 flushes per day for 255 days, the city would save 60,244 gallons per year or 2.1% of annual use and \$273 in annual savings.

**ACTION 5** Assess opportunities for reuse of water treated by the Urbana-Champaign-Sanitary District.

- Urbana-Champaign Sanitary District

**Action 6** Establish a policy of choosing EPA WaterSense labeled products for City procurement.

- EPA WaterSense Program



## 3.2 ASPECT 2: POTABLE WATER QUALITY

### GOAL 1: PROTECT POTABLE WATER QUALITY IN THE MAHOMET AQUIFER

### IMPLEMENTATION PARTNERS

**ACTION 1** Continue to pursue Sole Source Aquifer status to protect the Mahomet Aquifer.

• Cities, Mahomet Aquifer Consortium

**ACTION 2** Continue to pursue appropriate legal action to protect the Mahomet Aquifer.

• Cities, Mahomet Aquifer Consortium

**ACTION 3** Collaborate with Mahomet Aquifer stakeholders in coordinated messaging and policies.

• Cities, Mahomet Aquifer Consortium, Prairie Research Institute

- Consider common messaging which encourages water conservation and proper disposal of household hazardous wastes.
- Consider policies or ordinances to protect Mahomet Aquifer recharge areas in need of protection.

### GOAL 2: INVESTIGATE ACTIVITIES TO PROTECT POTABLE WATER QUALITY

### IMPLEMENTATION PARTNERS

**ACTION 1** Assess legal, funding, and staffing needs for brownfields cleanup and redevelopment.

• Illinois EPA Office of Brownfields Assistance

**ACTION 2** Assess feasibility of household hazardous waste collection events.

- Determine costs and funding sources.
- Assess proposed state legislation to establish architectural paint product stewardship.

• Champaign County Regional Planning Commission



Alex Anlicker - Wikimedia Commons

### 3.3 ASPECT 3: SURFACE WATER & STORMWATER QUALITY

#### GOAL 1: PROTECT SURFACE WATER AND STORMWATER QUALITY

#### IMPLEMENTATION PARTNERS

**ACTION 1** Continue to implement Stormwater Utility Credit and Incentive Program.

- Incentivize activities including rain barrels, rain gardens, permeable pavement, cisterns, green roofs, bioswales, and detention basins.

**ACTION 2** Demonstrate & promote environmentally friendly landscaping techniques.

- Promote judicious application of fertilizers and pesticides as well as onsite stormwater management including tree planting, bioswales and raingardens.
- Create 'Better Homes and Gutters' information and tour.

- University of Illinois Extension Service

#### GOAL 2: INVESTIGATE ACTIVITIES TO PROTECT SURFACE WATER AND STORMWATER

#### IMPLEMENTATION PARTNERS

**ACTION 1** Assess best practices for inspections, maintenance, and regulation of private and municipal stormwater storage and/or stormwater treatment facilities.

**ACTION 2** Assess feasibility of maintaining a pharmaceutical waste collection drop box at the police station.

**ACTION 3** Report EPA TMDL testing to the Sustainability Advisory Commission.

- Illinois EPA Bureau of Water

- Urbana Police, Champaign Police, Champaign County Sheriff, U of I Police, U of I SEA Grant

- Illinois EPA Bureau of Water



## 3.4 ASPECT 4: FLOOD MANAGEMENT

### GOAL 1: PLAN FOR CLIMATE IMPACTS ON FLOOD MANAGEMENT

### IMPLEMENTATION PARTNERS

**ACTION 1** Ensure that the focus group called to address climate change adaptation in Goal 4 of the *Urbana Climate Action Plan* addresses management and mitigation of potential flood impacts.

## 3.5 ASPECT 5: RECREATIONAL WATERS

### GOAL 2: SUPPORT ACCESS TO AND USE OF RECREATIONAL WATERS

### IMPLEMENTATION PARTNERS

**ACTION 1** Assess current amount of public access to recreational waters.

- Create a metric that distinguishes recreational waters from stormwater treatment facilities.
- Create a metric that distinguishes publicly accessible waters from inaccessible waters.

- Champaign County Regional Planning Commission

**ACTION 2** Assess a long term public access goal for recreational waters in Urbana.

- Champaign County Regional Planning Commission

**ACTION 3** Promote an appreciation for the ecological, aesthetic, and economic values of recreational waters as green infrastructure.

- Urbana Park District



### 3.6 IMPLEMENTATION TABLE

COMPLETE	ASPECT	GOAL	ACTION
Indeterminate	Aspect 2	Goal 1	Action 1 Continue to pursue Sole Source Aquifer status to protect the Mahomet Aquifer.
Indeterminate	Aspect 2	Goal 1	Action 2 Continue to pursue appropriate legal action to protect the Mahomet Aquifer.
Indefinite	Aspect 3	Goal 1	Action 1 Continue to implement Stormwater Utility Credit and Incentive Program.
Indefinite	Aspect 3	Goal 2	Action 3 Report EPA TMDL testing to the Sustainability Advisory Commission.
2013	Aspect 1	Goal 1	Action 1 Track potable water use for community and for City of Urbana facilities.
2013	Aspect 1	Goal 1	Action 2 Demonstrate, promote, and/or incentivize practices to reduce potable water used for commercial, residential, and/or irrigation purposes.
2013	Aspect 1	Goal 2	Action 1 Retrofit water-saving faucet aerators where appropriate.
2013	Aspect 1	Goal 2	Action 5 Assess opportunities for reuse of water treated by the Urbana- Champaign-Sanitary District.
2013	Aspect 2	Goal 2	Action 2 Assess feasibility of household hazardous waste collection events.
2013	Aspect 3	Goal 2	Action 1 Assess best practices for inspections, maintenance, and regulation of private and municipal stormwater storage and/or stormwater treatment facilities.
2013	Aspect 3	Goal 2	Action 2 Assess feasibility of maintaining a pharmaceutical waste collection drop box at the police station.
2013	Aspect 5	Goal 1	Action 1 Assess current amount of public access to recreational waters.
2014	Aspect 1	Goal 1	Action 3 Consider adoption of the forthcoming Champaign County Regional Planning Commission’s model emergency water conservation ordinance.
2014	Aspect 1	Goal 2	Action 2 Upgrade server room cooling system.
2014	Aspect 1	Goal 2	Action 6 Establish a policy of choosing EPA WaterSense labeled products for City procurement.
2014	Aspect 3	Goal 1	Action 2 Demonstrate & promote environmentally friendly landscaping techniques.
2014	Aspect 4	Goal 1	Action 1 Ensure that the focus group called to address climate change adaptation in Goal 4 of the Urbana Climate Action Plan addresses management and mitigation of potential flood impacts.
2014	Aspect 5	Goal 1	Action 2 Assess a long term public access goal for recreational waters in Urbana.
2014	Aspect 5	Goal 1	Action 3 Promote an appreciation for the ecological, aesthetic, and economic values of recreational waters as green infrastructure.
2015	Aspect 1	Goal 1	Action 4 Assess feasibility of a rain sensor and/or soil moisture sensor ordinance for new landscape irrigation systems.
2016	Aspect 1	Goal 1	Action 5 Assess feasibility of a topsoil retention ordinance.
2017	Aspect 1	Goal 1	Action 6 Collaborate with Mahomet Aquifer stakeholders in coordinated messaging and policies.
2017	Aspect 2	Goal 1	Action 3 Collaborate with Mahomet Aquifer stakeholders in coordinated messaging and policies.
2018	Aspect 1	Goal 2	Action 3 Reduce water used for landscape irrigation.
2019	Aspect 2	Goal 2	Action 1 Assess legal, funding, and staffing needs for brownfields cleanup and redevelopment.
2020	Aspect 1	Goal 2	Action 4 Retrofit water-saving toilets where appropriate.