



## DEPARTMENT OF COMMUNITY DEVELOPMENT SERVICES

*Economic Development Division*

### **m e m o r a n d u m**

**TO:** Urbana Public Arts Commission

**FROM:** Anna Hochhalter, Public Arts Coordinator

**DATE:** November 13, 2009

**SUBJECT: Public Art in King Park in Honor of Martin Luther King Jr.**

---

### **Background**

As described in the Public Arts Program Plan for FY 2009-2010, community interest has been expressed in the creation of an arts-related project which will honor the life of Martin Luther King Jr. The Public Arts Commission has formed a Subcommittee, comprised of Robin Hall and Robert Lewis, to explore options for this project. The project is a collaboration between a number of community organizations, including the Urbana Park District and citizen groups. Private partners and community-wide involvement will be key in the implementation of such a project once it is further defined. The project is currently in the exploratory stage. Below is a description of recent activities related to the project.

### **Discussion**

In the summer of 2009, the Urbana Park District, Urbana Public Arts Commission, and the University of Illinois Department of Landscape Architecture established a working partnership to promote the development of a “gateway sculpture plaza” to be located in King Park. The working partnership commissioned the Fall 2009 LA 335 Community Design studio to prepare a series of conceptual drawings to investigate the potential for establishing a new sculpture plaza/entryway into Urbana. The Community Design studio was co-taught by Dr. Laura Lawson, Associate Professor of Landscape Architecture, and Tim Bartlett, Superintendent of Planning and Operations of the Urbana Park District. Attached (Exhibit A) is the project description provided to the Design Studio.

On October 28, 2009, a panel was formed to review the designs created by 26 Landscape Architecture students. The review panel included Robin Hall, Public Arts Commission Chair; Robert Lewis, Alderman and Public Arts Commissioner; Vicki Mayes, Executive Director of the Urbana Park District; Crystal Womble, Urbana Park District Commissioner; and Dr. Elen Deming, Professor and Head of the Department of Landscape Architecture. Additionally, Anna Hochhalter, City of Urbana Public Arts Coordinator, assisted in the review process, while Dr. Laura Lawson and Tim Barlett facilitated the meeting.

The designs presented explored possible visions for King Park overall, as well as the development of a public art component in honor of Martin Luther King Jr. The designs for the public art component varied widely, and included such concepts as figurative sculptures, fountains inscribed with Dr. King's words, a timeline of Dr. King's life narrated on plaques installed in a sidewalk through the park, a 25 ft. high obsidian "Rock of Brotherhood", large scale "Ladders to Equality", and a mosaic memory wall. Attached in Exhibit B, is the collection of MLK Gateway Plaza and Conceptual Master Plans presented by the students.

The concepts generated through the design studio are a helpful tool in the process of envisioning and planning for the Dr. King Jr. project in King Park. These conceptual plans will be reviewed by the Urbana Community Alternative Policing (UCAP) neighborhood group, the Urbana Park District Board, and the Urbana Public Arts Commission. A coordinated process between these entities as well as additional neighborhood stakeholders, will be formalized in order to continue moving forward with the project. Comments from the Public Arts Commission will assist in the direction of the arts component of the project.

## **Recommendation**

Staff recommends that the Commission review the attached Conceptual Master Plans, and consider the designs related to the arts. Discussion of these designs will occur during the Public Arts Commission meeting on November 17, 2009, at 4:30PM.

### Attachments:

Exhibit A: LA 335 King Park Project Description

Exhibit B: Conceptual Master Plans for King Park Project

### **Project 3: King Park – Dr. Martin Luther King Jr. Gateway Plaza**

LA 335: Community and Open Space Design Studio

Fall 2009 (Lawson and Bartlett)

30% of Course Grade

- ❑ *Webster* defines gateway as: a means of entrance or exit; a city or castle entrance typically with towers or markers; an opening between two markers; to control by way of a gate...
- ❑ *Webster* defines park as: a piece of ground in or near a city kept for ornament and recreation; an area maintained in its natural state as a public property...
- ❑ *Webster* defines plaza as: a broad street; a public square in a city or town...



The Urbana Park District, Urbana Arts Commission, and the University of Illinois Department of Landscape Architecture have established a working partnership to promote the development of a “gateway sculpture plaza” to be located in King Park, Urbana, IL. The working partnership is intended to commission the Fall 2009 LA 335 Community Design studio to prepare a series of conceptual drawings to investigate the potential for establishing a new sculpture plaza/entryway into Urbana.

For many years, Lincoln Avenue has been identified as the “gateway” into the University of Illinois campus. Further, the City of Urbana also recognizes Lincoln Avenue as a gateway corridor for the entire Urbana community. Past and more recent planning and development activities have helped transform the corridor and adjacent neighborhoods into a more suitable “front door” for Urbana. Opportunities still exist for future improvements...

#### **King Park – A Community Park (Corridor + Open Space + Neighborhood)**

King Park is approximately 6 acres in size. The park is classified as a “community park” in the Urbana Park District strategic plan due to the types of programs and services offered in the park/school setting. The park was acquired by the Urbana Park District in 1967 and was known briefly as Hays Park until the UPD board officially named the park for Dr. Martin Luther King Jr., the 1964 Nobel Peace Prize recipient. Dr. King was fatally shot in Memphis, TN less than a year later.

Historically, the site was just north of what was then Hays School and was one of three new park sites acquired by the Park District in 1967. Around the same time period the school was also renamed “Dr. Martin Luther King Jr. Elementary School” by the Urbana School District. Both the Urbana Park District and the Urbana School District have a long history of a “ park/school” concept, with examples being Lohmann Park/Thomas Paine Elementary School, Prairie Park/Prairie Elementary School, and King Park / King Jr. High.

Today, the park stretches from Lincoln Avenue on the east end and nearly to Goodwin Avenue on the west end. Wascher Drive – a cul-de-sac street located off Lincoln Avenue – provides additional access into the park and allows for vehicular access/parking. Other additional parking

is available at King Elementary School as part of the park/school agreement. The Urbana Park District has identified additional parcels adjacent to the park (Felmley-Dickerson property, residential lots, etc.) as high priority land acquisition sites and will continue to work towards adding them to the overall park acreage to complete the District’s goal of expanding the park from Lincoln to Goodwin Avenues to improve the view shed, increase open space and allow the concept of “gateway” to be envisioned.

The park is in a neighborhood that is changing quickly and characterized by active community involvement. Since its beginnings, King Park has been characterized by active community involvement. During the mid 1980s, the community recognized a need for change in the quality of the housing stock in the adjacent neighborhoods near the park and school. Traffic on Lincoln Ave. increased due to the importance of the corridor as a gateway into the University of Illinois. Carle Clinic and Hospital experienced a dramatic increase in growth in patients, visitors, staff and facility expansion during 1980s-to present. Housing—particularly on the north side of the park—was limited and in poor condition. The adjacent Lincoln Mobile Home Park continued to negatively impact land values due to its poor condition and related criminal activity. The City of Urbana promoted the newly planned “Eades Street” development plan that included removal and replacement of several blocks of housing and relocation of the mobile home park outside of Urbana. The City of Urbana promoted new student housing options and new businesses along the Lincoln Avenue corridor to expand the tax base and improve the overall image of Urbana.

During the early 1990s, the Martin Luther King Adopt-a-Park neighborhood association formed and encouraged the Urbana Park District to acquire adjacent land and improve the overall appearance and features in the park. The neighborhood association organized park enhancement programs, recreational programs, and a community fun day in the park—Jettie Rhodes Day—named after one of the original organizing members for her efforts to improve the park and King Park neighborhood.

Today, the neighborhood association is working closely with the Urbana Park District, Urbana Arts Commission, and the Department of



Landscape Architecture to promote the establishment of an appropriate “gateway sculpture plaza” to commemorate Dr. Martin Luther King Jr. and his legacy. The current concept for the new plaza is to complement the various nodes and points of interest along the Lincoln Avenue corridor from I-74 exit to Windsor Road. One of the existing elements of the corridor is the Hallene Gateway—the symbolic entrance into the University of Illinois campus. Other opportunities exist for additional nodes and gateways.

### **Project Objectives**

- ❑ On-site inventory and analysis of existing conditions—Lincoln corridor, park and neighborhood
- ❑ Identify “community character/neighborhood context” for design purposes
- ❑ Create a concept and vision for the proposed gateway plaza commemorating Dr. King
- ❑ Prepare scale drawings and other graphic representations to clearly represent and promote your interpretation of the gateway concept

### **Project Sequence and Deliverables**

Representatives from the Urbana Park District, Urbana Arts Commission, and the Department of Landscape Architecture will serve as the “client” for this project. Expect review teams to evaluate your work throughout the process.

The process is iterative and requires you to consider multiple scales and level of detail. It will be completed in 2 phases:

- Phase One – team analysis of corridor, neighborhood, and site and design framework for park
- Phase Two – independent design of smaller area (MLK Plaza) and park master plan

### ***Phase I – Community Context, Corridor Study and Neighborhood Interpretation***

The first phase requires you to quickly get an understanding of context and site and make some initial proposals for design intention and programming. In groups of 3-4 students, you are expected to complete the following:

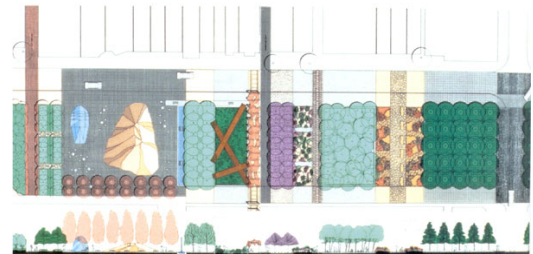
- ❑ **Corridor Transect Analysis**: Develop a Lincoln Avenue corridor analysis that includes the street, the assumed ROW, circulation, and enough area to explain contiguous land use, character, and context. Include and consider the Lincoln Avenue corridor from I-74 to University Avenue and University Avenue to Windsor Road. Indicate graphically how your group interprets the opportunities, challenges, and other factors that influence the character and movement along this corridor.
- ❑ **Gateway Concept**: Based on the transect analysis, develop a design concept for the corridor that identifies important aspects/elements/nodes/etc. to make this gateway concept readable/interpretable. The transect analysis and concept may be shown on one graphic or on 2 related graphics. Do not simply include photographs or maps that you gather, but instead layer your analysis, interpretation, and design ideas onto aerial photographs, diagrams, photographs or other materials, or redraw to clearly emphasize your point.

- **Neighborhood and Park Analysis and Assessment:** Provide a more inclusive view of the park and adjacent area (avoid a narrow, glossing-over of obvious elements). In the area that extends roughly ¼ mile from each of the park and/or school’s boundaries, choose appropriate edges to include enough context (land use, character, potential user needs, etc.) and access considerations. Incorporate a site analysis of the park site as well. Factors you may want to investigate and analyze include: hydrology, soils, topography, circulation, access points, linkages/trails/connections, adjacent land uses, parking opportunities, social patterns, school-park relationships, future development proposals/possibilities, etc.

Assume the Park District will acquire additional property to extend the park from Lincoln Avenue west to Goodwin Avenue and along Lincoln Avenue to allow full consideration of park expansion to further connect the park/school concept.

You may want to consider the 2007 Urbana Park District Strategic Plan ([http://www.urbanaparks.org/documents/df221afe887d1f1242897b66d547984f/Urbana\\_Park\\_District\\_Strategic\\_Plan-Summary\\_Report.pdf](http://www.urbanaparks.org/documents/df221afe887d1f1242897b66d547984f/Urbana_Park_District_Strategic_Plan-Summary_Report.pdf) ) and or the 2005 City of Urbana Comprehensive Plan (<http://www.city.urbana.il.us> Quick Link – 2005 Comprehensive Plan)

- **Park Design Analysis and Framework:** With the corridor transect and neighborhood and park inventories in mind, indicate design implications that respond to the identified conditions. This should relate strongly to a design framework for the park. The design analysis should include graphic representations of design concept, programming elements, and gateway concept. The resulting design framework should align with the individual team member’s concepts for later independent work. This should be represented at 1” = 50’.
  - Assume the UPD will acquire the property to the west
  - Assume the pavilion, playground, healthy trees/vegetation will remain in the park at the same location—other elements can be relocated and new programming proposed
  - Address general programming concepts: active recreation, children’s play, passive areas, views, etc. You do not need to specify programs at this time.
  - Consider opportunities to strengthen the park/school concept
  - Make sure to identify the location for the Martin Luther King Jr. Plaza.
  - Address circulation and access



Phase One is due Monday, Oct. 5 at 2:00. Work should be presented on 1 board 24 x 36 (2 boards or larger if appropriate). Make sure to include all students’ names on the board. Also submit work as pdf into class folder (“Proj3\_[last names]”). We will have a pin-up in which invited reviewers and students will critique work and discuss the next phase of design.



## ***Phase 2 – Conceptual Master Plan and Sculpture Plaza***

Using the analysis materials you developed with your team, it is time to begin *independent* work. Break apart what is inventory from what is truly analysis that conveys design and programming decisions. Based on feedback in the phase 1 pin-up, do you see opportunities to re-think the design analysis and framework? Are there other sources/design inspiration you want to bring into the project? How do you take the context analysis to the next level so that it clearly conveys your emerging concepts?

- **King Park Conceptual Master Plan:** Develop an illustrative master plan concept, at approximately 1" = 50' or other appropriate scale (depending on your layout decisions) of the park site; include enough detail of adjacent land uses to support/enhance your site plan. You should use your team's design analysis and framework as a starting point but with further revision/development based on the pin-up and your ongoing study/evaluation of the site and its opportunities.

The conceptual master plan requires more specifics in terms of programming. Assume the pavilion, playground, healthy trees/vegetation will remain in the park at the same location—other elements can be relocated and new programming proposed. You may want to consider adding the following items within the new park boundary – you can decide which elements, their relationships to each other, and how many fit your plan best.

- Basketball Court(s)
- Volleyball Court(s)
- Comprehensive Trail System that provides park/school/ neighborhood access; connection to the Goodwin Ave.; multiuse path; etc.
- Sprayground
- Community Gardens
- Arts/Performance Area for park events
- Nature Play
- Other features that support your Community Park

Include a minimum of 2 support representations of master plan. You should consider the use of perspectives that include people representing programmatic uses, sections if you manipulate topography or have vertical elements, birds-eye perspectives, diagrams, etc.

Pin-up of draft conceptual plan on Monday, Oct. 12. Pin-up will be conducted in small groups to allow other students to continue working. Note that comments made in pin-up should be addressed prior to final review.

- **Martin Luther King Jr. Plaza:** Develop a design for the plaza area, to be shown at approximately 1" = 8'. Locate this on your master plan and explain in a caption or annotation on the drawing itself how it conveys your unique concept/proposal. Include enough area to make the drawing useful and to show context. This is a critical element in your overall presentation! The park area near Lincoln Avenue is the intended location for this, but you may choose a different location as long as it is clearly recognized as a gateway (visible, meaningful, supported by the neighborhood, etc.).
  - Develop an image and profile for Dr. Martin Luther King Jr. – life, legacy, inspiration, and vision that clearly supports/defines your concept plan and can support your final conceptual master plan/sculpture plaza design

- The plaza must include sculptural element(s) that conveys the life/work of Dr. King.
- The plaza must be designed to be of interest to people driving along the road and pedestrians coming up close to be in the plaza.

Include at least 2 support representations for the sculpture plaza. These might be sections, perspectives, birds-eye, axonometric, images from models, etc.

Pin-up of draft design for sculpture plaza, Friday Oct. 16. Pin-ups will occur in smaller groups to allow rest of class to continue working. Note that comments made in pin-up should be addressed prior to final review.

### **Final Review**

Our final review will be conducted at the Urbana Council Chamber or Civic Center on Friday, Oct. 23, from 2:00 – 5:00. Please have all work mounted on foam core and be at the site before 2:00 for posting. Your verbal presentation time will be very limited and your work will need to be readable from a distance. While we have set minimum requirements, you need to seriously decide what is the best way to communicate your design intent—you are the designer and can decide what “sells” your vision. You may exceed the recommended requirements.

Submit all digital work to class folder by 2:00 on Friday, Oct. 23, 2009 as a PDF that has “Proj3\_{your name}.”

### **Schedule for Project 3.** *Please note changes from schedule in syllabi.*

|                 |   |
|-----------------|---|
| Mon., Sept. 28  | On-site visit; corridor assessment, neighborhood walk; collect photos, images community context, image...share this info      |
| Wed., Sept. 30  | Studio work day—analysis, group work  |
| Fri., Oct. 2    | Guest lecture: Anna Hochhalter, Urbana Arts Coordinator for Urbana Arts Commission, 2:00-3:00.<br>Followed by studio work day |
| Mon., Oct. 5    | Lecture: Park Models/Frameworks<br><b>Phase I Group Project Pin-up</b> (entire class participating, 3-4:50)                   |
| Wed., Oct. 7    | Lecture: Parks, Gateways, Public Open Space<br>Desk crits (Tim not in class)  |
| Friday, Oct. 9  | Lecture: Sculpture, Siting, and Materials (Tim)   |
| Mon., Oct. 12   | <b>Pin-up of conceptual master plan</b> (in groups)   |
| Wed., Oct. 14   | individual work/ desk crits as requested (Laura not in class)   |
| Fri., Oct.16    | Lecture: Streets and Streetscape;<br><b>Pin-up of MLK sculpture plaza</b> (in groups)   |
| Mon., Oct. 19   | individual work/ desk crits as requested  |
| Wed., Oct. 21   | individual work/ desk crits as requested  |
| Friday, Oct. 23 | <b>Project 3 – Final Review</b>   |



LA 335: Community and Open Space Design

Fall 2009

Instructors: Tim Bartlett and Laura Lawson

**King Park – Dr. Martin Luther King Jr. Gateway Plaza Review**

Wednesday, October 28, 2:00 – 5:00

City of Urbana Council Chambers, 400 S. Vine Street

Procedure: 2 minute presentation by each student in team  
Approx. 10-12 minutes for questions/comments to entire group  
Final comments and discussion at end

2:00 Tim Bartlett introduces project and site

---

2:05 – 2:25 Darren Leonardi  
Camille Tan  
Kate Amoruso  
Dan Kim

---

2:25 – 2:40 Miguel Ruiz  
Kevin Wiley  
Katie Pitstick

---

2:40 – 2:55 Mike Wood  
Jordan Cline  
Anna Langenfeld

---

2:55– 3:15 Valerie Brej  
Jen Czaja  
Kat Katsma  
Taylor Pattermann

---

3:15 – 3:30 break (unless running late)

---

3:30 – 3:50 Kassie Hoffman  
Luke Baldwin  
Tim Jung  
Jeff Norberg

---

3:50 – 4:10 Brian Goettel  
Cynthia Gonzalez  
Tum Suppak  
Reuben Waddy

---

4:10 – 4:30 Jared Correa  
Chandler Womack  
Jason Schroen  
Mark Speers

---

4:30 Final comments by reviewers as time allows

4:50 Exit chambers



# KING PARK

## PHASE 2: MASTER PLAN & SCULPTURE PLAZA

Location: Urbana, Illinois  
Size: Approx. 6 acres

**Park Concept: Multicultural Quilt**  
The idea that a multicultural community is like a quilt, where the fabrics become the people. The strength and togetherness of the community become the threads that provide the stitching.

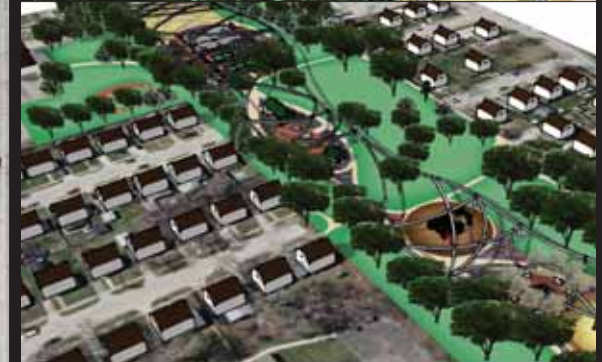
- Program:**
- To provide spaces for both passive and active recreation
  - To create an overhead lighting scheme that represents the stitching of the community
  - To provide functional aesthetics where art is integrated into the park in an interactive way



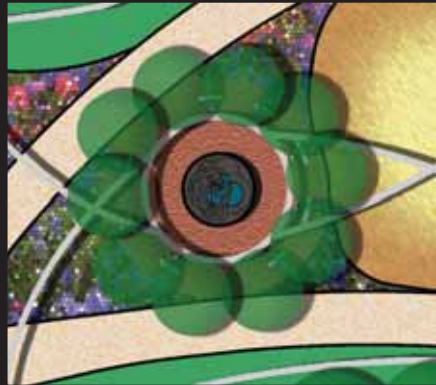
West facing bird's eye perspective



Master Plan of King Park at 1"=70'



Top: SE perspective view, Bottom: NW bird's eye



MLK-Jr Sculpture Plaza at 1"=18'



West facing perspective of the sculpture plaza



Detailed view of sculpture fountain and artist murals

# KING PARK: DR. MARTIN LUTHER KING JR. GATEWAY PLAZA

CAMILLE ANN TAN  
LA 335 FALL 09

## EXISTING SITE

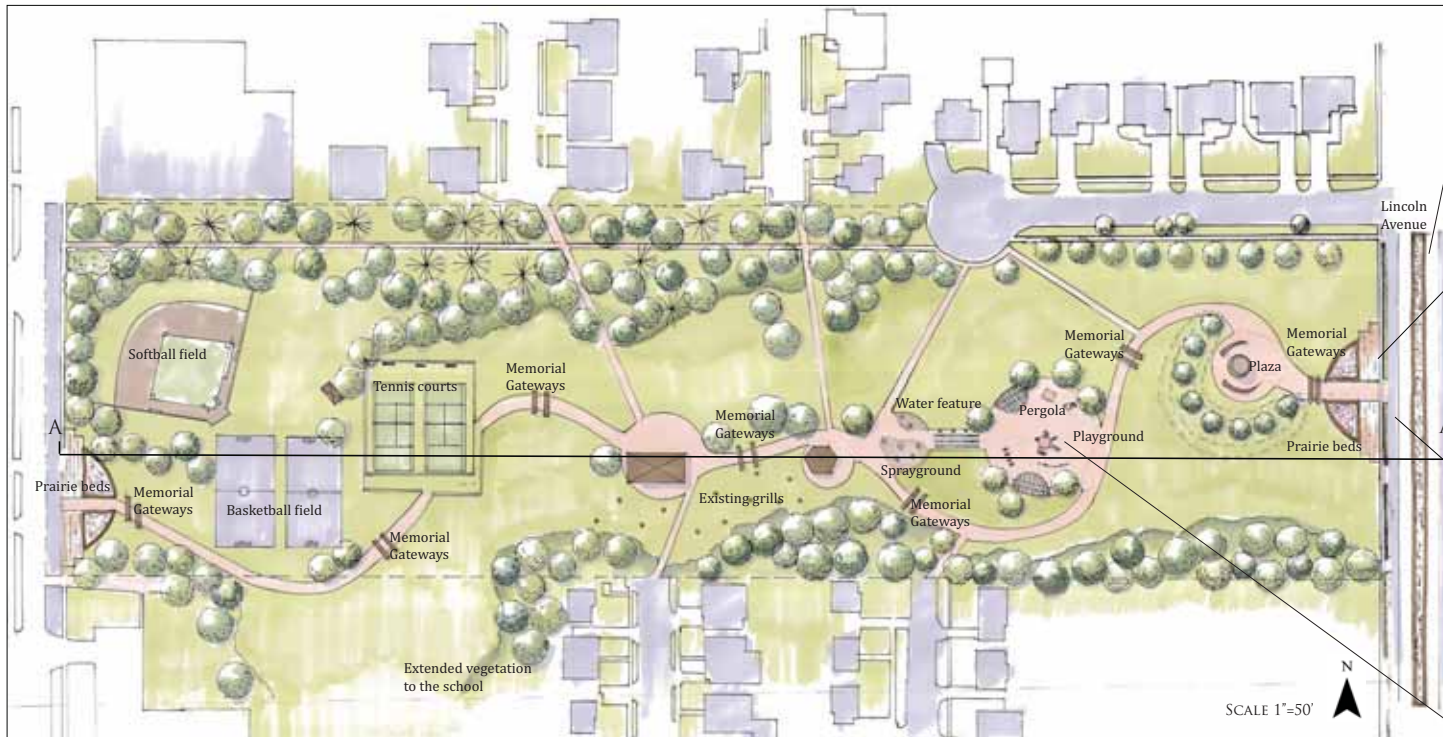


Lincoln Avenue is known as being the "gateway" to the University of Illinois at Urbana Champaign campus. The King Park in Urbana, Illinois is intended to be a "gateway sculpture plaza" for it. To keep up with the ongoing development and improvements to the campus and the city, a new "entrance" should be made. This new design of the sculpture plaza will be a great addition to the gateway.



## MASTER PLAN

The King Park offers 6 acres and is surrounded by 4 neighborhoods. This park is identified as a "community park" in the Urbana Park District offering programming and services to its surrounding community. The new design for the King's Park is intended to not only set a gateway to the University of Illinois Campus, but hopes to bring its surrounding community closer through its dynamic programming, facilities, and sports ground that will be available.



Sources: Google Earth, <http://www.infoplease.com/spot/mlkquotes.html>  
City of Chico, CA: [http://www.chico.ca.us/arts\\_commission/mlk\\_monument.asp](http://www.chico.ca.us/arts_commission/mlk_monument.asp)



# KING PARK REDESIGN

KATEAMORUSO

LA 355  
SPRING 2009  
1/1

## KEY

RAIN GARDENS



EXISTING DECIDUOUS TREES



NEW DECIDUOUS TREES



EXISTING EVERGREENS



NEW EVERGREENS



ORNAMENTAL TREES



FLOWER BEDS



VIEW INTO COMMUNITY GARDEN FROM THE CENTER PLAZA



VIEW OF SPRAYGROUND IN THE SUMMER



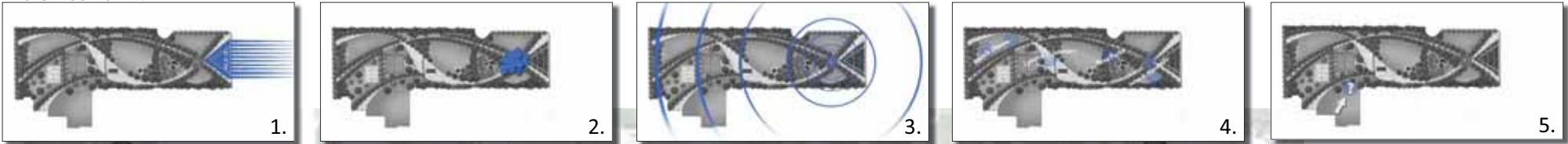
MLK JR. PLAZA

# KING PARK

## CONCEPTUAL MASTER PLAN



### DESIGN CONCEPT:



### Master Plan

0' 50' 100' 200'

Scale: 1 in. = 50 ft.





# KING PARK

## MASTER PLAN & SCULPTURE PLAZA

JOSE MIGUEL RUIZ  
UNIVERSITY OF ILLINOIS  
LANDSCAPE ARCHITECTURE 335

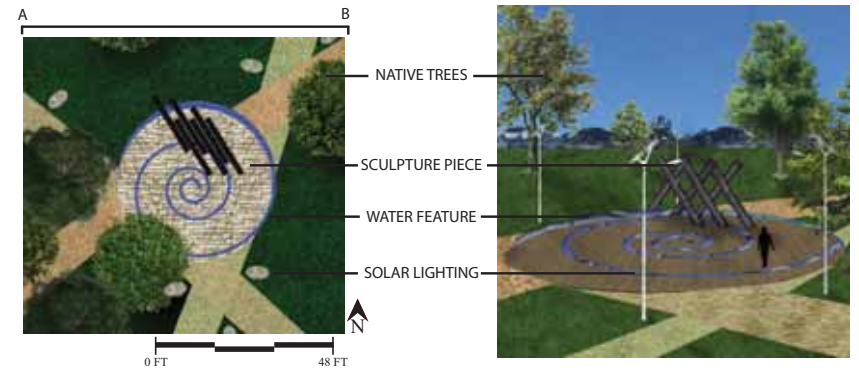
### CONCEPT: CONNECTIVITY

### PARK MASTER PLAN



### SCULPTURE PLAZA

The sculpture piece consists of black steel poles that intersect at an angle and point towards the sky. Their meeting point symbolizes our progress today, while the pieces below represent our past, and the pieces above represent our future progress. This sense of progress and connectivity echoes important aspects of Martin Luther King Jr's values and teachings. Each of the steel poles is also inscribed with his quotations relating to community and brotherhood.



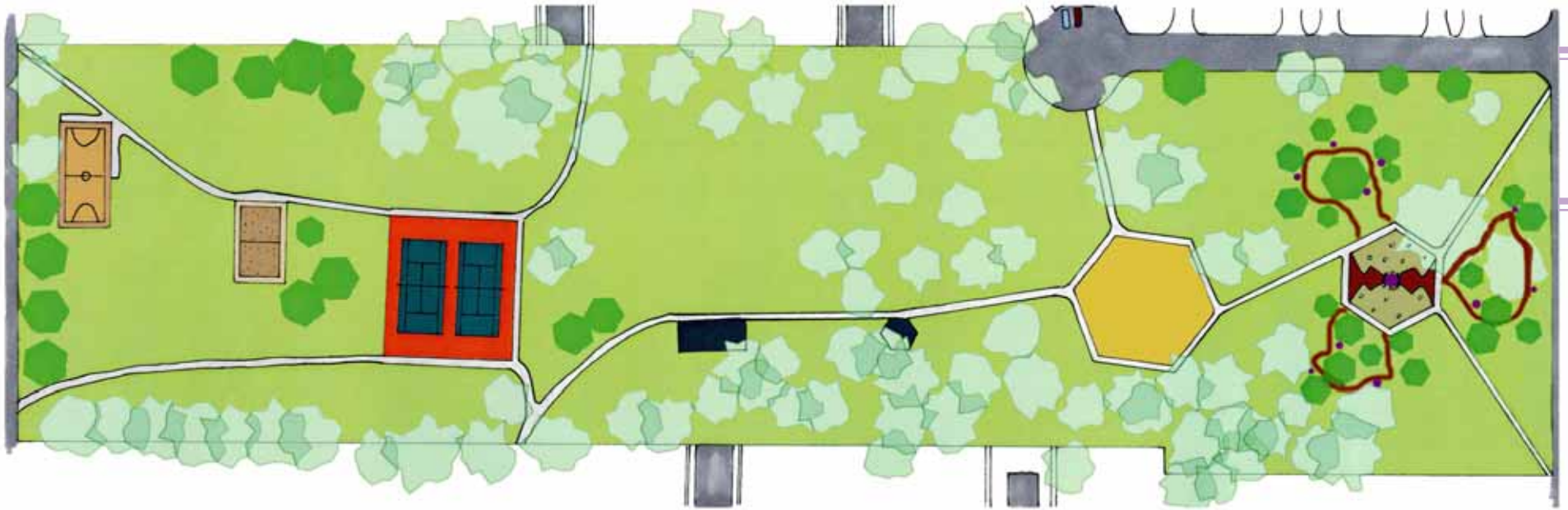
LOWERED AMPHITHEATER



TALL GRASS PRAIRIE



PLAYGROUND



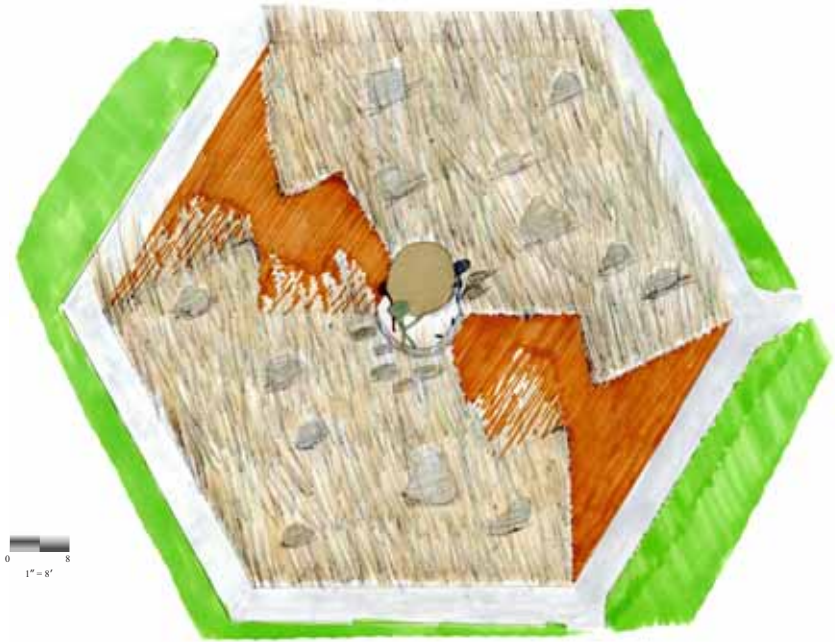
**Cultural Art Grove**

Visitors to the park can take a walk through the Cultural Art Grove to see examples of artwork from around the world. Flowering trees line the paths providing a variety of colors through the season. Annual beds may also be planted around the artwork or between the trees.



**Martin Luther King Plaza**

Take a walk through Martin Luther King Jr.'s dream. As you walk past the surrounding cloud of ornamental grasses, you can see children of different origins, made from copper, steel, and aluminum, gathering together to take care of the world. The space left between the two children encourages visitors to take a turn holding their share of the world.



# Martin Luther King, Jr. Park Urbana, IL

Kevin Wiley  
LA 335 10/28/2009

# MARTIN LUTHER KING PARK

URBANA, IL

## MASTER PLAN AND SCULPTURE PARK

MIKE WOOD  
LA 335  
FALL 2009



- PARK FEATURES:**
- Sculpture park
  - Playground
  - Pavilion patio
  - Tennis courts
  - Native prairie
  - Interactive landforms

- SCULPTURE PARK:**
- Interactive gateway featuring many different materials
  - Abstract sculptural elements that represent the principals Martin Luther King preached
  - Mural wall that will be repainted every year on MLK day



View North past the pavilion pation



Martin Luther King Mural Wall



View North to students sitting on the berm





### Timeline Walkway

|   |                        |                           |  |
|---|------------------------|---------------------------|--|
| 1 | Montgomery Bus Boycott | Japanese Maple            |  |
| 2 | SCLC Creation          | Ginkgo                    |  |
| 3 | Albany Movement        | Freeman Maple             |  |
| 4 | Birmingham Campaign    | Crimson King Norway Maple |  |
| 5 | March on Washington    | Kousa Dogwood             |  |
| 6 | Augustine and Selma    | Chanticleer Callery Pear  |  |
| 7 | Bloody Sunday          | Apple Serviceberry        |  |
| 8 | Chicago Protests       | Star Magnolia             |  |
| 9 | Poor People's Campaign | Paperbark Maple           |  |

My design for Martin Luther King, Jr. Park commemorates all of the important things that he did for the Civil Rights Movement. All nine events that I have highlighted are engraved into plaques along the walkway. Each event is surrounded by a different type of ornamental tree. After one walks past the last event from Dr. King's life, the walkway then turns into plaques with the names of those from the community or town that did something good for civil rights or something that helped the community. After the last local plaque the pathway turns into mulch so that plaques can be added and ask the person walking through the space what he or she can do to become a part of this walk. I have also added basketball courts as they seemed to be preferred by many kids living near the park. I also put a vegetable garden close to the school to give the children a valuable learning experience.

**Plaza Axon**



**Plaza Sculpture**



**West Side of Plaza**



**East Side of Plaza**



### Pathway Plaques

This is an example of what the plaques on the walkway will look like. This plaque is representing the first important event that Martin Luther King, Jr. was involved in, the Montgomery Bus Boycott.





Pavilion Plantings



Community Garden and Children's Biology Garden

# King Park Plan

Urbana, IL

Anna Langenfeld LA 335

Professors Lawson and Bartlett

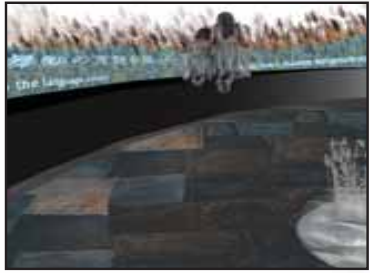
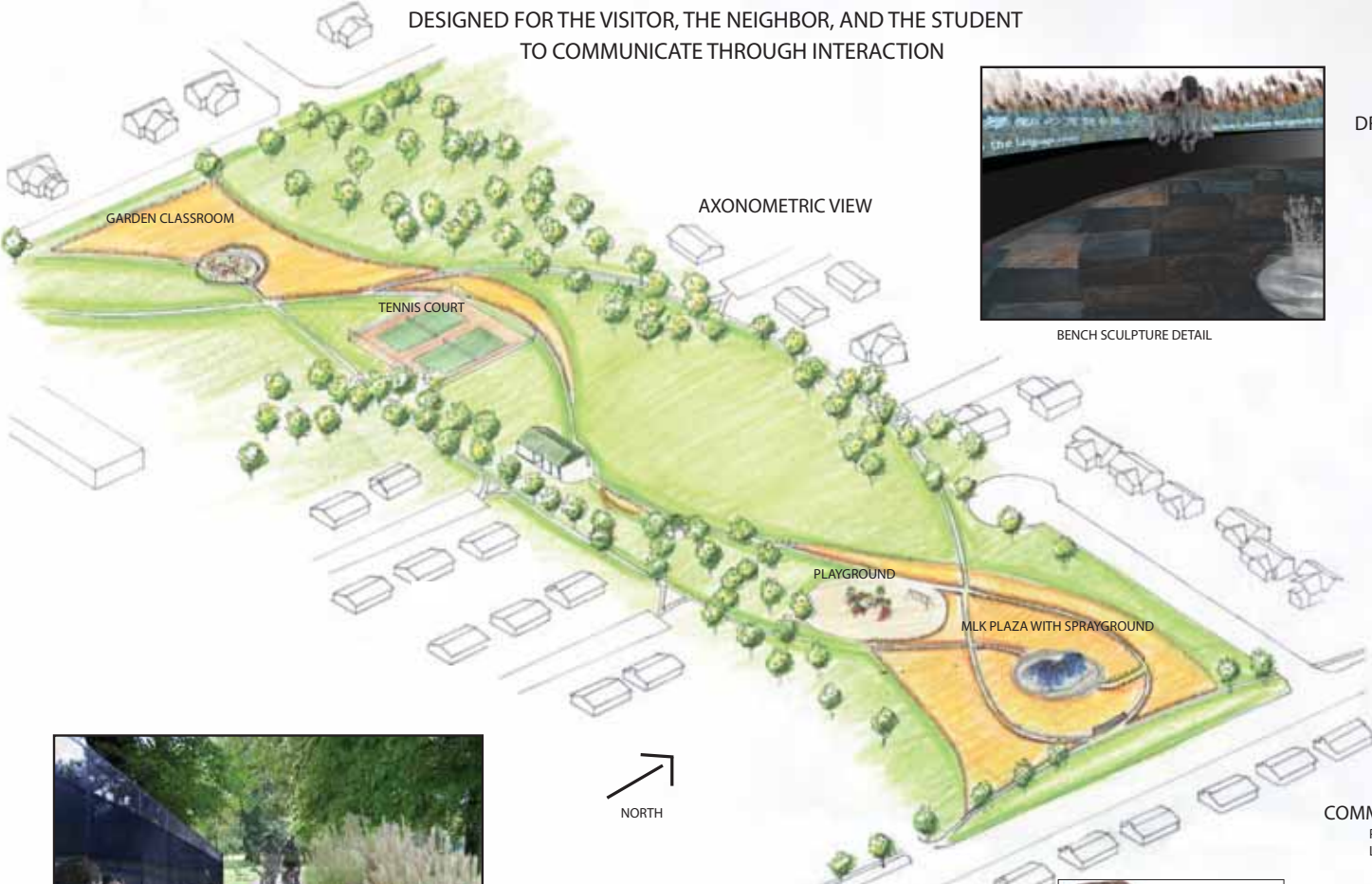
10/26/09

# KING PARK

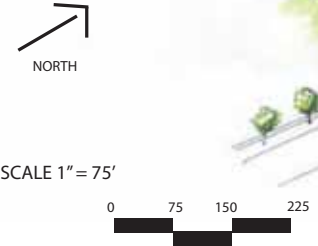
URBANA, IL

VALERIE BREJ  
LA 355 FALL 09

DESIGNED FOR THE VISITOR, THE NEIGHBOR, AND THE STUDENT  
TO COMMUNICATE THROUGH INTERACTION



DR. MARTIN LUTHER KING JR. GATEWAY  
*"A Riot is Language unheard" -MLK*



COMMUNICATION THROUGH INTERACTIVE PLAY ELEMENTS  
PLAYGROUND FEATURES AFFECT SPRAY GROUND ELEMENTS AND THE  
LIGHTING DISPLAY IN THE GARDEN CLASSROOM



# King Park

# Preserving a Memory

Urbana, IL

Jen Czaja

LA335

### Master Plan

This redesign of King Park is both a memorial and a prairie preservation site. The memory of Martin Luther King's dreams for a better tomorrow and the natural beauty of the prairie combine to create a cohesive mix of social justice and environmental renewal. The changing of the grasses will also connect with M.L.K.'s vision through the flowering in the summer, the drying and browning in the fall, death in the winter, and rebirth in the spring. This ties together both his religious background in the biblical tale of Jesus and in his fight for civil rights. Though there are many King memorials and parks, this park will become a jewel in the eyes of local residents and University visitors.



### Memorial Gateway/Statue



"Ladders to Equality" is a simple, large scale piece that represents the struggle for any group of people to achieve the civil rights they deserve, not matter what race or creed. Martin Luther King Jr. was a visionary, but he needed the support of his community so their voices could be heard. This sculpture embodies these thoughts of community and brotherhood through repetition.

It is large scaled to interact with passing cars on Lincoln Ave., but still attracts viewers on the pedestrian level.

### Prairie grass mown path

At the west end of the park, the area that was once a moderate industrial site will become a naturalized prairie. Within this section, mown paths will create a maze like area for school children and visitors. This area will represent the native prairies that once dominated the landscape and show the beauty of the grasses through the seasons.



### Bike Path

Diagonally cutting through the site, the 12' wide bike path allows for quick transportation and safety for both the biker and walkers alike.



Ladders to Equality

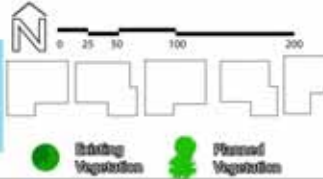
# King Park

Urbana, IL

Katarina Katsma

10.26.09

## Final Design



The design of King Park is the reinvention of simple yet elegant, with gracefully winding paths and park features that reinforce this concept. The MLK plaza is set 20 feet back from Lincoln Ave with up to 5 feet tall, undulating mosaic walls portraying MLK's life through quotes and pictures. These walls created by the community act as a backdrop to the sculptures representing MLK's "Dream". Along the practical yet simple porously paved paths are small scale mosaic walls that mimic that of the MLK plaza, tying this theme with the rest of the park.



Nature Play



MLK Mosaic Sculptural Memorial Walk



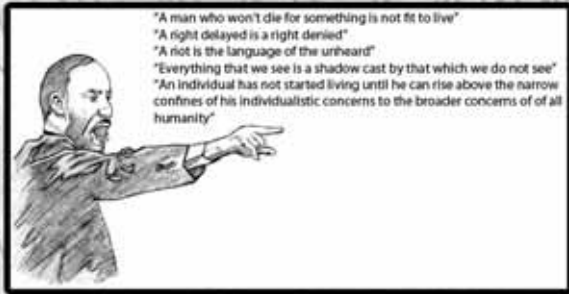
Outdoor "Amphitheater"



Sculpture and quotes of MLK set into mosaic walls on walls and ground - copper coated

# King Park - Urbana, Illinois

Taylor Pattermann LA 335



Martin Luther King Jr. Statue



Martin Luther King Jr. Plaza 1" = 8'



Green Wall

# King Park Master Plan

The design of King Park is meant to bring the community together, and includes a community garden center, pavilions, and a performance and arts center. A wide mosaic path sweeps through the site, with more intense mosaic design in the gathering centers, and colored concrete pavers on the rest of the path. Secondary paths connect the neighboring streets to the park. The sculpture plaza is located on Lincoln to act as a gateway to King Park and the university to drivers, and the community garden center provides a grand entrance to the park on the west side.



Community garden center



Inside of community garden center



Section of Performance & Arts Center

## Martin Luther King Jr. Plaza

The sculpture plaza consists of a hierarchy of pathways through layers of vegetation, leading to gathering areas from where sculptures can be viewed. The sculptures act as a gateway to a research institution as well as commemorate Dr. Martin Luther King Jr.'s stance on equality in a modern sense by reflecting the power of alternative energy sources, which can someday provide cheap and free energy to everyone. The main sculpture is inspired by the sculpture 'El Alma del Ebro' by Jaume Plensa, and wraps MLK quotes around the shape of his body. The sculpture is connected to pavement blocks that create energy to light the sculpture when stepped on, inviting interaction, as the sculpture changes colors with the different colored blocks.



Varying heights and colors of vegetation



'Groundbreaking' sculpture  
Inspired by sculpture in Paris



Sculptural lighting at night



Martin Luther King Jr. Sculpture  
Inspired by the sculpture 'El Alma del Ebro' by Jaume Plensa



Interactive Wind Sculptures  
From Discovery World Sculpture Park at Pier Wisconsin, these sculptures can be turned by people as they shimmer in the wind.



0 20 40 80 100

Luke Baldwin  
Scale 1"=50'

Bartlett, Lawson  
LA 335

# King Park Master Plan

10/26/09

Bioswale provides habitat opportunity while diverting street run-off

Oak Savana

Board walks provide interest and maintain park visitor comfort durring and after a storm events

Rain Gardens add aesthetic and run-off from neighborhood streets collected and absorbed

King School



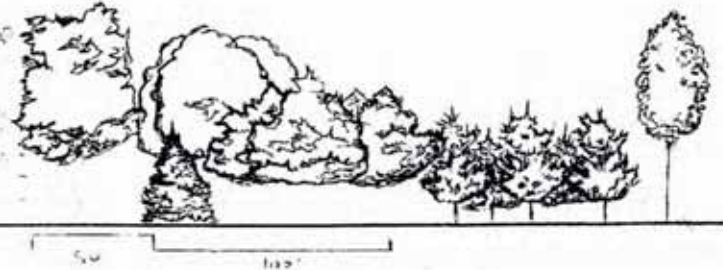
This design ensures a valued open space for the urbana community and embraces Martin Luther King as a individual that inspired the world

The west side of King park is dedicated to three types of prairie.

Moving east to west is a short grass prairie, mixed grass prairie, and finally over a small hill to a tall grass prairie

Before each prairie are monoculture plantings of species typical to that prairie that can be gathered and used for seed stock

## Lincoln enterance transect

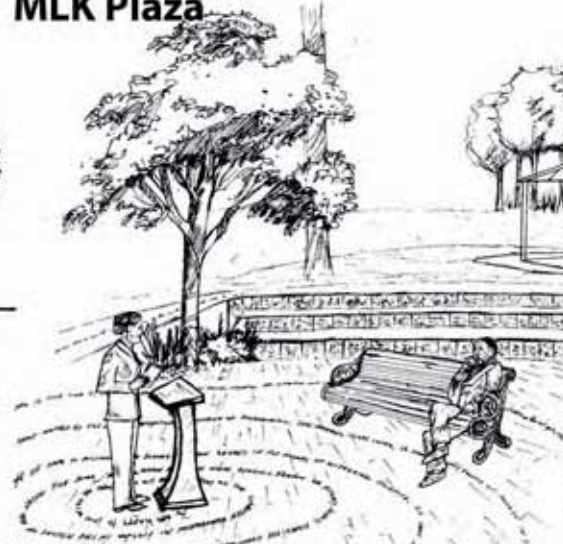


Converging pathways off lincoln avenue display forest succession

Moving west to east the forest evolves from fast growing poplar trees, to a jack pine forest, to the oak-hichaory climax vegetation

As the paths converge into one the tree grid fades into the diversity of over 35 different tree species already present in the park

## MLK Plaza



King plaza is a amplitheater for gathering crowds, and also a great place to relax and reflect

## Winter perspective into MLK plaza

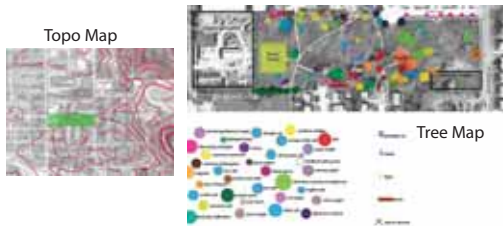


Durring the winter the plaza is flooded and functions as a ice rink



**The Challenge:** To create a park that would both serve as a useful open space for the King Park community as well as act as a memorial to commemorate Dr. Martin Luther King and all that he stood for through an artistic measure.

**The Opportunities:** Proximity to an already prosperous Crystal Lake Park and along the Lincoln corridor means that this park is easily viewable and possible users are plentiful. The park also is adjacent to King School which celebrates its diversity with over 30 different languages spoken there.



**The Statues:**



Walking in Dr. King's Dream: A board-walk takes viewers to different sculptures symbolizing pieces of Dr. King's famous speech, "I have a Dream".

# King Park - MLK Gateway Plaza

## Conceptual Master Plan and Sculpture Plaza

Jeff Norberg  
 LA 335: Community Design Studio  
 Lawson + Bartlett, 10/09



MLK Sculpture Plaza

- MLK plaza is equipped with free WiFi as well as internet accessible computer terminals
- Through a proposed internet/school program, the ethnically diverse student population of MLK Elementary will have the opportunity to communicate with other students of their home country, face-to-face



**View from West entrance**

- The Peace Sign faces MLK Elementary and welcomes visitors to the park
- An educational garden plot for students stands with larger experimental plots for testing the effectiveness of different prairie types in suburban settings



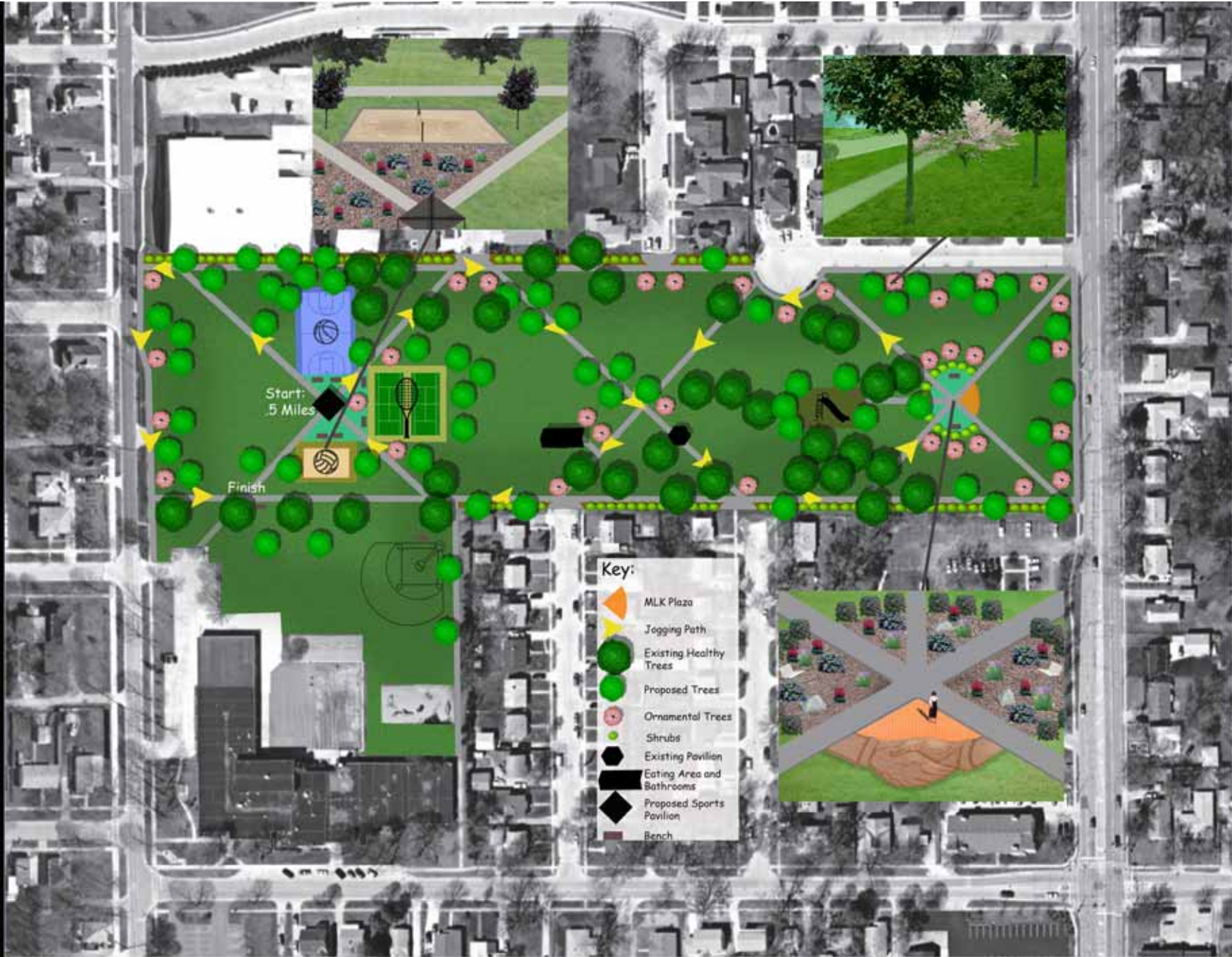
**View of central pavilion**

- Existing structures remain and are completed by an oval plaza
- This is a communal sitting space and includes a water feature/sprayground for children
- This space can also become event space on Jetti Rhodes Day



**Lincoln gateway sculpture**

- The open palm symbolizes tolerance, brotherhood and non-violence; the message of Martin Luther King Jr.
- The sculpture shows the way to a multiracial, ethnically diverse community; the Global community



- Key:**
-  MLK Plaza
  -  Jogging Path
  -  Existing Healthy Trees
  -  Proposed Trees
  -  Ornamental Trees
  -  Shrubs
  -  Existing Pavilion
  -  Eating Area and Bathrooms
  -  Proposed Sports Pavilion
  -  Bench



King Park Design

Brian Goettel



**“Let Freedom Ring”**  
**Martin Luther King Jr.**  
**1929-1968**

# MARTIN LUTHER KING PARK

## Design

Cynthia Gonzalez: FALL 2009

Conceptual Diagram Commemorating August 28th, 1963



Axon View into Plaza Area



Spiritual Voice Plaza



Sculpture of 1963 Citizens



Spiritual Voice Plaza Plan

Pedestrian reclamation of Neighborhood Streets



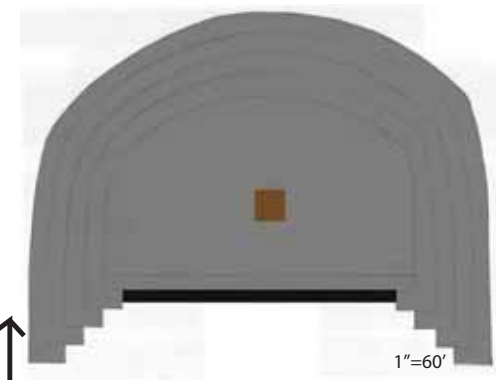
The inspiration for MLK Park came directly from the “I have a Dream” speech. Since Mr. King’s beautiful dreams and ideals have been realized this plan was converted into the physical form of his speech. The Plaza located on the far west side of the park symbolizes the Lincoln Monument where MLK gave birth to one of the most influential speeches in U.S history. His voice is made physical through a sculpture of chimes. As his voice echoes and carries through the rest of the park sound waves can be seen in there physical form by the arching paths and vegetation. The waves also symbolize the “Sea of People” which were at the speech. The plan is porportional to the dimensions of the real Lincoln Monument and Reflecting Pool.



1"=75'



Dust View into Park



1"=60'

# K I N G P A R K

Urbana, IL

MARTIN LUTHER KING PLAZA



THE SEAT



THE ENTRANCE



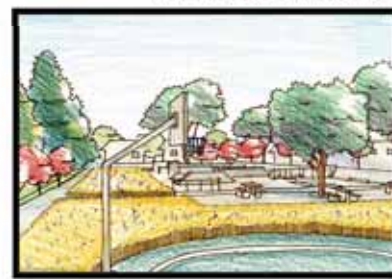
*TOWARD THE BELOVED COMMUNITY...*



THE GREAT LAWN



THE ACTIVE SPOT



THE PLAY AREA



*...WE HAVE THE DREAM*

TUM SUPPAK  
LA335 Fall 2009

# KING PARK MASTER PLAN URBANA, ILLINOIS

**RAIN GARDEN:**  
BEAUTIFUL AND EFFICIENT  
SOLUTION FOR PROPERTY  
DRAINAGE

"We must learn to live together as brothers  
or perish together as fools."



**KING PLAZA:**

A COMMON GROUND FOR PASSERBYS  
TO GATHER. SPACIOUS ENOUGH FOR GROUP  
ACTIVITY; ALSO ALLOWS INDIVIDUAL SPACE.

"We may have all come on different ships,  
but we're in the same boat now."



**WELCOME  
PLANTER:**  
SAME AT  
UNIVERSITY-  
NEIGHBORHOOD  
CORRIDOR  
ENTRANCES



**KING MEMORIAL:**

THE DIVISION OF LIGHT AND  
DARK COLORED BEDS  
REPRESENT MLK'S SEGRE-  
GATED STRUGGLES. THIS  
PEACEFUL OUTDOOR ROOM  
LEADS TO KING'S  
PLAZA, WITH EDUCATIONAL  
CUES ALONG THE TRANSITION.

ROUND  
BENCHES  
AROUND  
TREES



**KING ELEVATION:**  
WE REACH MLK'S MILESTONE.  
THE HILL (25') IS USED FOR  
SLEDDING ON BOTH SIDES  
AND IS ALSO THE HIGH POINT  
OF THE PARK, CREATING A  
GREAT OVERLOOKING VIEW

"We must use time creatively."

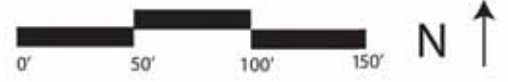


**COMMUNITY/SCHOOL  
GARDEN:**  
GARDENING/FARMING  
PRACTICES



**DREAM GARDEN**

A ELEGANT WALK INTENDED TO ENLIGHTEN THE  
SENSES AND ESCAPE THE URBAN SURROUNDINGS  
"At the center of non-violence stands the principle of love"



JARED CORREA  
OCTOBER 26, 2009  
LA 335 STUDIO

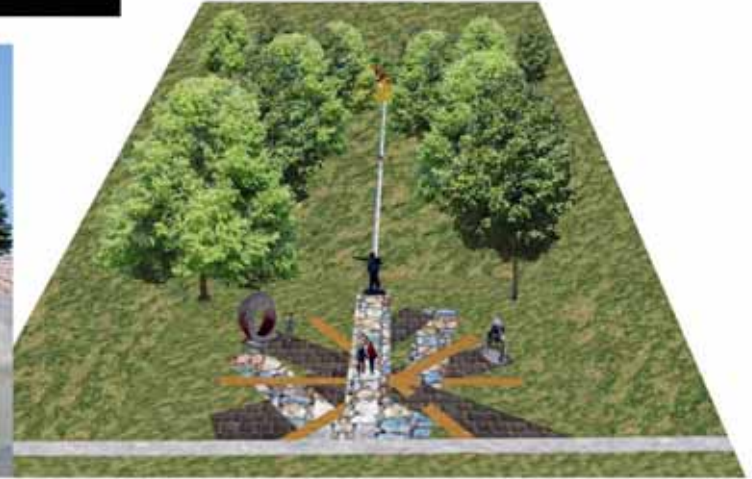
# King Park Master Plan



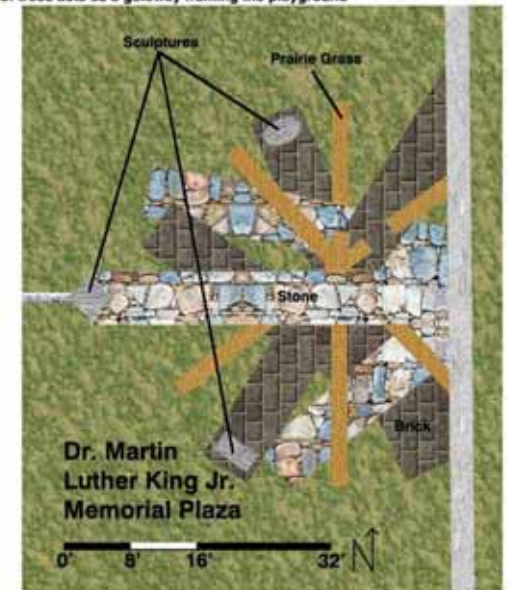
1. View into nature room. Gives a sense of privacy and enclosure in the landscape.



2. Children playing in the sprayground area. Easily monitored by parents from the seating walls.



Aerial view from above Lincoln Ave. into the park through the sculpture plaza. The allee of trees acts as a gateway framing the playground



Chandler Womack  
University of Illinois  
Landscape Architecture 335

# KING PARK MASTER PLAN

URBANA, IL

JASON SCHROEN  
LA335  
10/28/09



ENTRANCE FROM LINCOLN AVE



MLK PLAZA



STAGE AREA WITH PODIUM, STUDENT MURAL,  
NATIVE SCULPTURES THROUGHOUT PRAIRIE

RECREATION AREA



SKATE PARK, BASKETBALL COURTS, TENNIS COURTS

PLAY AREA



NEW PLAY EQUIPMENT, SEATING AREA, NEW FORM

## CELEBRATING DIVERSITY

- THE LEGACY OF MARTIN LUTHER KING
- KING SCHOOL
- THE COMMUNITY OF URBANA





ORCHARD, GRAPE VINE PERGOLA, AND COMMUNITY PLOTS PROVIDE NEIGHBORHOOD WITH ACCESS TO LOCAL PRODUCE AND GARDENING OPPORTUNITIES. ALSO, THE SPACE ALLOWS FOR STUDENTS FROM KING SCHOOL TO EXPERIMENT WITH GARDEN PLANTS AND TECHNIQUES

OPEN GRASS FIELD FOR ACTIVE RECREATION

PLAYGROUND INCLUDES A SPRAY GROUND PROVIDING FURTHER COMMUNITY RECREATION OPPORTUNITIES

PLAZA PROVIDES VISUAL GATEWAY FROM LINCOLN AVE. INTO THE PARK. THE SCULPTURE PROVIDES INFORMATION OF MARTIN LUTHER KING JR.'S LIFE AND MESSAGE

OAK SAVANNAH PROVIDES A UNIQUE EXPERIENCE FOR THE COMMUNITY INCLUDING CLEARINGS WITH TABLES AND GRILLES FOR OUTDOOR PICNICS AND GATHERINGS

RIPPLE BERMS REPRESENT THE IMPACT JUST ONE PERSON CAN HAVE WHILE PROVIDING AESTHETIC TOPOGRAPHY FOR CHILDREN'S PLAY

KING PARK MASTER PLAN

0' 60' 120' 240'

SCULPTURE PLAZA PLAN VIEW



0' 10' 20' 40' N

SCULPTURE PLAZA PERSPECTIVE



KEY ACCESS NODES INCLUDE CARVED GRANITE SCULPTURES THAT PORTRAY KEY EVENTS IN MARTIN LUTHER KING JR.'S LIFE. THESE EVENTS ARE IN ORDER AS ONE CIRCLES THE OUTER PATH FROM THE PLAZA COUNTERCLOCKWISE



1. King skipped both the ninth and twelfth grades, entering Morehouse College at age 15. He was soon ordained as a Baptist minister at 18. In 1948 he graduated with a B.A. in sociology.
2. At 35 he became the youngest person to receive the Nobel Peace Prize for his work to end racial segregation, and racial discrimination using non-violent methods in 1964.
3. King was among Principal leaders of the Civil rights Movement and advocate for direct action nonviolent protest. He refocused his efforts on ending poverty and opposing the Vietnam War from a religious perspective.
4. He Assassinated in Memphis, Tennessee on April 4, 1968.
5. King was awarded the Presidential Medal of Freedom in 1977; and Martin Luther King, Jr. Day was established as a U.S. national holiday in 1986.



PASSIVE RECREATION/ OUTDOOR CLASSROOM



PERSPECTIVE OF MULTIUSE PATH WITH NATIVE PRAIRIE AND ACTIVE OPEN SPACE ON EITHER SIDE

# KING PARK MASTER PLAN AND PLAZA

MARK SPEERS  
LA335  
10/26/09