



**DEPARTMENT OF COMMUNITY DEVELOPMENT SERVICES**

*Planning Division*

**m e m o r a n d u m**

**TO:** Mayor Laurel Lunt Prussing and the Urbana City Council

**FROM:** Elizabeth H. Tyler, FAICP, Director

**DATE:** November 13, 2014

**SUBJECT:** **Plan Case 2223-CP-14**, a request to adopt the Active Choices: Champaign County Greenways & Trails Plan as an amendment to the 2005 Urbana Comprehensive Plan

---

**Introduction and Background**

This is a continuation of a request to adopt the Active Choices: Champaign County Greenways and Trails Plan as an amendment to the Urbana Comprehensive Plan. The Active Choices plan contains maps, goals and a projects list for development of off-street trails and greenways throughout Champaign County. The future trails map in this plan will replace Appendix C: Greenways and Trails Classification Map in the 2005 Comprehensive Plan as the guiding document for future off-street trails in Urbana.

The new Active Choices Plan replaces the 2004 Greenways and Trails Plan, which was incorporated into the 2005 Comprehensive Plan as an Agency Plan. Agency Plans are plans developed and approved by agencies outside of the City that may have an impact on how the City develops. Because the Greenways and Trails Classification Map found in the 2005 Comprehensive Plan is taken directly from the Greenways and Trails Plan, the revised map contained in the plan is requested to be adopted as an amendment to the 2005 Comprehensive Plan.

The Active Choices Plan was compiled by the Champaign County Regional Planning Commission (RPC) over the course of two years. The process was guided by Greenways and Trails Plan Policy and Technical Committees, which consist of staff members from various municipalities, districts, and agencies throughout Champaign County, including staff from the City of Urbana. The RPC held four public workshops in various community locations in order to maximize opportunities for citizens to contribute to the plan.

City Council reviewed the Active Choices: Champaign County Greenways & Trails Plan on August 4, 2014. At that meeting the Council asked for additional review of the plan by the Urbana Bicycle

and Pedestrian Advisory Committee (BPAC). City Staff presented the Active Choices plan to the BPAC on September 16, 2014. At that meeting, members of BPAC discussed the role of the Active Choices Plan and agreed that the Urbana Bicycle Master Plan should be the controlling bicycle planning document for projects inside the City once it is adopted. BPAC recommended adopting the Active Choices plan as an amendment to the Urbana Comprehensive Plan with no substantial changes.

At their October 9, 2014 meeting, the Urbana Plan Commission discussed a request to adopt the Active Choices: Champaign County Greenways & Trails Plan as an amendment to the 2005 Urbana Comprehensive Plan. Plan Commissioners had concerns about adopting this plan as a part of the Urbana Comprehensive Plan because of inconsistencies with existing and upcoming City plans, including the Comprehensive Plan Mobility Map and the upcoming 2014 Urbana Bicycle Master Plan. Plan Commissioners asked staff to identify inconsistencies between these plans and the Active Choices Plan. Staff presented a list of those differences, and at the November 6, 2014 Plan Commission meeting, the Commission voted seven ayes to zero nays to forward the case to City Council with a recommendation that the City adopt the Active Choices Plan as an amendment to the Urbana Comprehensive Plan, with the stipulation that any inconsistencies identified in the Active Choices Plan as compared to City-prepared plans shall not be adopted and that the City's existing and future plans shall prevail.

## **Discussion**

Staff has reviewed the Active Choices Plan Future Condition Maps and identified a list of minor differences between it and the proposed network map for the 2014 Urbana Bicycle Master Plan (attached as Exhibit C). These differences are listed in Exhibit D. Staff also compared the Active Choices Plan against the 2005 Comprehensive Plan Mobility Map. One difference was found: the Active Choices Plan shows a sidepath along the future Olympian Drive extending east of Route 45 to High Cross Road. On the Comprehensive Plan Mobility Map, future Olympian Drive is shown terminating at Route 45, with an arrow indicating it could be extended to High Cross Road, but the configuration of that connection is not specified. Plan Commission and staff recommend that these inconsistencies should be recognized by a general statement in the adopting ordinance and not individually.

## **Options**

City Council has the following options for Plan Case 2223-CP-14:

- A. Adopt the Active Choices Plan as an amendment to the Comprehensive Plan, with the exception of specific changes as noted in the attached exhibit; or

- B. Adopt the Active Choices Plan as an amendment to the Comprehensive Plan, with the general stipulation that any inconsistencies between the Active Choices and other city plans shall not be adopted and the City's existing and future plans shall prevail; or
- C. Accept the Active Choices Plan as an Agency Plan, rather than adopt it as an amendment, noting the identified discrepancies between the plan and adopted City plans; or
- D. Deny the adoption or acceptance of the Active Choices Plan.

### **Recommendation**

Option B will allow City Council to adopt the plan and associated maps into the Comprehensive Plan, but allows for flexibility where the maps conflict with City plans. It is important to adopt the Active Choices Plan because its maps contain certain bike and pedestrian facilities that the Comprehensive Plan and Urbana Bicycle Master Plan do not. These facilities are listed in Exhibit D. Moreover, the general stipulation ensures that any unnoticed or future inconsistencies will not be adopted. The attached adopting ordinance has been modified to include this change.

The Urbana Plan Commission recommends that Council **APPROVE** adoption of the Active Choices Champaign County Greenways and Trails Plan presented in Plan Case No. 2223-CP-14 as an amendment to the 2005 Comprehensive Plan with the stipulation that any inconsistencies between the Active Choices Plan and City-prepared plans shall not be adopted and the City's existing and future plans shall prevail.

Attachments:

Exhibit A: Active Choices Plan Future Conditions Maps for City of Urbana

Exhibit B: Active Choices Plan Future Projects List for City of Urbana

Exhibit C: Draft 2014 Urbana Bicycle Master Plan Proposed Bicycle Facility Network Map

Exhibit D: Comparison of Active Choices Future Conditions Map to 2014 Urbana Bicycle Master Plan Network

For a complete draft of the plan, please visit <http://www.ccrpc.org/greenways/documents.php>.

**ORDINANCE NO. 2014-11-075**

**AN ORDINANCE AMENDING THE CITY OF 2005 URBANA COMPREHENSIVE PLAN**

(Active Choices: Champaign County Greenways and Trails Plan -  
Plan Case No. 2223-CP-14)

WHEREAS, the Urbana City Council on April 11, 2005 in Ordinance No. 2005-03-050 adopted the 2005 City of Urbana Comprehensive Plan; and

WHEREAS, the 2005 Comprehensive Plan contains goals, objectives, policies, future land use maps, and other recommendations pertaining to the entire City; and

WHEREAS, the 2005 Comprehensive Plan states that Agency Plans include goals, objectives and policies that are important to the City and assist in guiding land use decisions within the City; and

WHEREAS, Appendix "C", Greenways and Trails Classification Map of the 2005 Comprehensive Plan shows the existing and future off-street shared use paths and on-street bikeways as designated by the 2004 Champaign County Greenways and Trails Plan; and

WHEREAS, the Active Choices: Greenways and Trails Plan contains minor differences from the City's adopted and proposed plans for alignments and types of bicycle facilities; and

WHEREAS, after due publication and proper legal notification of a public hearing on October 9, 2014, which was continued to November 6, 2014, the Urbana Plan Commission voted 7 ayes to 0 nays to recommended that the Urbana City Council adopt the Active Choices: Champaign County Greenways and Trails Plan as an official amendment to 2005 Urbana Comprehensive Plan with the stipulation that any inconsistencies between the Active Choices and other city plans shall not be adopted and the City's existing and future plans shall prevail; and

WHEREAS, the City Council finds that it is in the public interest to adopt an amendment to the 2005 Urbana Comprehensive Plan to provide a detailed plan to achieve these public policies.

NOW, THEREFORE, BE IT ORDAINED BY THE CORPORATE AUTHORITIES OF THE CITY OF URBANA, ILLINOIS, as follows:

Section 1. The "Active Choices: Champaign County Greenways and Trails Plan" is hereby adopted as an Agency Plan within the 2005 Comprehensive Plan of the City of Urbana, as amended, and

replaces the 2004 Champaign County Greenways and Trails Plan, with the exception that any inconsistencies between the Active Choices Plan and other city plans shall not be adopted and the City's existing and future plans shall prevail.

Section 2. The attached maps labeled Exhibit A are hereby adopted as Appendix "C" of the 2005 Comprehensive Plan of the City of Urbana, as amended, and replace the existing Appendix "C", taken from the 2004 Champaign County Greenways and Trails Plan, with the exception that any inconsistencies between the Active Choices Plan and other city plans shall not be adopted and the City's existing and future plans shall prevail.

Section 3. The City Clerk is directed to publish this Ordinance in pamphlet form by authority of the corporate authorities and thereafter file a certified copy in the Champaign County Recorder's Office in conformance with Chapter 65, Section 11-12-7 of the Illinois Compiled Statutes (65 ILCS 5/11-12-7).

Section 4. This Ordinance shall be in full force and effect upon the expiration of 10 days after the date of filing notice of the adoption of the comprehensive plan amendment with the Champaign County Recorder, in conformance with Chapter 65, Section 11-12-7 of the Illinois Compiled Statutes (65 ILCS 5/11-12-7).

PASSED by the Corporate Authorities this \_\_\_\_\_ day of  
\_\_\_\_\_, 2014.

AYES:

NAYS:

ABSTAINS:

\_\_\_\_\_  
Phyllis D. Clark, City Clerk

APPROVED by the Mayor this \_\_\_\_\_ day of \_\_\_\_\_, 2014.

\_\_\_\_\_  
Laurel Lunt Prussing, Mayor

**CERTIFICATE OF PUBLICATION IN PAMPHLET FORM**

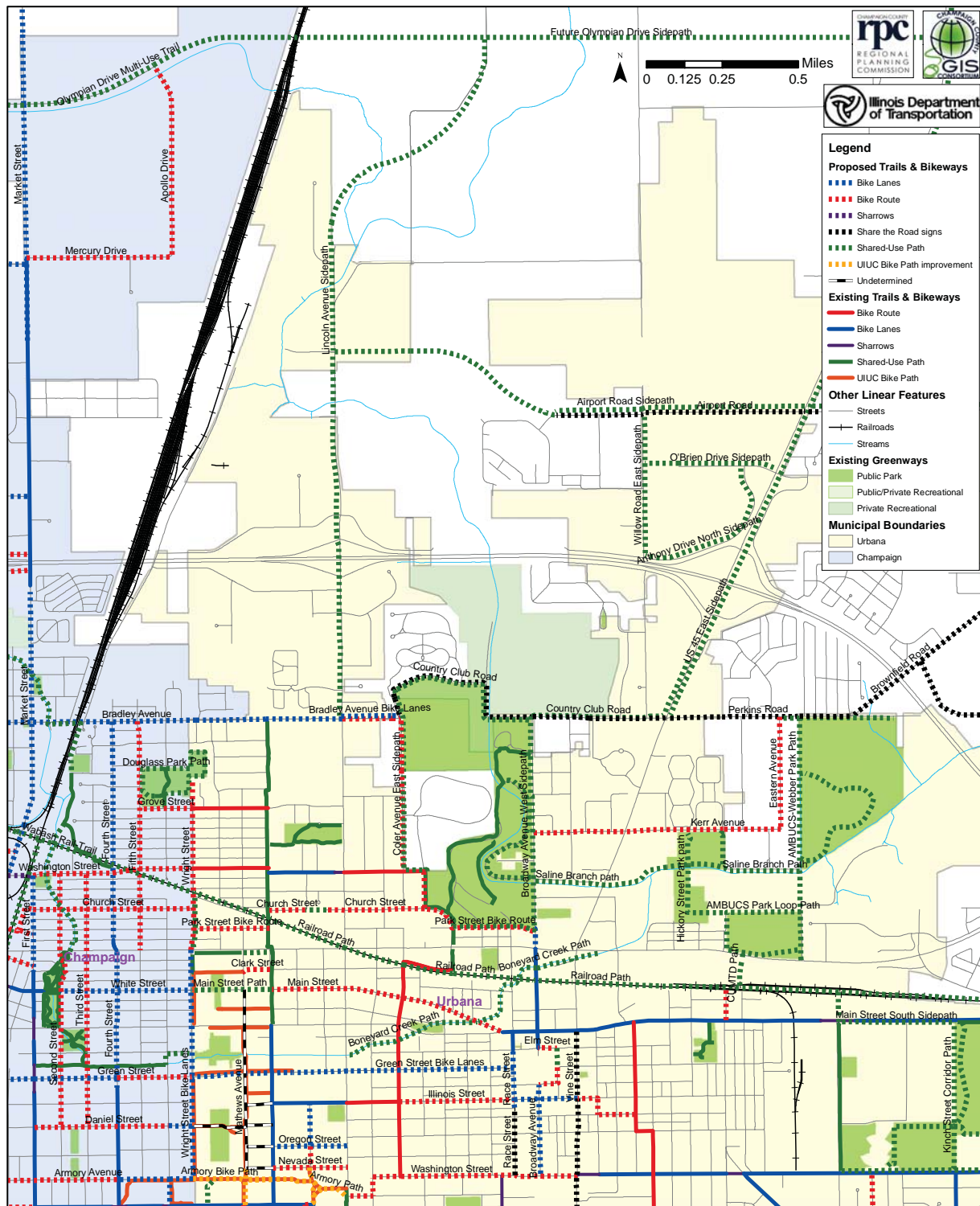
I, Phyllis D. Clark, certify that I am the duly elected and acting Municipal Clerk of the City of Urbana, Champaign County, Illinois. I certify that on the \_\_\_\_\_ day of \_\_\_\_\_, 2014, the corporate authorities of the City of Urbana passed and approved Ordinance No. \_\_\_\_\_, entitled: "**AN ORDINANCE AMENDING THE CITY OF URBANA 2005 COMPREHENSIVE PLAN** (Active Choices: Champaign County Greenways and Trails Plan - Plan Case No. 2223-CP-14)", which provided by its terms that it should be published in pamphlet form. The pamphlet form of Ordinance No. \_\_\_\_\_ was prepared, and a copy of such Ordinance was posted in the Urbana City Building commencing on the \_\_\_\_\_ day of \_\_\_\_\_, 2014, and continuing for at least ten (10) days thereafter. Copies of such Ordinance were also available for public inspection upon request at the Office of the City Clerk.

DATED at Urbana, Illinois, this \_\_\_\_\_ day of \_\_\_\_\_, 2014.



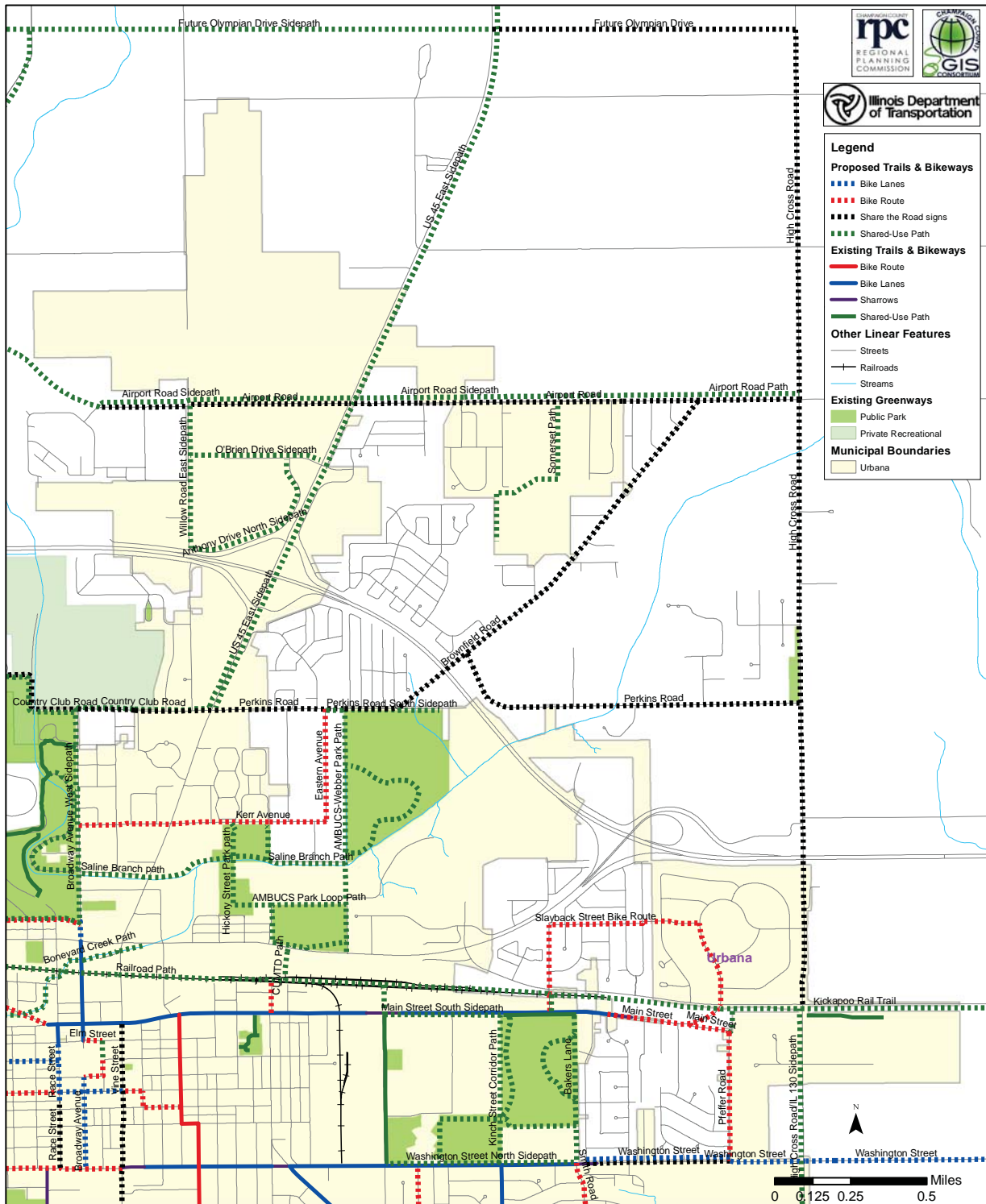
### Map 28: Future Trail & Bikeway Conditions: NW Urbana

**Active Choices:** Champaign County Greenways & Trails Plan Update  
Future Trail & Bikeway Conditions  
Northwest Urbana



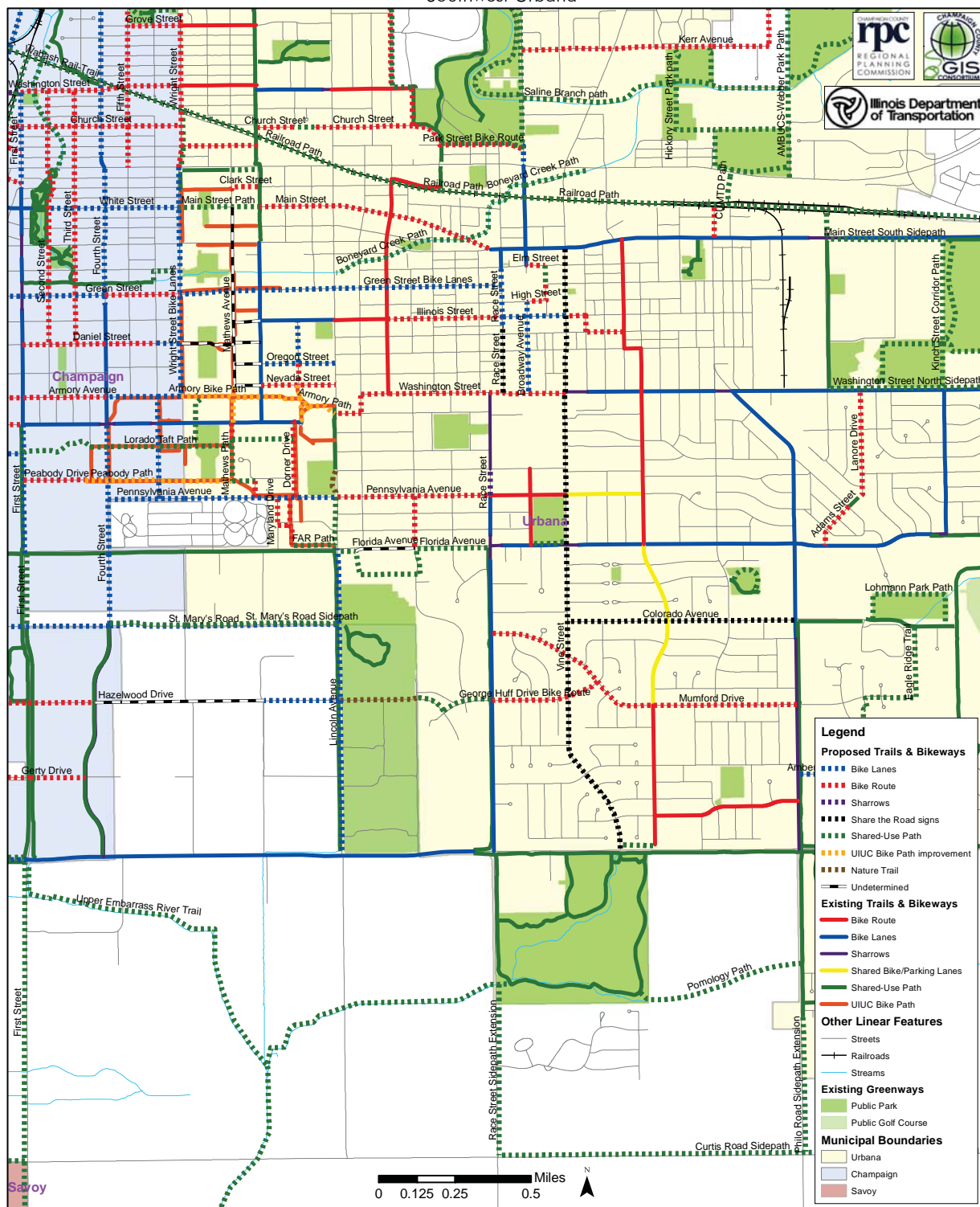
## Map 29: Future Trail & Bikeway Conditions: NE Urbana

**Active Choices:** Champaign County Greenways & Trails Plan Update  
Future Trail & Bikeway Conditions  
Northeast Urbana



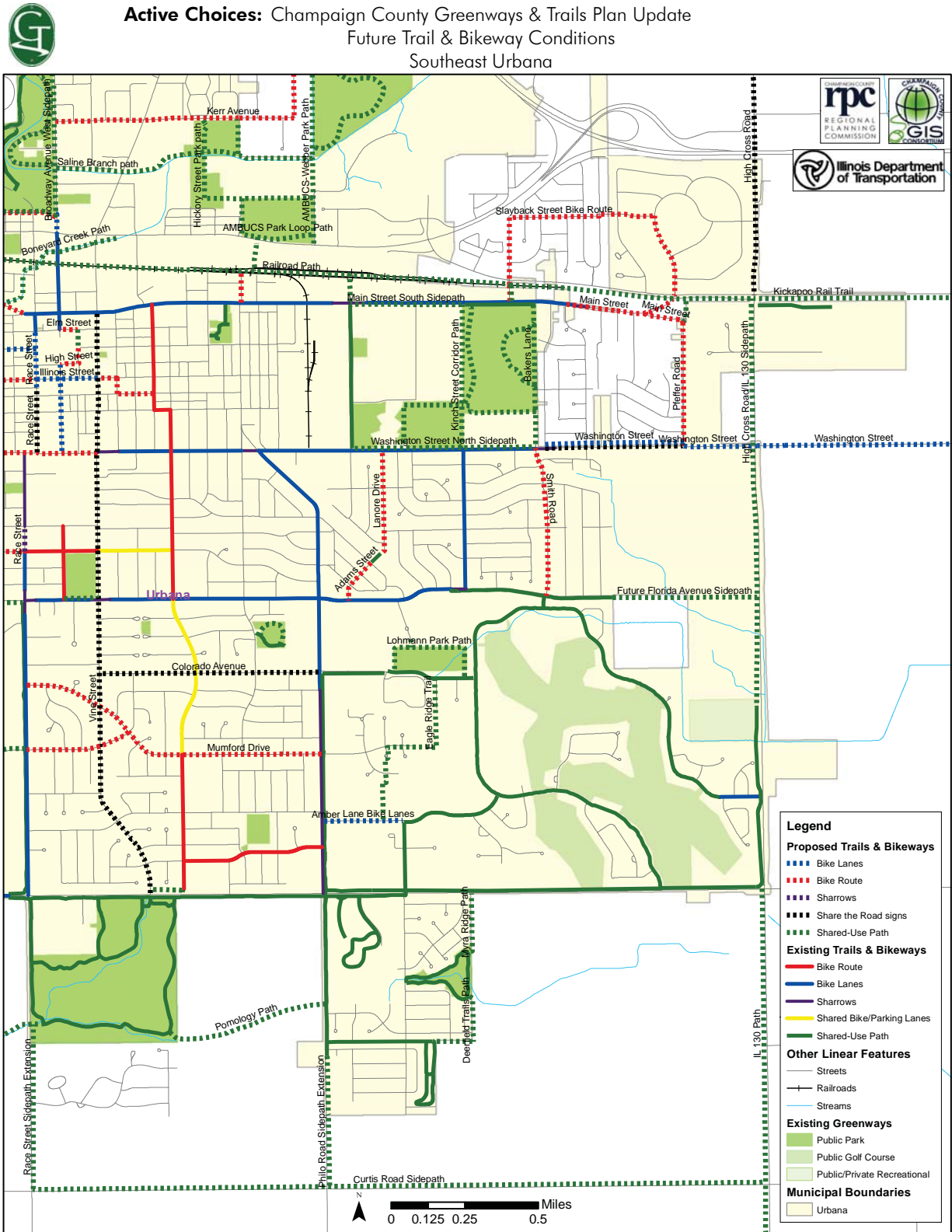
### Map 30: Future Trail & Bikeway Conditions: SW Urbana

**Active Choices:** Champaign County Greenways & Trails Plan Update  
Future Trail & Bikeway Conditions  
Southwest Urbana



## Map 31: Future Trail & Bikeway Conditions: SE Urbana

**Active Choices:** Champaign County Greenways & Trails Plan Update  
 Future Trail & Bikeway Conditions  
 Southeast Urbana



## Active Choices

## Champaign County Greenways &amp; Trails Plan

## Future Conditions

## Urbana (including unincorporated areas)

Project ID	Name	Type	Plan	Terminus (NE)	Terminus (SW)	Distance	Jurisdiction	Municipality	Description	Priority	Time-frame
UR-HP-01	Amber Lane Bike Lanes	Bike Lanes	UBMP	Myra Ridge Dr	Philo Rd	0.27	Urbana	Urbana		High	High
UR-HP-02	Broadway Avenue	Bike Lanes	UBMP, University Ave	Park St	University Ave	0.07	Urbana	Urbana		High	High
UR-HP-03	Broadway Avenue	Bike Lanes	UBMP	High St	Illinois St	0.05	Urbana	Urbana		High	High
UR-HP-04	Broadway Avenue	Bike Lanes	UBMP	Illinois St	Washington St	0.25	Urbana	Urbana		High	High
UR-HP-05	Green Street Bike Lanes	Bike Lanes	UBMP, CBP	Lincoln Ave	Wright St	0.51	Urbana	Urbana		High	High
UR-HP-06	Illinois Street	Bike Lanes	UBMP	Vine St	Race St	0.21	Urbana	Urbana		High	High
UR-HP-07	Oregon Street	Bike Lanes	UBMP, CBP	Lincoln Ave	Goodwin Ave	0.25	Urbana	Urbana		High	High
UR-HP-08	Race Street	Bike Lanes	UBMP	Elm St	S of Illinois St	0.19	Urbana	Urbana		High	High
UR-HP-09	Clark Street	Bike Route	UBMP, GT, University Ave	Goodwin Ave	Mathews Ave	0.09	UIUC	Urbana		High	High
UR-HP-10	Elm Street	Bike Route	UBMP	Walnut St	Broadway Ave	0.06	Urbana	Urbana		High	High
UR-HP-11	Gregory Street	Bike Route	UBMP	Oregon St	Nevada St	0.07	UIUC	Urbana		High	High
UR-HP-12	High Street	Bike Route	UBMP	Walnut St	Broadway Ave	0.06	Urbana	Urbana		High	High
UR-HP-13	Illinois Street	Bike Route	UBMP	Race St	Coler Ave	0.55	Urbana	Urbana		High	High
UR-HP-14	Illinois Street HEUNA Bike Route	Bike Route	UBMP	Urbana Ave	Vine St	0.07	Urbana	Urbana	Thru Historic East Urbana	High	High
UR-HP-15	Lanore Drive	Bike Route	UBMP	Washington St	S terminus	0.36	Urbana	Urbana		High	High
UR-HP-16	Main Street	Bike Route	UBMP, CBP	Coler Ave	Goodwin Ave	0.43	Urbana	Urbana		High	High
UR-HP-17	Main Street	Bike Route	UBMP	Springfield Ave	Coler Ave	0.35	Urbana	Urbana		High	High
UR-HP-18	Mumford Drive	Bike Route	UBMP	Philo Rd	Race St	1.09	Urbana	Urbana		High	High
UR-HP-19	Park Street Bike Route	Bike Route	UBMP, University Ave	Broadway Ave	Mc-Cullough St	0.28	Urbana	Urbana		High	High

# Future Conditions

# Active Choices

Champaign County Greenways & Trails Plan

Project ID	Name	Type	Plan	Terminus (NE)	Terminus (SW)	Distance	Jurisdiction	Municipality	Description	Priority	Time-frame
UR-HP-20	Pennsylvania Avenue	Bike Route	SRTS	Race St	Lincoln Ave	0.50	Urbana	Urbana		High	High
UR-HP-21	Walnut Street	Bike Route	UBMP	Green St	High St	0.05	Urbana	Urbana		High	High
UR-HP-22	Washington Street	Bike Route	UBMP	Vine St	Busey Ave	0.68	Urbana	Urbana		High	High
UR-HP-23	Vine Street	Share the Road	UBMP	Main St	Windsor Rd	2.04	Urbana	Urbana		High	High
UR-HP-24	Anderson Street Shared-Use Path to Windsor Road	SUP (OS)	UBMP	Anderson St	Windsor Rd	0.01	Urbana	Urbana		High	High
UR-HP-25	Boneyard Creek Path	SUP (OS)	UBMP, University Ave	University Ave	Broadway Ave	0.22	Urbana	Urbana		High	High
UR-HP-26	Boneyard Creek Path	SUP (OS)	UBMP, University Ave	Griggs St	Main St	0.14	Urbana	Urbana		High	High
UR-HP-27	Boneyard Creek Path	SUP (OS)	UBMP, University Ave	Broadway Ave	Griggs St	0.16	Urbana	Urbana		High	High
UR-HP-28	Crestview Park Loop Path	SUP (OS)	UBMP	Crestview Park Path	Crestview Park Path	0.16	UPD	Urbana		High	High
UR-HP-29	Lincoln Square East Shared-Use Path	SUP (OS)	UBMP	Elm St	Green St	0.06	Lincoln Square	Urbana		High	High
UR-HP-30	Broadway Avenue West Side-path	SUP (SP)	UBMP, GT, University Ave	Country Club Rd	Park St	0.70	UPD	Urbana		High	High
UR-HP-31	Florida Avenue North Sidepath	SUP (SP)	UBMP	Vine St	Broadway Ave	0.11	UPD	Urbana		High	High
UR-HP-32	Future Florida Avenue Sidepath	SUP (SP)	UBMP, GT, IL 130	E of Abercorn St	High Cross Rd (IL 130)	0.49	Urbana	Urbana		High	High
UR-HP-33	Lincoln Avenue	SUP (SP)	CBP, UBMP	Pennsylvania Ave	Florida Ave	0.16	Urbana	Urbana		High	High
UR-HP-34	Park Street North Sidepath	SUP (SP)	UBMP, University Ave	Broadway Ave	McCullough St	0.27	UPD	Urbana		High	High

# Active Choices

## Champaign County Greenways & Trails Plan

# Future Conditions

Project ID	Name	Type	Plan	Terminus (NE)	Terminus (SW)	Distance	Jurisdiction	Municipality	Description	Priority	Time-frame
UR-HP-35	AMBUCS Park Loop Path	SUP (OS)	UBMP, GT	AMBUCS-Webber Park Path	AMBUCS-Webber Park Path	0.61	UPD	Urbana		High	Med
UR-HP-36	AMBUCS-Webber Park Path	SUP (OS)	UBMP, GT	Perkins Rd	Saline Branch	0.50	UPD	Urbana		High	Med
UR-HP-37	AMBUCS-Webber Park Path	SUP (OS)	UBMP, GT	Saline Branch	AMBUCS Park	0.08	Urbana	Urbana		High	Med
UR-HP-38	AMBUCS-Webber Park Path	SUP (OS)	UBMP, GT	AMBUCS Park	University Ave	0.22	UPD	Urbana		High	Med
UR-HP-39	Chief Shemauger Park east path	SUP (OS)	UBMP, GT	Kerr Ave	Saline Branch Path	0.12	UPD	Urbana		High	Med
UR-HP-40	Chief Shemauger Park west path	SUP (OS)	UBMP, GT	Kerr Ave	Saline Branch Path	0.12	UPD	Urbana		High	Med
UR-HP-41	Kinch Street Corridor Path	SUP (OS)	UBMP, GT	Main St	Washington St	0.15	UPD	Urbana		High	Med
UR-HP-42	Lohmann Park Path	SUP (OS)	UBMP, GT	Colorado Ave	Colorado Ave	0.42	UPD	Urbana		High	Med
UR-HP-43	Lohmann Park-Thomas Paine path	SUP (OS)	UBMP	Thomas Paine School	Lohmann Park Path	0.03	USD	Urbana		High	Med
UR-HP-44	Prairie Park Loop Path	SUP (OS)	UBMP, GT	Kinch St	Washington St	0.34	UPD	Urbana		High	Med
UR-HP-45	Saline Branch path	SUP (OS)	UBMP, GT	Chief Shemauger Park	Broadway Ave	0.46	Urbana	Urbana		High	Med
UR-HP-46	Saline Branch Path	SUP (OS)	UBMP, GT	Perkins Road Park Site	Chief Shemauger Park	0.25	Urbana	Urbana		High	Med
UR-HP-47	Saline Branch path	SUP (OS)	UBMP, GT	Chief Shemauger Park	Chief Shemauger Park	0.19	UPD	Urbana		High	Med
UR-HP-48	Weaver Park East Path	SUP (OS)	UBMP, GT	Bakers Ln	Bakers Ln	0.34	UPD	Urbana		High	Med
UR-HP-49	Weaver Park South Path	SUP (OS)	UBMP, GT	Bakers Ln	Kinch St	0.27	UPD	Urbana		High	Med

# Future Conditions

# Active Choices

Champaign County Greenways & Trails Plan

Project ID	Name	Type	Plan	Terminus (NE)	Terminus (SW)	Distance	Jurisdiction	Municipality	Description	Priority	Time-frame
UR-HP-50	Weaver Park West Path	SUP (OS)	UBMP, GT	Main St	Prairie Park	0.36	UPD	Urbana		High	Med
UR-HP-51	Main Street South Sidepath	SUP (SP)	UBMP, GT	Weaver Park	Lierman Ave	0.38	Urbana	Urbana		High	Med
UR-HP-52	Saline Branch path	SUP (SP)	UBMP	Crystal Lake Pool Path	Broadway Ave	0.58	UPD	Urbana		High	Med
UR-HP-53	Green Street Bike Lanes	Bike Lanes	UBMP	Race St	Lincoln Ave	0.55	Urbana	Urbana		High	Low
UR-HP-54	Boneyard Creek Path	SUP (OS)	UBMP	Main St	Lincoln Ave	0.45	Urbana	Urbana		High	Low
UR-HP-55	Race Street Sidepath Extension	SUP (SP)	UBMP	Meadowbrook Park Prairie Path	Meadowbrook Park S limit	0.06	UPD	Urbana		High	Low
UR-HP-56	Pomology Path	SUP (OS)	UBMP, GT	Philo Rd	Meadowbrook Park	0.56	County	Urbana (unincorporated)		High	Low
UR-HP-57	Race Street Sidepath Extension	SUP (SP)	UBMP	Meadowbrook Park	Curtis Rd	0.50	County	Urbana (unincorporated)		High	Low
UR-HP-58	Perkins Road Park Site Trail	SUP (OS)	GT	AMBUCS-Webber Park Path	AMBUCS-Webber Park Path	0.64	UPD	Urbana		High	
UR-HP-59	Gregory Path	UIUC Bike Path	CBP	Nevada St	Armory Path	0.05	UIUC	Urbana		High	
UR-HP-60	Gregory Path	UIUC Bike Path	CBP	Armory Path	Gregory Dr	0.07	UIUC	Urbana		High	
UR-HP-61	Gregory Path Spur	UIUC Bike Path	CBP	Armory Path	Gregory Path	0.03	UIUC	Urbana		High	
UR-MP-01	Bradley Avenue	Bike Lanes	UBMP	Lincoln Ave	Goodwin Ave	0.25	Urbana	Urbana		Med	High
UR-MP-02	Bradley Avenue	Bike Lanes	UBMP, CTMP	Goodwin Ave	Carver Dr	0.23	Urbana	Urbana		Med	High
UR-MP-03	Gregory Street	Bike Lanes	UBMP, CBP	Illinois St	Oregon St	0.14	Urbana	Urbana		Med	High
UR-MP-04	Washington Street	Bike Lanes	UBMP, IL 130	High Cross Rd (IL 130)	Pfeffer Rd	0.25	Urbana	Urbana		Med	High
UR-MP-05	Adams Street	Bike Route	UBMP	Fairlawn Dr	Florida Ave	0.16	Urbana	Urbana		Med	High



## Active Choices

## Champaign County Greenways &amp; Trails Plan

## Future Conditions

Project ID	Name	Type	Plan	Terminus (NE)	Terminus (SW)	Distance	Jurisdiction	Municipality	Description	Priority	Time-frame
UR-MP-06	Beringer Circle Bike Route	Bike Route	UBMP	Slayback Rd	University Ave	0.28	Urbana	Urbana		Med	High
UR-MP-07	Bradley Avenue	Bike Route	UBMP	Coler Ave	Lincoln Ave	0.16	Urbana	Urbana		Med	High
UR-MP-08	Busey Avenue Bike Route	Bike Route	UBMP	Washington St	Iowa St	0.06	Urbana	Urbana		Med	High
UR-MP-09	California Avenue HEUNA Bike Route	Bike Route	UBMP	Grove St	Urbana Ave	0.12	Urbana	Urbana	Thru Historic East Urbana	Med	High
UR-MP-10	Church Street Bike Route	Bike Route	UBMP, University Ave	McCullough St	Orchard St	0.12	Urbana	Urbana		Med	High
UR-MP-11	Coler Avenue Bike Route	Bike Route	UBMP	N of Sunset Dr	Fairview Ave	0.28	Urbana	Urbana		Med	High
UR-MP-12	Coler Avenue Bike Route	Bike Route	UBMP	Bradley Ave	S of Bradley Ave	0.17	Urbana	Urbana		Med	High
UR-MP-13	George Huff Drive Bike Route	Bike Route	UBMP	Mumford Dr	Race St	0.36	Urbana	Urbana		Med	High
UR-MP-14	Iowa Street Bike Route	Bike Route	UBMP	Busey Ave	Lincoln Ave	0.08	Urbana	Urbana		Med	High
UR-MP-15	Kerr Avenue	Bike Route	UBMP, GT	Urbana limits	Broadway Ave	0.63	Urbana	Urbana		Med	High
UR-MP-16	Kerr Avenue	Bike Route	UBMP	Eastern Ave	Urbana limits	0.19	County	Urbana		Med	High
UR-MP-17	Main Street	Bike Route	UBMP	Urbana limits	Scottswood Dr	0.18	Urbana	Urbana		Med	High
UR-MP-18	Main Street	Bike Route	UBMP	Pfeffer Rd	Urbana limits	0.03	Urbana	Urbana		Med	High
UR-MP-19	Nevada Street	Bike Route	UBMP, CBP	Lincoln Ave	Goodwin Ave	0.25	Urbana	Urbana		Med	High
UR-MP-20	Orchard Street Bike Route	Bike Route	UBMP	Fairview Ave	Church St	0.12	Urbana	Urbana		Med	High
UR-MP-21	Orchard Street Bike Route	Bike Route	UBMP	Pennsylvania Ave	Florida Ave	0.17	Urbana	Urbana		Med	High
UR-MP-22	Park Street Bike Route	Bike Route	UBMP, University Ave	Goodwin Ave	Wright St	0.25	Urbana	Urbana		Med	High
UR-MP-23	Pfeffer Road	Bike Route	UBMP	Main St	Washington St	0.42	Urbana	Urbana		Med	High

# Future Conditions

## Active Choices

### Champaign County Greenways & Trails Plan

Project ID	Name	Type	Plan	Terminus (NE)	Terminus (SW)	Distance	Jurisdiction	Municipality	Description	Priority	Time-frame
UR-MP-24	Slayback Road Bike Route	Bike Route	UBMP	Beringer Cir	Urbana limits	0.16	Urbana	Urbana		Med	High
UR-MP-25	Smith Road	Bike Route	UBMP	Washington St	Florida Ave	0.51	Urbana	Urbana		Med	High
UR-MP-26	Smith Road	Bike Route	UBMP	University Ave	Main St	0.06	Urbana	Urbana		Med	High
UR-MP-27	Urbana Avenue HEUNA Bike Route	Bike Route	UBMP	Illinois St	California Ave	0.05	Urbana	Urbana	Thru Historic East Urbana	Med	High
UR-MP-28	Airport Road	Share the Road	UBMP	E of Somerset Dr	W of Landis Farm Rd	0.67	Urbana	Urbana		Med	High
UR-MP-29	Airport Road	Share the Road	UBMP	Cunningham Ave (US 45)	Willow Rd	0.53	Urbana	Urbana		Med	High
UR-MP-30	Coler Avenue	Share the Road	UBMP	N of Bradley Ave	Bradley Ave	0.06	Urbana	Urbana		Med	High
UR-MP-31	Colorado Avenue	Share the Road	UBMP	Philo Rd	Vine St	0.75	Urbana	Urbana		Med	High
UR-MP-32	Country Club Road	Share the Road	UBMP	Cunningham Ave (US 45)	Urbana limits	0.25	Urbana	Urbana		Med	High
UR-MP-33	High Cross Road	Share the Road	UBMP	I-74	I-74	0.05	IDOT	Urbana		Med	High
UR-MP-34	High Cross Road	Share the Road	UBMP	I-74	University Ave (US 150)	0.46	Urbana	Urbana		Med	High
UR-MP-35	Perkins Road	Share the Road	UBMP	Cunningham Ave (US 45)	Urbana limits	0.18	Urbana	Urbana		Med	High
UR-MP-36	Perkins Road	Share the Road	UBMP	Perkins Road Park Site	Brownfield Rd	0.17	Urbana	Urbana		Med	High
UR-MP-37	Race Street	Share the Road	UBMP	S of Illinois St	Washington St	0.22	Urbana	Urbana		Med	High
UR-MP-38	Washington Street	Share the Road	UBMP	Pfeffer Rd	Smith Rd	0.47	Urbana	Urbana		Med	High
UR-MP-39	Race Street	Sharrows	UBMP	Michigan Ave	Pennsylvania Ave	0.09	Urbana	Urbana		Med	High
UR-MP-40	Railroad Path	SUP (OS)	UBMP, GT	Broadway Ave	McCullough St	0.27	Penn Central RR	Urbana		Med	High

## Active Choices

## Champaign County Greenways &amp; Trails Plan

## Future Conditions

Project ID	Name	Type	Plan	Terminus (NE)	Terminus (SW)	Distance	Jurisdiction	Municipality	Description	Priority	Time-frame
UR-MP-41	High Cross Road/ IL 130 Sidepath	SUP (SP)	UBMP, IL 130	Washington St	Village Inn Pizza	0.90	IDOT	Urbana		Med	High
UR-MP-42	High Cross Road/ IL 130 Sidepath	SUP (SP)	UBMP, IL 130	US 150	Urbana limits S of Tatman Ct	0.25	IDOT	Urbana		Med	High
UR-MP-43	US 45 East Sidepath	SUP (SP)	UBMP, GT	O'Brien Dr	Perkins Rd	0.87	IDOT	Urbana		Med	High
UR-MP-44	US 45 East Sidepath	SUP (SP)	UBMP, GT	Urbana limits	O'Brien Dr	0.64	IDOT	Urbana		Med	High
UR-MP-45	Windsor Road North Sidepath	SUP (SP)	UBMP	Anderson St	Vine St	0.10	Urbana	Urbana		Med	High
UR-MP-46	Wright Street East Sidepath	SUP (SP)	UBMP, University Ave	Park St	University Ave	0.06	Urbana	Urbana		Med	High
UR-MP-47	Washington Street	Bike Lanes	UBMP, IL 130	E of High Cross Rd (IL 130)	High Cross Rd (IL 130)	0.10	County	Urbana (unincorporated)		Med	High
UR-MP-48	Bradley Avenue	Bike Route	UBMP	Coler Ave	Lincoln Ave	0.03	County	Urbana (unincorporated)		Med	High
UR-MP-49	Coler Avenue Bike Route	Bike Route	UBMP	S of Bradley Ave	N of Sunset Dr	0.05	County	Urbana (unincorporated)		Med	High
UR-MP-50	Eastern Avenue	Bike Route	UBMP	Perkins Rd	Kerr Ave	0.37	County	Urbana (unincorporated)		Med	High
UR-MP-51	Main Street	Bike Route	UBMP	University Ave	Urbana limits	0.22	County	Urbana (unincorporated)		Med	High
UR-MP-52	Main Street	Bike Route	UBMP	Urbana limits	Main St	0.11	County	Urbana (unincorporated)		Med	High
UR-MP-53	Slayback Street Bike Route	Bike Route	UBMP	Urbana limits	Smith Rd	0.34	County	Urbana (unincorporated)		Med	High
UR-MP-54	Smith Road Bike Route	Bike Route	UBMP	Slayback St	University Ave	0.23	County	Urbana (unincorporated)		Med	High
UR-MP-55	Airport Road	Share the Road	UBMP	Captiva St	Cunningham Ave (US 45)	0.22	County	Urbana (unincorporated)		Med	High
UR-MP-56	Airport Road	Share the Road	UBMP	High Cross Rd	E of Somerset Dr	0.58	County	Urbana (unincorporated)		Med	High
UR-MP-57	Airport Road	Share the Road	UBMP	Willow Rd	Apple Tree St	0.28	County	Urbana (unincorporated)		Med	High

# Future Conditions

# Active Choices

Champaign County Greenways & Trails Plan

Project ID	Name	Type	Plan	Terminus (NE)	Terminus (SW)	Distance	Jurisdiction	Municipality	Description	Priority	Time-frame
UR-MP-58	Brownfield Road	Share the Road	UBMP	Airport Rd	Perkins Rd	1.43	County	Urbana (unincorporated)		Med	High
UR-MP-59	Coler Avenue	Share the Road	UBMP	Country Club Rd	N of Bradley Ave	0.01	County	Urbana (unincorporated)		Med	High
UR-MP-60	Country Club Road	Share the Road	UBMP	Broadway Ave	Coler Ave	0.60	County	Urbana (unincorporated)		Med	High
UR-MP-61	Country Club Road	Share the Road	UBMP	Urbana limits	Broadway Ave	0.19	County	Urbana (unincorporated)		Med	High
UR-MP-62	High Cross Road	Share the Road	UBMP	Airport Rd	I-74	1.49	County	Urbana (unincorporated)		Med	High
UR-MP-63	Perkins Road	Share the Road	UBMP	Perkins Road Park Site	Urbana limits E of Spring Cir	0.25	County	Urbana (unincorporated)		Med	High
UR-MP-64	Perkins Road	Share the Road	UBMP	High Cross Rd	Brownfield Rd	1.20	County	Urbana (unincorporated)		Med	High
UR-MP-65	High Cross Road/ IL 130 Sidepath	SUP (SP)	UBMP, IL 130	Urbana limits S of Tatman Ct	Washington St	0.24	IDOT	Urbana (unincorporated)		Med	High
UR-MP-66	Kickapoo Rail Trail	SUP (SP)	UBMP, GT, IL 130	IL 130 (High Cross Rd)	Smith Rd	0.83	County	Urbana (unincorporated)		Med	High
UR-MP-67	Bradley Avenue Bike Lanes	Bike Lanes	UBMP	Coler Ave	Lincoln Ave	0.17	Urbana	Urbana		Med	Med
UR-MP-68	Lincoln Avenue	Bike Lanes	CBP	Hazelwood Dr	Windsor Rd	0.50	UIUC	Urbana		Med	Med
UR-MP-69	Lincoln Avenue	Bike Lanes	CBP	St. Mary's Rd	Hazelwood Dr	0.25	UIUC	Urbana		Med	Med
UR-MP-70	Lincoln Avenue	Bike Lanes	CBP	Florida Ave	St. Mary's Rd	0.25	UIUC	Urbana		Med	Med
UR-MP-71	Lincoln Avenue	Nature Trail	CBP	Michigan Ave	Pennsylvania Ave	0.09	UIUC	Urbana		Med	Med
UR-MP-72	Bakers Lane	SUP (OS)	UBMP	Main St	Washington St	0.49	Urbana	Urbana		Med	Med
UR-MP-73	Florida Ave path around UI President's House	SUP (OS)	UBMP, GT	Orchard St	Lincoln Ave	0.41	UIUC	Urbana		Med	Med
UR-MP-74	Hickory Street Park path	SUP (OS)	UBMP	Saline Branch Path	AMBUCS Park Loop Path	0.29	UPD	Urbana		Med	Med

# Active Choices

## Champaign County Greenways & Trails Plan

# Future Conditions

Project ID	Name	Type	Plan	Terminus (NE)	Terminus (SW)	Distance	Jurisdiction	Municipality	Description	Priority	Time-frame
UR-MP-75	Lorado Taft Path	SUP (OS)	CBP	Mathews Path	Urbana limits	0.18	UIUC	Urbana		Med	Med
UR-MP-76	Lorado Taft Path	SUP (OS)	CBP	Dorner Dr	Mathews Ave	0.20	UIUC	Urbana		Med	Med
UR-MP-77	Main Street Path	SUP (OS)	CBP, University Ave	Goodwin Ave	Wright St	0.26	UIUC	Urbana		Med	Med
UR-MP-78	Peabody Drive Path	SUP (OS)	CBP	Goodwin Ave	Mathews Path	0.08	UIUC	Urbana		Med	Med
UR-MP-79	Coler Avenue East Sidepath	SUP (SP)	UBMP	N of Sunset Dr	Fairview Ave	0.27	Urbana	Urbana		Med	Med
UR-MP-80	Coler Avenue East Sidepath	SUP (SP)	UBMP	N of Bradley Ave	S of Bradley Ave	0.24	UPD	Urbana		Med	Med
UR-MP-81	Country Club Road South Sidepath	SUP (SP)	UBMP	Broadway Ave	Coler Ave	0.56	UPD	Urbana		Med	Med
UR-MP-82	Fairview Avenue North Sidepath	SUP (SP)	UBMP	Orchard St	Coler Ave	0.08	Urbana	Urbana		Med	Med
UR-MP-83	Florida Avenue	SUP (SP)	UBMP, GT	Race St	Orchard St	0.23	UIUC	Urbana		Med	Med
UR-MP-84	George Huff Drive Sidepath	SUP (SP)	UBMP, CBP	Race St	Hazelwood Dr	0.16	UIUC	Urbana		Med	Med
UR-MP-85	Hazelwood Drive Shared-Use Path	SUP (SP)	UBMP, CBP	George Huff Dr	Hazelwood Ct	0.10	UIUC	Urbana		Med	Med
UR-MP-86	Lincoln Avenue Sidepath	SUP (SP)	UBMP	Killarney St	Bradley Ave	0.34	Urbana	Urbana		Med	Med
UR-MP-87	Perkins Road South Sidepath	SUP (SP)	UBMP	Webber Park	Webber Park	0.31	UPD	Urbana		Med	Med
UR-MP-88	Washington Street North Sidepath	SUP (SP)	UBMP	Smith Rd	Lierman Ave	0.62	Urbana	Urbana		Med	Med
UR-MP-89	Peabody Path	UIUC Bike Path	CBP	Mathews Path	Urbana limit	0.16	UIUC	Urbana		Med	Med
UR-MP-90	Bradley Avenue Bike Lanes	Bike Lanes	UBMP	Coler Ave	Lincoln Ave	0.02	County	Urbana (unincorporated)		Med	Med

# Future Conditions

## Active Choices

### Champaign County Greenways & Trails Plan

Project ID	Name	Type	Plan	Terminus (NE)	Terminus (SW)	Distance	Jurisdiction	Municipality	Description	Priority	Time-frame
UR-MP-91	Hazelwood Drive Path	Nature Trail	UBMP, CBP, GT	Hazelwood Ct	Lincoln Ave	0.25	UIUC	Urbana (unincorporated)		Med	Med
UR-MP-92	Coler Avenue East Sidepath	SUP (SP)	UBMP	Country Club Rd	N of Bradley Ave	0.03	UPD	Urbana (unincorporated)		Med	Med
UR-MP-93	Coler Avenue East Sidepath	SUP (SP)	UBMP	S of Bradley Ave	N of Sunset Dr	0.06	County	Urbana (unincorporated)		Med	Med
UR-MP-94	Pennsylvania Avenue	Bike Lanes	CBP	Lincoln Ave	Urbana limits	0.50	UIUC	Urbana		Med	Low
UR-MP-95	Washington Street	Bike Lanes	UBMP, IL 130	Pfeffer Rd	Smith Rd	0.47	Urbana	Urbana		Med	Low
UR-MP-96	Cottage Grove Avenue Bike Route	Bike Route	UBMP	Penn Central RR	Main St	0.11	Urbana	Urbana		Med	Low
UR-MP-97	Dorner Drive	Bike Route	CBP	Gregory Dr	Pennsylvania Ave	0.25	UIUC	Urbana		Med	Low
UR-MP-98	Mathews Avenue	Bike Route	CBP	Gregory Dr	Lorado Taft Path	0.06	UIUC	Urbana		Med	Low
UR-MP-99	CUMTD Path	SUP (OS)	UBMP	University Ave	Penn Central RR	0.12	CUMTD	Urbana		Med	Low
UR-MP-100	Deerfield Trails Path	SUP (OS)	UBMP, GT	South Ridge Park	Marc Trail	0.17	Urbana	Urbana		Med	Low
UR-MP-101	Lierman Avenue Trailhead to Railroad Path	SUP (OS)	UBMP	Penn Central RR	Main St	0.10	Urbana	Urbana		Med	Low
UR-MP-102	Marc Trail Path Extension	SUP (OS)	UBMP, GT	Deerfield Trails Path	Marc Trail	0.14	Urbana	Urbana		Med	Low
UR-MP-103	Mathews Path	SUP (OS)	CBP	Lorado Taft Path	Peabody Dr	0.12	UIUC	Urbana		Med	Low
UR-MP-104	Myra Ridge Path	SUP (OS)	UBMP, GT	Windsor Rd	South Ridge Park	0.21	Urbana	Urbana		Med	Low
UR-MP-105	Pfeffer Road Trailhead to Kickapoo Trail	SUP (OS)	UBMP	Railroad Path	Main St	0.08	Urbana	Urbana		Med	Low
UR-MP-106	Railroad Path	SUP (OS)	UBMP, GT	McCullough St	Coler Ave	0.17	Penn Central RR	Urbana		Med	Low
UR-MP-107	Railroad Path	SUP (OS)	UBMP, GT	Smith Rd	Broadway Ave	1.55	Penn Central RR	Urbana		Med	Low

## Active Choices

## Champaign County Greenways &amp; Trails Plan

## Future Conditions

Project ID	Name	Type	Plan	Terminus (NE)	Terminus (SW)	Distance	Jurisdiction	Municipality	Description	Priority	Time-frame
UR-MP-108	Railroad Path	SUP (OS)	UBMP, GT, University Ave	Lincoln Ave	Wright St	0.53	Penn Central RR	Urbana		Med	Low
UR-MP-109	Railroad Path	SUP (OS)	UBMP, GT, University Ave	Coler Ave	Lincoln Ave	0.20	Penn Central RR	Urbana	aka RTT Urbana West	Med	Low
UR-MP-110	Airport Road Sidepath	SUP (SP)	UBMP	Cunningham Ave (US 45)	Willow Rd	0.55	Urbana	Urbana		Med	Low
UR-MP-111	Airport Road Sidepath	SUP (SP)	UBMP, GT	W of Landis Farm Rd	Captiva St	0.16	Urbana	Urbana		Med	Low
UR-MP-112	Anthony Drive North Sidepath	SUP (SP)	UBMP	O'Brien Dr	Willow Rd	0.55	Urbana	Urbana		Med	Low
UR-MP-113	Country Club Road	SUP (SP)	UBMP	Cunningham Ave (US 45)	Urbana limits	0.25	Urbana	Urbana		Med	Low
UR-MP-114	FAR Path	SUP (SP)	CBP	Lincoln Ave	Virginia Dr	0.14	UIUC	Urbana	Along Florida Avenue, sign installation	Med	Low
UR-MP-115	Future Airport Road Sidepath	SUP (SP)	UBMP	Apple Tree Drive	Lincoln Ave	0.25	Urbana	Urbana		Med	Low
UR-MP-116	Future O'Brien Drive Sidepath	SUP (SP)	UBMP	O'Brien Dr	Willow Rd	0.11	Urbana	Urbana		Med	Low
UR-MP-117	Lincoln Avenue Sidepath	SUP (SP)	UBMP	Anthony Dr	Killarney St	0.32	IDOT	Urbana		Med	Low
UR-MP-118	Lincoln Avenue Sidepath	SUP (SP)	UBMP	Wilbur Rd	Anthony Dr	0.32	Urbana	Urbana		Med	Low
UR-MP-119	O'Brien Drive Sidepath	SUP (SP)	UBMP	Cunningham Ave (US 45)	W terminus	0.32	Urbana	Urbana		Med	Low
UR-MP-120	Philo Road Sidepath Extension	SUP (SP)	UBMP	S of Marc Trail	Urbana limits	0.20	Urbana	Urbana		Med	Low
UR-MP-121	Smith Road Sidepath	SUP (SP)	UBMP, GT	Kickapoo Rail-Trail	Main St	0.06	Urbana	Urbana		Med	Low
UR-MP-122	University Avenue Path	SUP (SP)	CBP, University Ave	Goodwin Ave	Mathews Ave	0.10	UIUC	Urbana		Med	Low

# Future Conditions

## Active Choices

Champaign County Greenways & Trails Plan

Project ID	Name	Type	Plan	Terminus (NE)	Terminus (SW)	Distance	Jurisdiction	Municipality	Description	Priority	Time-frame
UR-MP-123	US 45 West Side-path	SUP (SP)	UBMP	Kenyon Rd	Country Club Rd	0.19	IDOT	Urbana		Med	Low
UR-MP-124	Willow Road East Sidepath	SUP (SP)	UBMP	Airport Rd	Anthony Dr	0.47	Urbana	Urbana		Med	Low
UR-MP-125	Wright Street East Sidepath	SUP (SP)	UBMP, University Ave	Railroad	Park St	0.12	Urbana	Urbana		Med	Low
UR-MP-126	Mathews Path	UIUC Bike Path	CBP	Nevada St	Gregory Dr	0.12	UIUC	Urbana		Med	Low
UR-MP-127	Florida Avenue	Un-determined	CBP	Orchard St	Lincoln Ave	0.20	UIUC	Urbana		Med	Low
UR-MP-128	Washington Street	Bike Lanes	UBMP	Cottonwood Rd	E of High Cross Rd (IL 130)	0.91	County	Urbana (unincorporated)		Med	Low
UR-MP-129	Future Olympian Drive	Share the Road	UBMP, GT (path)	High Cross Rd	Cunningham Ave (US 45)	1.00	County	Urbana (unincorporated)		Med	Low
UR-MP-130	High Cross Road	Share the Road	UBMP	Future Olympian Dr	Airport Rd	1.22	County	Urbana (unincorporated)		Med	Low
UR-MP-131	Airport Road Side-path	SUP (SP)	UBMP, GT	Brownfield Rd	W of Landis Farm Rd	0.77	County	Urbana (unincorporated)		Med	Low
UR-MP-132	Airport Road Side-path	SUP (SP)	UBMP	Willow Rd	Apple Tree St	0.29	County	Urbana (unincorporated)		Med	Low
UR-MP-133	Airport Road Side-path	SUP (SP)	UBMP, GT	Captiva St	Cunningham Ave (US 45)	0.20	County	Urbana (unincorporated)		Med	Low
UR-MP-134	Country Club Road	SUP (SP)	UBMP	Urbana limits	Broadway Ave	0.19	County	Urbana (unincorporated)		Med	Low
UR-MP-135	Curtis Road Side-path	SUP (SP)	UBMP	High Cross Rd	Race St	2.50	County	Urbana (unincorporated)		Med	Low
UR-MP-136	Future Airport Road Sidepath	SUP (SP)	UBMP	Apple Tree Drive	Lincoln Ave	0.54	County	Urbana (unincorporated)		Med	Low
UR-MP-137	Future Olympian Drive Side-path	SUP (SP)	UBMP, CTP	US 45	Lincoln Ave	1.51	County	Urbana (unincorporated)		Med	Low
UR-MP-138	Future Olympian Drive Side-path	SUP (SP)	UBMP, CTP	Lincoln Ave	CNRR	0.63	County	Urbana (unincorporated)		Med	Low



## Active Choices

## Champaign County Greenways &amp; Trails Plan

## Future Conditions

Project ID	Name	Type	Plan	Terminus (NE)	Terminus (SW)	Distance	Jurisdiction	Municipality	Description	Priority	Time-frame
UR-MP-139	Lincoln Avenue Sidepath	SUP (SP)	UBMP	Olympian Dr (future)	Urbana limits N of Saline Ct	0.85	County	Urbana (unincorporated)		Med	Low
UR-MP-140	Lincoln Avenue Sidepath	SUP (SP)	UBMP	Urbana limits	Wilbur Rd	0.15	County	Urbana (unincorporated)		Med	Low
UR-MP-141	Lincoln Avenue Sidepath	SUP (SP)	UBMP	Urbana limits N of Saline Ct	Urbana limits S of Somer Dr	0.48	County	Urbana (unincorporated)		Med	Low
UR-MP-142	Perkins Road South Sidepath	SUP (SP)	UBMP	Perkins Road Park Site	Eastern Ave	0.06	County	Urbana (unincorporated)		Med	Low
UR-MP-143	Philo Road Sidepath Extension	SUP (SP)	UBMP	Urbana limits	Curtis Rd	0.24	County	Urbana (unincorporated)		Med	Low
UR-MP-144	US 45 East Sidepath	SUP (SP)	UBMP	Future Olympian Dr	Urbana limits	0.91	IDOT	Urbana (unincorporated)		Med	Low
UR-MP-145	St. Mary's Road	Bike Lanes	St. Mary's Road, CBP	Lincoln Ave	Wright St	0.50	UIUC	Urbana		Med	
UR-MP-146	Church Street	Bike Route	University Ave	Orchard St	W of Lincoln Ave	0.32	Urbana	Urbana		Med	
UR-MP-147	Church Street	Bike Route	University Ave	Harvey St	Goodwin Ave	0.12	Urbana	Urbana		Med	
UR-MP-148	College Court	Bike Route	CBP	Virginia Dr	Maryland Dr	0.04	UIUC	Urbana		Med	
UR-MP-149	Goodwin Avenue	Bike Route	CBP	Peabody Dr	Pennsylvania Ave	0.06	UIUC	Urbana		Med	
UR-MP-150	Gregory Drive Bike Route	Bike Route	CBP	Gregory Path	Dorner Dr	0.02	UIUC	Urbana		Med	
UR-MP-151	Maryland Drive	Bike Route	CBP	Pennsylvania Ave	College Ct	0.09	UIUC	Urbana		Med	
UR-MP-152	Virginia Drive	Bike Route	CBP	Pennsylvania Ave	Florida Ave	0.16	Urbana	Urbana		Med	
UR-MP-153	Eagle Ridge Trail	SUP (OS)	Urbana Comp Plan	Colorado Ave	Amber Ln	0.67	Urbana	Urbana		Med	
UR-MP-154	Illinois American Water Path	SUP (OS)	University Ave	W of Lincoln Ave	Harvey St	0.07	IAWC	Urbana	Church Street corridor	Med	
UR-MP-155	Library Path	SUP (OS)	CBP	Armory Path	Lorado Taft Path	0.18	UIUC	Urbana		Med	
UR-MP-156	St. Mary's Road Sidepath	SUP (SP)	St. Mary's Road	Lincoln Ave	Wright St	0.50	UIUC	Urbana		Med	

# Future Conditions

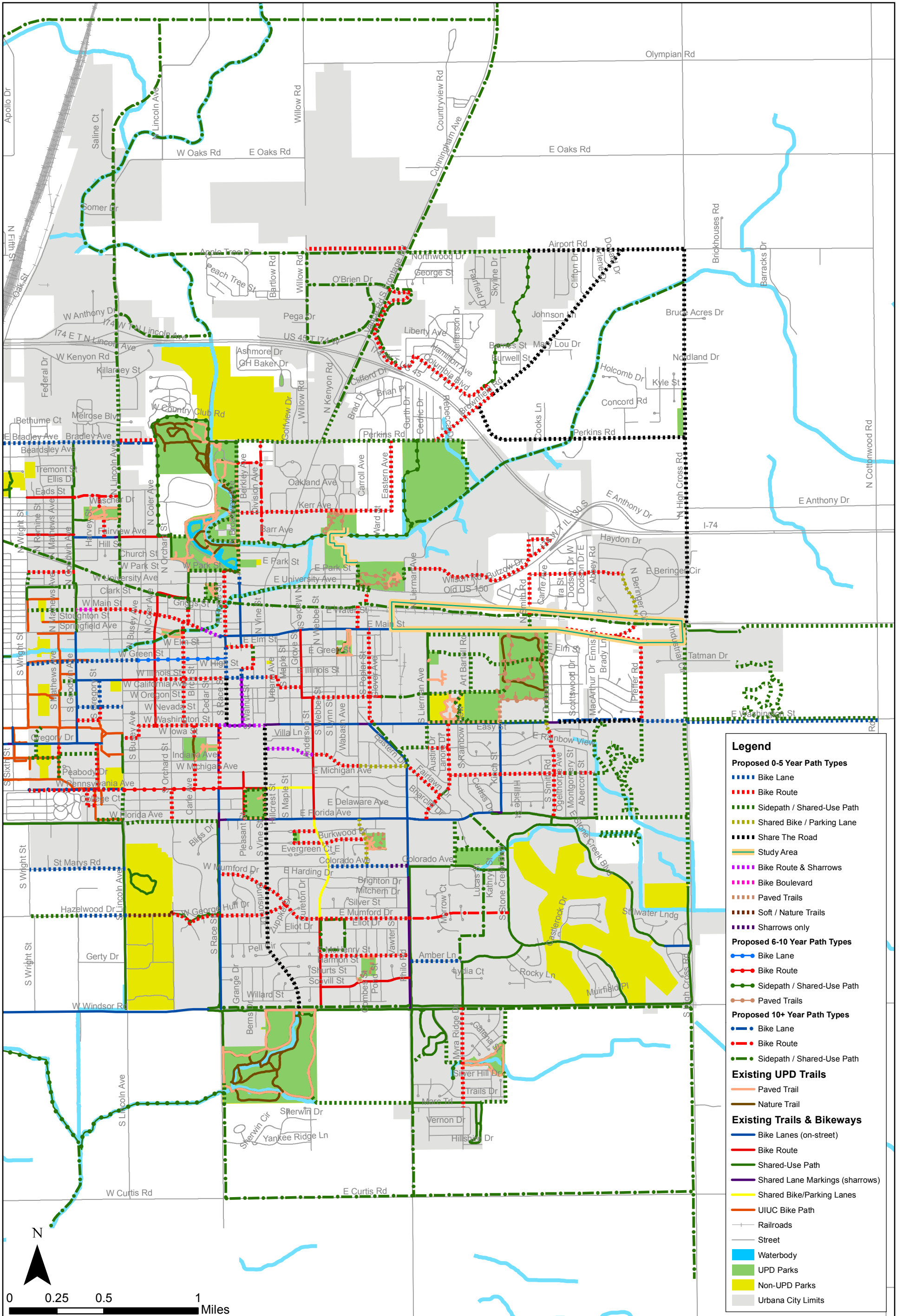
# Active Choices

Champaign County Greenways & Trails Plan

Project ID	Name	Type	Plan	Terminus (NE)	Terminus (SW)	Distance	Jurisdiction	Municipality	Description	Priority	Time-frame
UR-MP-157	Armory Bike Path	UIUC Bike Path	CBP	Mathews Ave	Wright St	0.17	UIUC	Urbana		Med	
UR-MP-158	Armory Bike Path	UIUC Bike Path	CBP	Gregory Path	Goodwin Ave	0.13	UIUC	Urbana		Med	
UR-MP-159	Armory Path	UIUC Bike Path	CBP	Goodwin Ave	Mathews Ave	0.18	UIUC	Urbana		Med	
UR-MP-160	Armory Path	UIUC Bike Path	CBP	Lincoln Ave	Gregory Path	0.14	UIUC	Urbana		Med	
UR-MP-161	Illinois Street Path	Un-determined	CBP	Goodwin Ave	Mathews Ave	0.09	UIUC	Urbana		Med	
UR-MP-162	Mathews Avenue	Un-determined	CBP	Green St	Nevada St	0.32	UIUC	Urbana		Med	
UR-MP-163	Mathews Avenue	Un-determined	CBP	Main St	Green St	0.28	Urbana	Urbana		Med	
UR-MP-164	Nevada Street	Un-determined	CBP	Goodwin Ave	Mathews Ave	0.09	UIUC	Urbana		Med	
UR-MP-165	Oregon Street	Un-determined	CBP	Goodwin Ave	Mathews Ave	0.09	UIUC	Urbana		Med	
UR-MP-166	Quad Path	Un-determined	CBP	Goodwin Ave	Mathews Ave	0.09	UIUC	Urbana		Med	
UR-MP-167	Quad Path	Un-determined	CBP	Mathews Ave	Wright St	0.17	UIUC	Urbana		Med	
UR-MP-168	Hazelwood Drive	Bike Lanes	CBP	Lincoln Ave	Goodwin Ave	0.25	UIUC	Urbana (unincorporated)		Med	
UR-MP-169	Airport Road Path	SUP (SP)	GT	Brownfield Rd	High Cross Rd	0.33	County	Urbana (unincorporated)		Med	
UR-MP-170	Hazelwood Drive	Un-determined	CBP	Goodwin Ave	Wright St	0.24	UIUC	Urbana (unincorporated)		Med	
UR-LP-01	Somerset Path	SUP (OS)	UBMP	Airport Rd	S of Airport Rd	0.63	Urbana	Urbana		Low	Med



# Recommended Bicycle Network



## Bike and Pedestrian Facilities in the Active Choices Greenways and Trails Plan Not Present in the Draft Urbana Bicycle Master Plan

Path	Termini	Greenways and Trails Plan Designation	Map #
Cunningham Ave.-Appletree Dr. Improvements (Proposed)	E: Cunningham Ave./W: Appletree Dr.	Share the Road Signs	Map 28; Map 29
Douglass Park Improvements (Proposed)	Around Douglass Park	Shared-Use Path	Map 28
Wright St. Improvements (Proposed)	N: Douglass Park/S: University Ave.	Bike Route	Map 28; Map 30
UIUC Improvements (Proposed)	E: Mathews Ave./W: Wright St. and Daniel St.	Undetermined	Map 28; Map 30
Mathews Ave. Improvements (Proposed)	N: Main St./S: Nevada St.	Undetermined	Map 28; Map 30
UIUC Improvements (Proposed)	E: Lincoln Ave./W: Wright St. and Armory Ave.	UIUC Improvements	Map 28; Map 30
Church St./Park St. Improvements (Proposed)	E: Broadway Ave./W: Goodwin Ave.	Bike Route and Shared-Use Path	Map 28; Map 30
Coler Ave. Improvements (Proposed)	N: Bradley Ave./S: Fairview Ave.	Bike Route	Map 28; Map 30
Bradley Ave./Country Club Rd./Perkins Rd./Brownfield Rd. Improvements (Proposed)	E: Columbia Blvd. and Brownfield Rd./W: Bradley Ave. and Coler Ave.	Share the Road Signs	Map 28; Map 29
Vine St. Improvements (Proposed)	N: Main St./S: Washington St.	Share the Road Signs	Map 28; Map 29; Map 30; Map 31
Hickory St. Park Path (Proposed)	N: Kerr Ave./S: Proposed AMBUCS Park Loop Path	Shared-Use Path	Map 28; Map 29; Map 30; Map 31
Future Olympian Dr. Improvements (Proposed)	E: High Cross Rd./W: Cunningham Ave.	Share the Road Signs	Map 29
High Cross Rd. Improvements (Proposed)	N: Future Olympian Dr./S: Airport Rd.	Share the Road Signs	Map 29
Airport Rd. Improvements (Proposed)	E: Near terminus of the Proposed Somerset Path/W: Cunningham Ave.; E: High Cross Rd./W: Terminus of the Proposed Somerset Path	Share the Road Signs; Shared-Use Path	Map 29
St. Mary's Rd. (Proposed)	E: Lincoln Ave./W: Fourth St.	Shared-Use Path	Map 30
Lincoln Ave. (Proposed)	N: Florida Ave./S: Windsor Rd.	Bike Lane	Map 30
Florida Ave. and Orchard St. at UIUC President's Home (Proposed)	Surrounding UIUC President's Home	Shared-Use Path and Undetermined	Map 30
Colorado Ave. (Proposed)	E: Philo Rd./W: Vine St.	Share the Road Signs	Map 30; Map 31
Mumford Dr. (Proposed)	E: Proposed Eagle Ridge Trail/W: Morrow Ct.	Shared-Use Path	Map 30; Map 31

**Alignment and Facility Designation Differences Between the Active Choices Greenways and Trails Plan and the Draft Urbana Bicycle Master Plan**

<b>Path</b>	<b>Termini</b>	<b>Greenways and Trails Plan Designation</b>	<b>Designation Difference with UBMP</b>	<b>Alignment Difference with UBMP</b>	<b>Map #</b>
Airport Rd.-Lincoln Ave. Improvements (Proposed)	E: Airport Rd./W: Proposed Lincoln Ave. Sidepath	Shared-Use Path		X	Map 28; Map 29
King Park Infrastructure (Existing)	Throughout King Park	Shared-Use Path	X	X	Map 28; Map 30
Crystal Lake Park/Busey Woods Infrastructure (Existing)	Inside and around Crystal Lake Park and Busey Woods	Shared-Use Path	X	X	Map 28; Map 29; Map 30
Washington St. Improvements (Proposed)	E: Vine St./W: Race St.	Bike Route	X		Map 28; Map 29; Map 30; Map 31
Broadway Ave. Improvements (Proposed)	N: Illinois St./S: Washington St.	Bike Lanes	X		Map 28; Map 29; Map 30; Map 31
AMBUCS Park Loop Path (Proposed)	Around AMBUCS Park	Shared-Use Path		X	Map 28; Map 29; Map 30; Map 31
AMBUCS-Webber Park Path (Proposed)	N: Perkins Rd./S: AMBUCS Park	Shared-Use Path		X	Map 28; Map 29; Map 30; Map 31
Webber Park Improvements (Proposed)	Inside Webber Park	Shared-Use Path		X	Map 28; Map 29; Map 30; Map 31
Victory Park Infrastructure (Existing)	Inside Victory Park	Shared-Use Path	X	X	Map 28; Map 29; Map 30; Map 31
Somerset Path (Proposed)	N: Airport Rd./ S: Immediately north of Barnes St.	Shared-Use Path		X	Map 29
Beringer Cir. Improvements (Proposed)	N: Slayback St./S: University Ave.	Bike Route	X		Map 29; Map 31
Kickapoo Rail Trail	E: Outside the Map/W: High Cross Rd.	Shared-Use Path		X	Map 29; Map 31
Prairie Park and Weaver Park	Inside and around Prairie Park and Weaver Park	Shared-Use Path	X	X	Map 28; Map 29; Map 30; Map 31
St. Mary's Rd. (Proposed)	E: Lincoln Ave./W: West of First St.	Bike Lane		X	Map 30
Hazelwood Dr. (Proposed)	E: Goodwin Ave./W: Fourth St.	Undetermined	X	X	Map 30
Crestview Park (Existing and Proposed)	Inside Crestview Park	Shared-Use Paths	X	X	Map 30; Map 31
Meadowbrook Park (Existing and Proposed)	Inside Meadowbrook Park	Shared-Use Paths	X	X	Map 30; Map 31
Pomology Path (Proposed)	E: Philo Rd./W: Meadowbrook Park	Shared-Use Path		X	Map 30; Map 31
East of Philo Road (Proposed)	N: Colorado Ave./S: Amber Ln.	Shared-Use Path		X	Map 30; Map 31

**MINUTES OF A REGULAR MEETING**

**URBANA PLAN COMMISSION**

**DRAFT**

**DATE:** November 6, 2014

**TIME:** 7:30 P.M.

**PLACE:** Urbana City Building  
Council Chambers  
400 South Vine Street  
Urbana, IL 61801

---

**MEMBER PRESENT:** Corey Buttry, Maria Byndom, Andrew Fell, Tyler Fitch, Lew Hopkins, Bernadine Stake, David Trail

**MEMBERS EXCUSED:** Dannie Otto

**STAFF PRESENT:** Jeff Engstrom, Interim Planning Manager; Matt Rejc, Planning Intern; Teri Andel, Planning Administrative Assistant

**OTHERS PRESENT:** Caitlin Lill, Carol McKusick

---

**CONTINUED PUBLIC HEARINGS**

**Plan Case No. 2223-CP-14 – A request to adopt the Active Choices: Champaign County Greenways & Trails Plan as an amendment to the 2005 Urbana Comprehensive Plan.**

Chair Fitch re-opened this case. Jeff Engstrom, Interim Planning Manager, presented a brief update of the proposed plan. He reviewed the concerns previously expressed by the Plan Commission at the October 9, 2014 meeting, which were as follows: 1) Inconsistencies between the maps in the proposed Greenways and Trail Plan and the map in the upcoming Bicycle Master Plan and 2) inconsistency with the Comprehensive Plan Mobility Map. City staff produced a list of these inconsistencies, which are shown in Exhibit D of the written staff report dated October 31, 2014. The only inconsistency they found with the Mobility Map is regarding the expansion of Olympian Drive east of US-45.

Staff has also considered the language that would be most appropriate in adopting the proposed Active Choices Plan. He read the options of the Plan Commission and presented staff's recommendation for Option B.

Chair Fitch asked if the Plan Commission had any questions for City staff.

Mr. Trail asked what it would mean to adopt as an agency plan. Mr. Engstrom replied that the language would be to accept it rather than adopt it into the Comprehensive Plan.

Mr. Trail wondered where a concern member of the public would go to find to get a concise description of what the relationship of all the plans are and how the concerned citizen would interpret if they were interested in finding out what each plans says about their neighborhood. Mr. Engstrom stated that there is not a concise list of all of the plans. The City has accepted some as agency plans and adopted some into the City's 2005 Comprehensive Plan. This is something that City staff could work on. Mr. Trail responded that he believed much of the Plan Commission's concern would be alleviated if there was a quick and easy way to see what the relevant plans are and what the City of Urbana thinks of them. Mr. Engstrom pointed out that there is a list of City plans that are available on the City's website; however, the external plans are not available in final format.

There were no further questions. Chair Fitch opened the hearing up for public input from the audience. There was none, so he closed the public input portion of the hearing. He, then, opened the case up for Plan Commission discussion and/or motion(s).

Mr. Hopkins moved that the Plan Commission forward Plan Case No. 2223-CP-14 to the City Council with a recommendation using Option B – to adopt the Active Choices Plan as an amendment to the Comprehensive Plan, with the general stipulation that any inconsistencies between the Active Choices and other city plans shall not be adopted and the City's existing and future plans shall prevail. Mr. Buttry seconded the motion.

Mr. Hopkins commented that we know we need to create a way of accessing this information on the City's website. This would be a priority when we get fully staffed. Under the current circumstances, he believed that Option B would be the right choice; however, he felt that the City should change the circumstances so we have a better way of doing this.

Roll call was as taken and was as follows:

Ms. Byndom	-	Yes	Mr. Fell	-	Yes
Mr. Fitch	-	Yes	Mr. Hopkins	-	Yes
Ms. Stake	-	Yes	Mr. Trail	-	Yes
Mr. Buttry	-	Yes			

The motion was passed by unanimous vote.

Mr. Engstrom stated that this case would be forwarded to the City Council on November 17, 2014.